

Revolutionising the car rental experience in KSA

Lumi brings new energy, innovation and dynamism to our customers. Through cutting-edge technology and personalised services, our renewed drive delivers greater value and exceeded expectations.

Accelerating the digitisation of the car rental business, Lumi offers seamless online and app booking experiences with ambitious plans for contactless curbside vehicle pick-up solutions and more. With a branch network of over 25 locations, including presence across 9 airports, it offers a wide reach across key Saudi regions.

Powered by **Seera Group's** local expertise, Lumi drives value for consumers and travellers with intuitive and smart vehicle rental services, leasing solutions for corporate and government clients, as well as limousine services and customised transportation packages for events and occasions of various magnitudes.

USPs



Speedy and convenient bookings

Intuitive & seamless booking experiences on our state-of-the art website, app and digital-first branch network of 25+ locations, including 9 airports.



New and well-maintained fleet

With a young fleet of over 14,000 vehicles that are no older than 2 years, we are well-equipped to meet all types of needs.



Safety first

We follow the highest standards of health, safety & sanitisation measures and thoroughly clean and disinfect all vehicles before handing them over.



24/7 roadside assistance

Our customers get peace of mind with help available round the clock from our knowledgeable and efficient support team.

USPs



Value for money

We offer access to great cars and superior customer service at competitive prices to drive more value.



Focus on quality

We're one of only two ISO 9001-2015 certified car rental companies in the Kingdom and our vehicles are routinely serviced and thoroughly inspected for maintenance.



Easy pick-up/drop-off

Along with quick and hassle-free pick-up and drop-off solutions at our location, we also offer the option to have the car delivered to customers for added convenience.

Value added services - Mobile workshop

Quick and hassle-free service at your doorstep

Lumi's mobile workshop is a convenient solution to offer oil change services at the customer's preferred location. Instead of having to drive to a service station or garage, customers can schedule an appointment with Lumi from the comfort of their home and get their vehicle serviced at their location by our mobile servicing team.



State-of-the art, digital-first branches

Lumi has a strong branch network of 25+ locations, including 9 airports spread across the Kingdom



State-of-the art, digital-first branches

Advanced solutions

With cutting-edge design & technology, time-saving processes, highly trained advisors for consultation and convenient payment methods, our branches across the Kingdom enable customers to have a hassle-free, quick and easy booking experience. From the digitisation of the entire operations at airport counters to Tamm service integration to speed up government registration for customers looking to rent a vehicle, our various locations offer access to a wide range of solutions. Smooth pick-up and drop-off services offer an additional layer of convenience integral to superior car rental experiences.



State-of-the art, digital-first branches

Safety measures

As part of Seera Group's larger initiative, 'Seera Safe', Lumi has launched various safety initiatives, reassuring customers of the highest standards of health and safety followed. Enhanced cleaning procedures include a thorough sanitisation of all vehicles before rental with utmost attention paid to high touchpoint areas. Temperature checks of staff and visitors have been activated at all the airport counters. Social distancing measures are practised, and digital processes and payments reduce physical contact.



Fueling the digital revolution of car rentals

Headed full speed towards digitisation, Lumi is gearing up with innovative technology to boost the car rental journey through smarter and more intuitive solutions such as 24/7, seamless car rental pick-up and drop-off experiences, contactless curbside vehicle pick-up, and other cutting-edge services.

A world of opportunity awaits!



Corporate leasing - B2B

Lumi offers cost-efficient long-term leasing solutions for corporate & government clients. With complete transportation solutions including vehicle leasing, account management support, facilitation of maintenance and servicing and more, we are true fleet partners for our clients.



Corporate leasing - B2B

- Quick leasing process
- Competitive rates with flexible terms
- Great quality and clean vehicles
- Young fleet (80% under 12 months old)
- Superior customer and after-sales service
- A detailed crisis management system to cover incidents and accidents
- 24/7 roadside assistance
- Mobile and on-site maintenance solutions
- Vehicle replacement in case of accident or breakdown
- Access to special deals
- Dedicated lease portal to manage vehicles



Corporate leasing

We take care of all the hassle of owning a vehicle, from maintenance to repairs



Self-managed vehicles



Chauffeur-driven fleet



Combination of both

- **Enhance productivity**

Staff efficiency with loan vehicles
Reduced administrative troubles

- **Economy of scale & convenience**

Choice of vehicle types, makes and models
A one-stop shop for everything

- **Financial benefits**

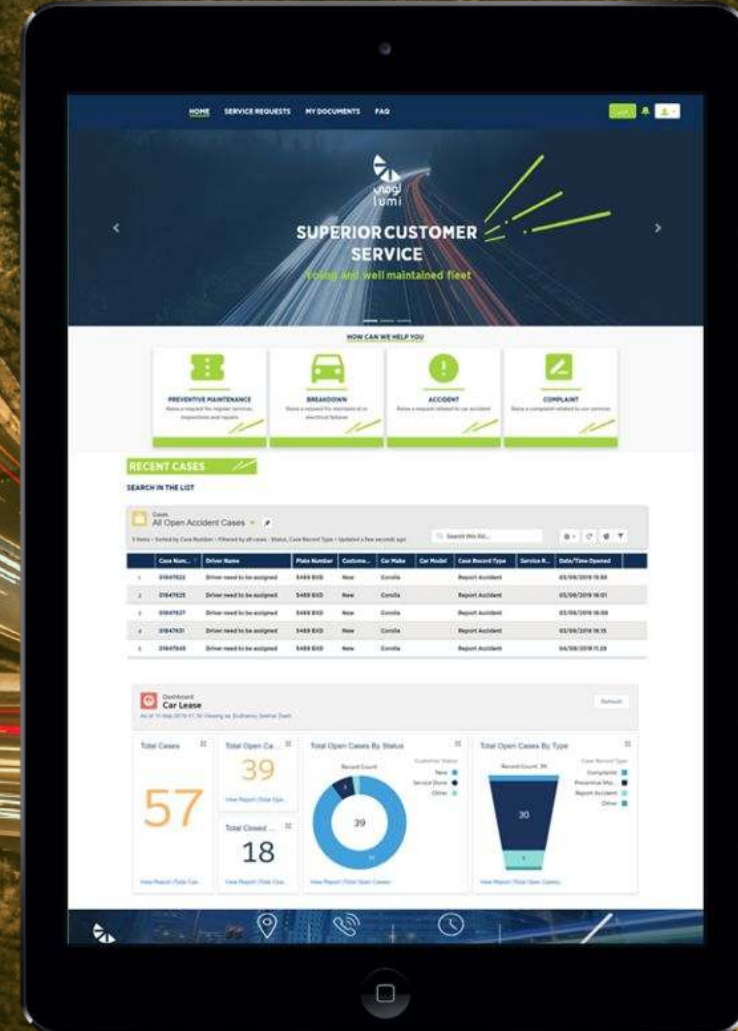
Off balance sheet funding
Fixed monthly costs
Reduced financial risks

Corporate leasing - Value added services

Lumi's lease portal

A dedicated portal for corporate clients to manage their vehicles and maintenance needs with ease.

Our clients save time and resources with a one-stop-shop where they can easily submit vehicle maintenance and servicing requests, get full visibility and notifications across every stage, and timely communication. It also allows them to keep track of their vehicles and monitor progress with data-driven solutions.



Let's get you moving

We're ready to accelerate car rental and leasing experiences at full throttle!

 Learn more: www.lumirental.com

 Email us: info@lumirental.com

 Call us: **+966 920028428**

 Visit our branches

