



Eng.Sarah Al-Hassan

Eng. Sarah Hassan Al-Hassan
Interior design

Miss .Sarah is recently graduated with in Interior Design from the Princess Nora bint Abdul Rahman University. Creative thinker who designs visually appealing ,exciting and inspiring projects. Seeking a job in a professional and Interior Design firm where I have a chance to apply my skills and acquire knowledge.

Professional skills

Auto CAD



3D Max



Adobe Photoshop



Adobe Illustrator



Coreidae



Contents





- *Office Design*
- *Commercial Design*
- *Hospitality Design*
- *Furniture Design*



Offies Design





Almosfer

Development and design of Al mosafers offices, which is a design for the office plan where the movement of the place was inspired by the company logo to choose colors, as well as offices that were employed to meet their needs and can be used in several areas, giving privacy in some offices the most important point for that.



Furniture plan

Section

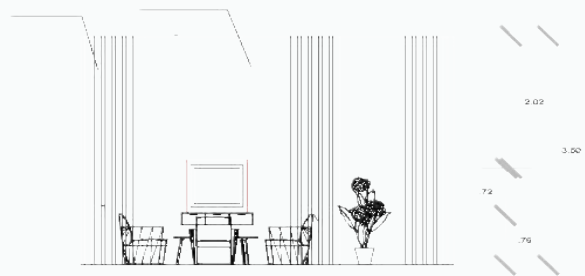
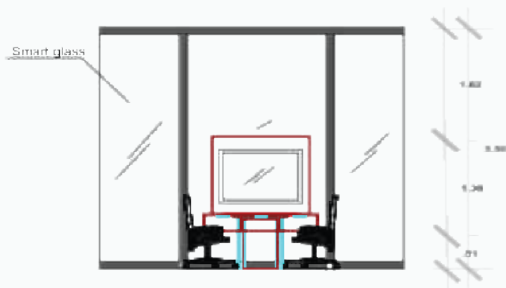
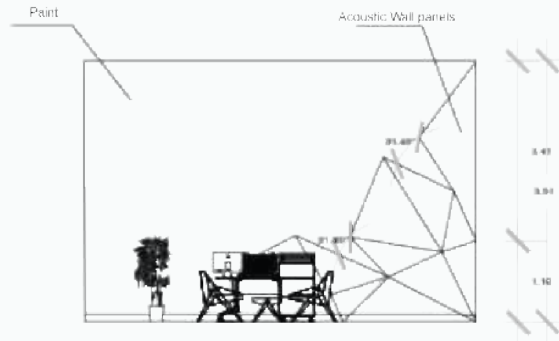
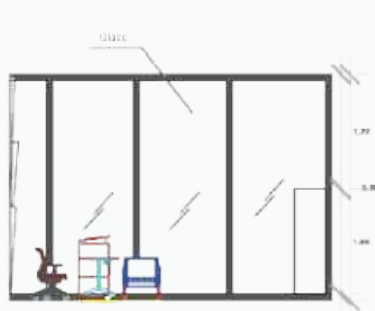


section A-A1



section B-B1

Elevation



3D shot



3D shot



3D shot



3D shot





Commercial Design

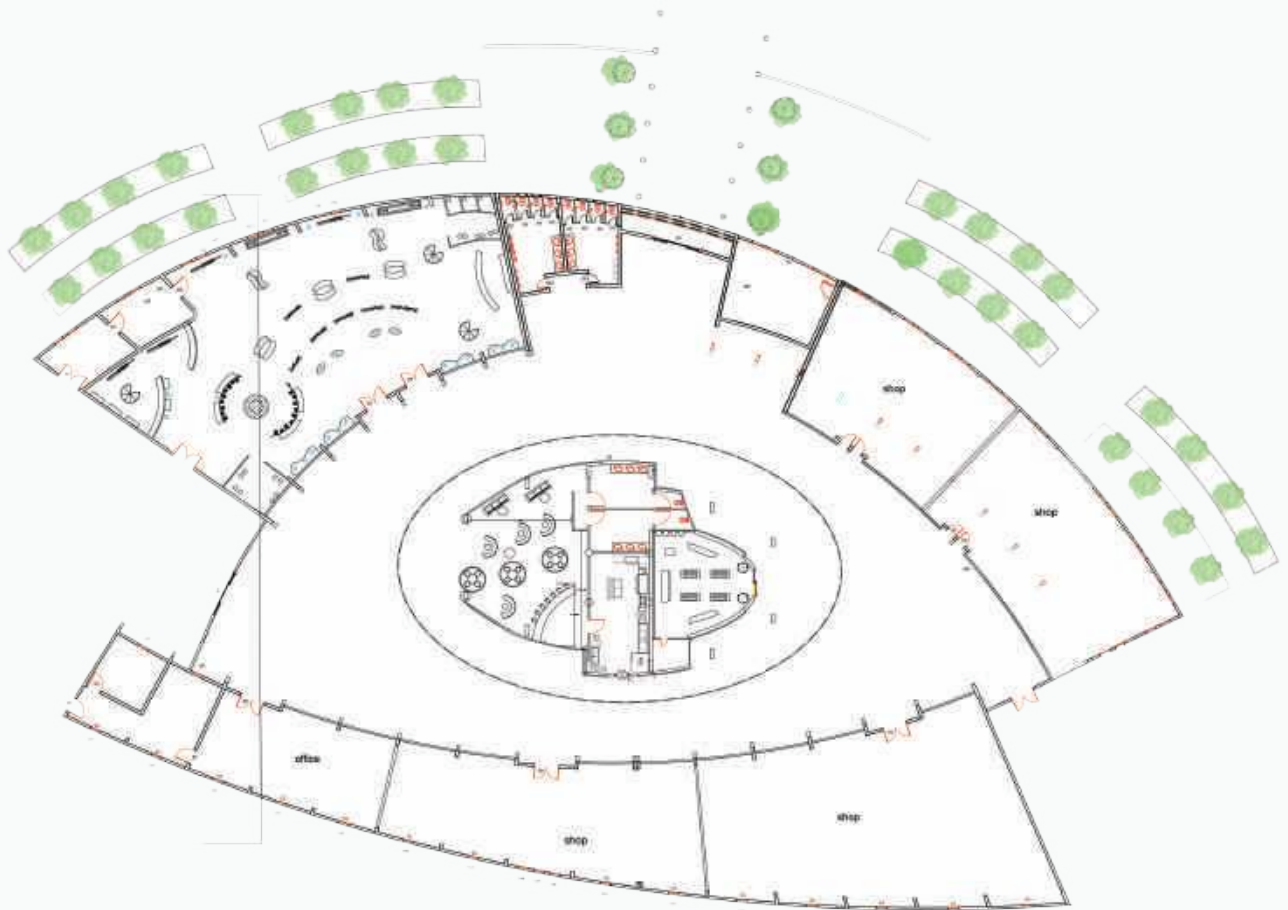


Boozt.com

Concept

Eye Vision is a personal experience, and everyone sees the world with their own unique perspective. Just as eyes are not one vision all, eye comes in a range of shapes, sizes, and styles. The experienced eye view assist you in identifying the ideal frames to enhance both your vision and your natural beauty





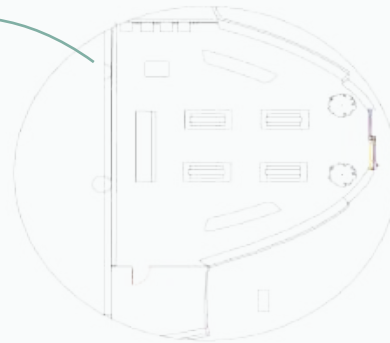
Furniture plan



Enlarged Floor Plan "A"

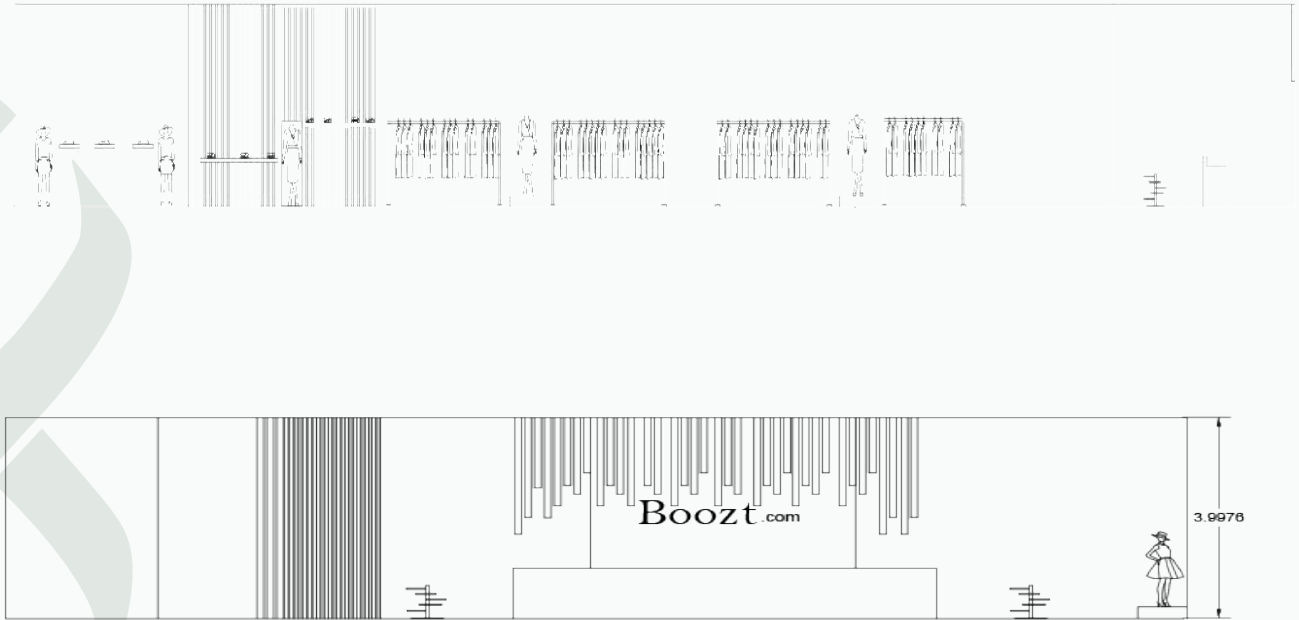


Enlarged FLOOR PLAN "B"

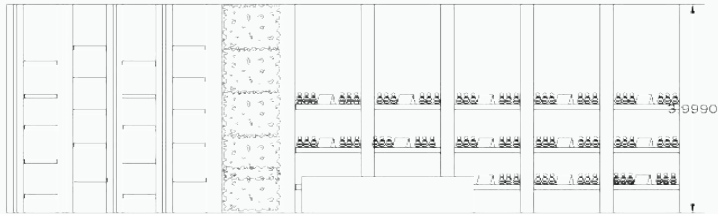


Enlarged FLOOR PLAN "C"

Section



Elevation



3D shot





3D shot







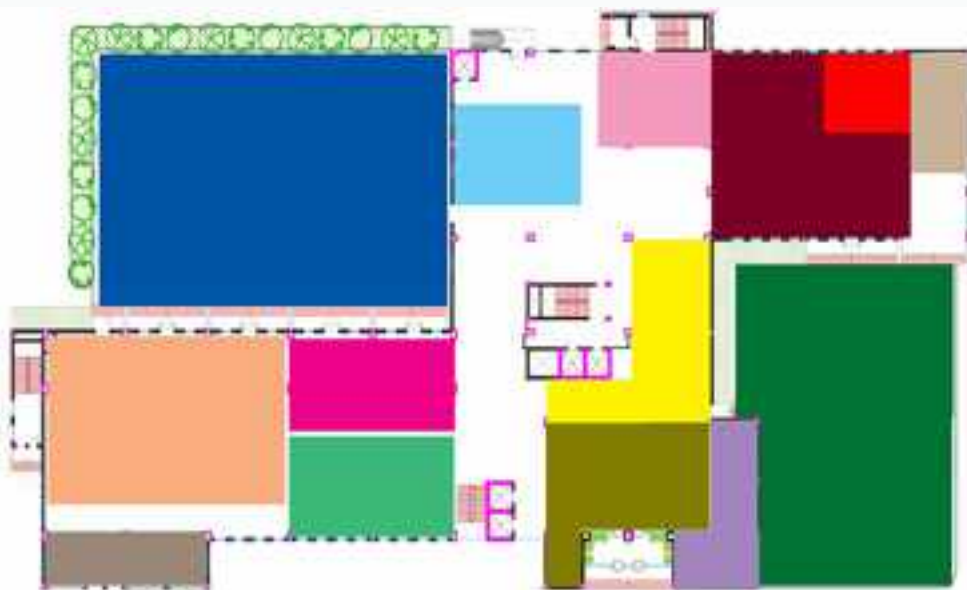
Hospitality Design





*Concept Design:
Inspired by the design of the
Andalusian architecture and the
preservation of the rural
character of the design with
the development of furniture
and the creation of a
complementary
environment to the external
environment.*

Style: Rustic



POOL	OFFICE AREA
GYMNASIUM	OFFICE
OFFICE	OFFICE
OFFICE	OFFICE
LOBBY	HALL

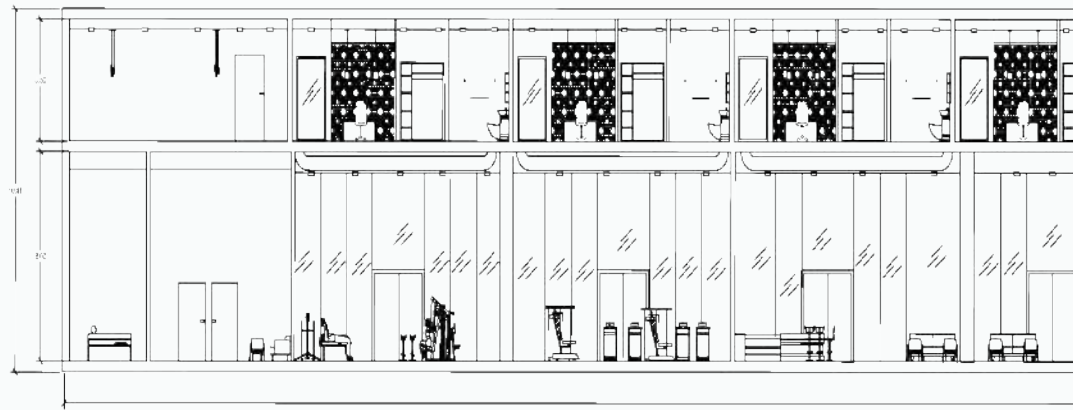


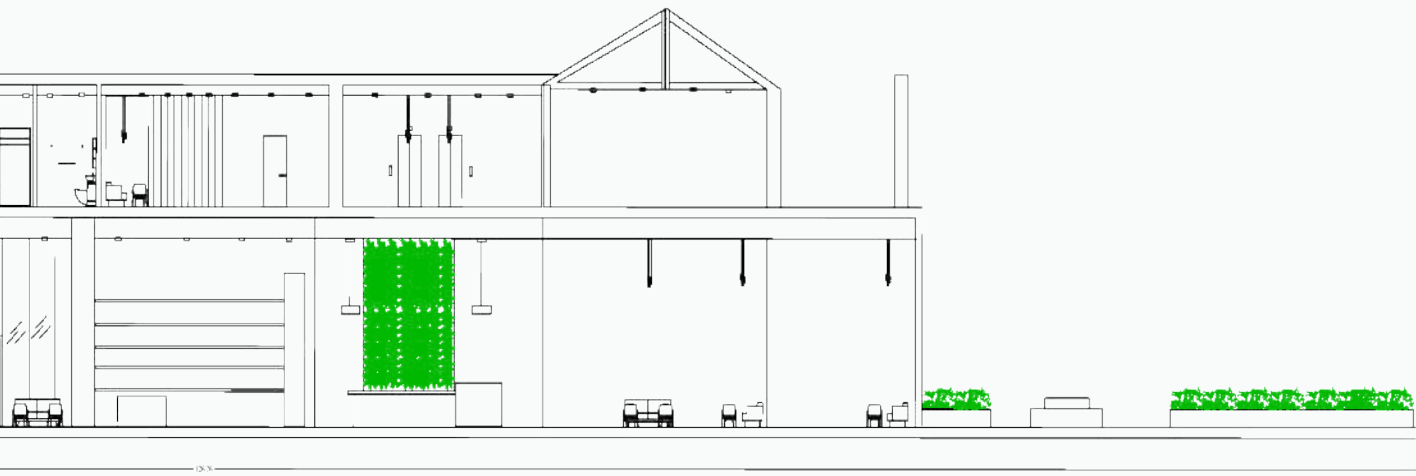
Ground floor



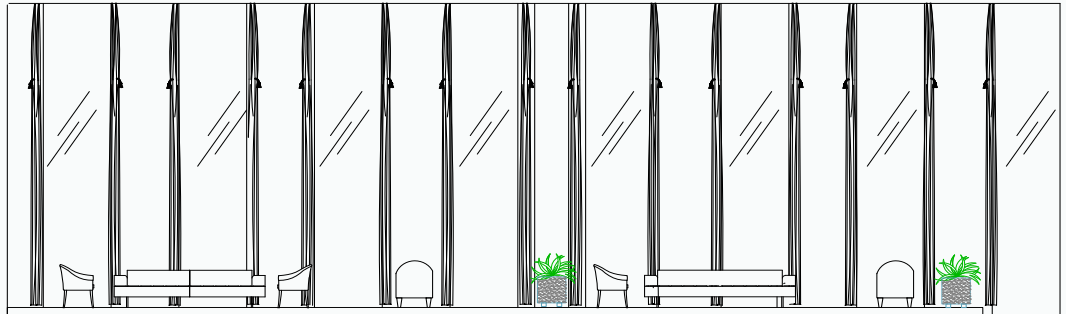
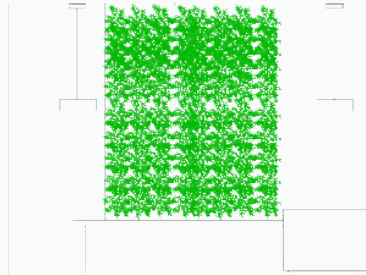
Farest floor

Section

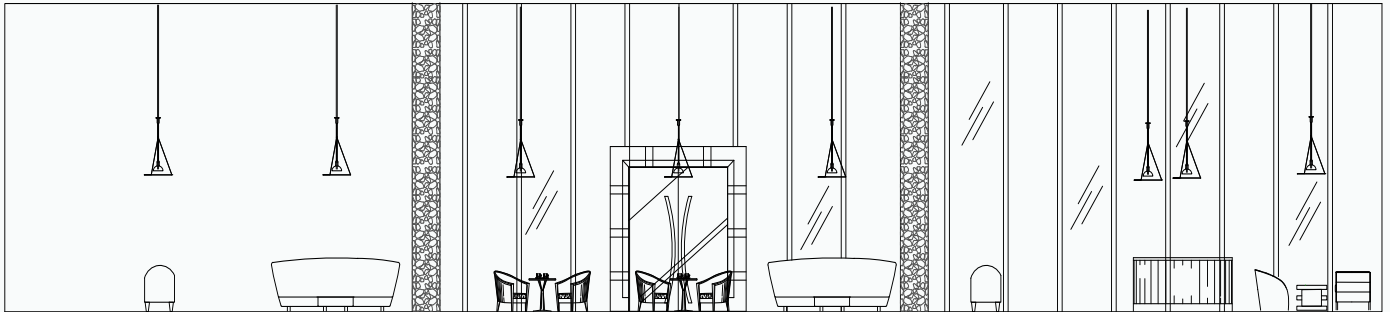


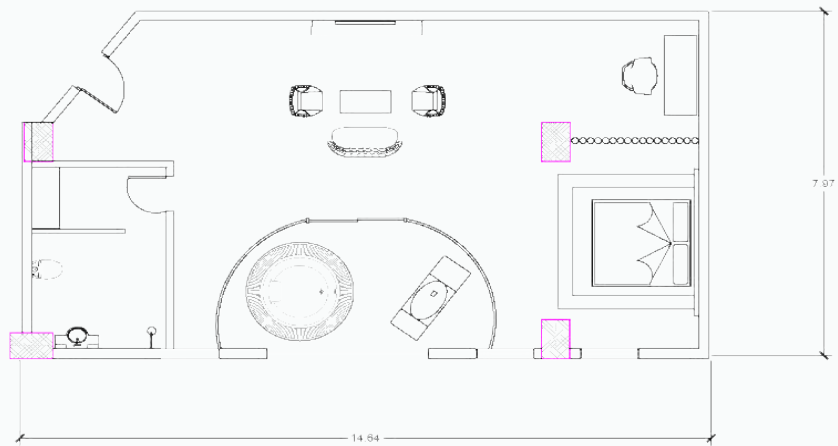


Elevation

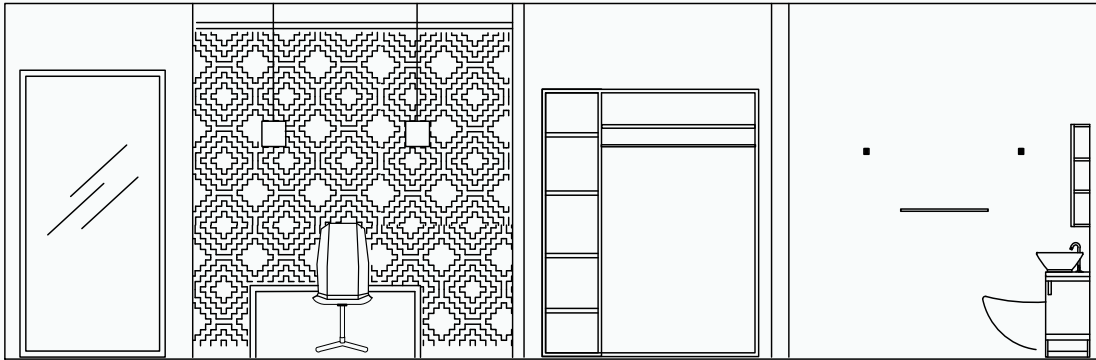


Elevation





Elevation





Senior Project



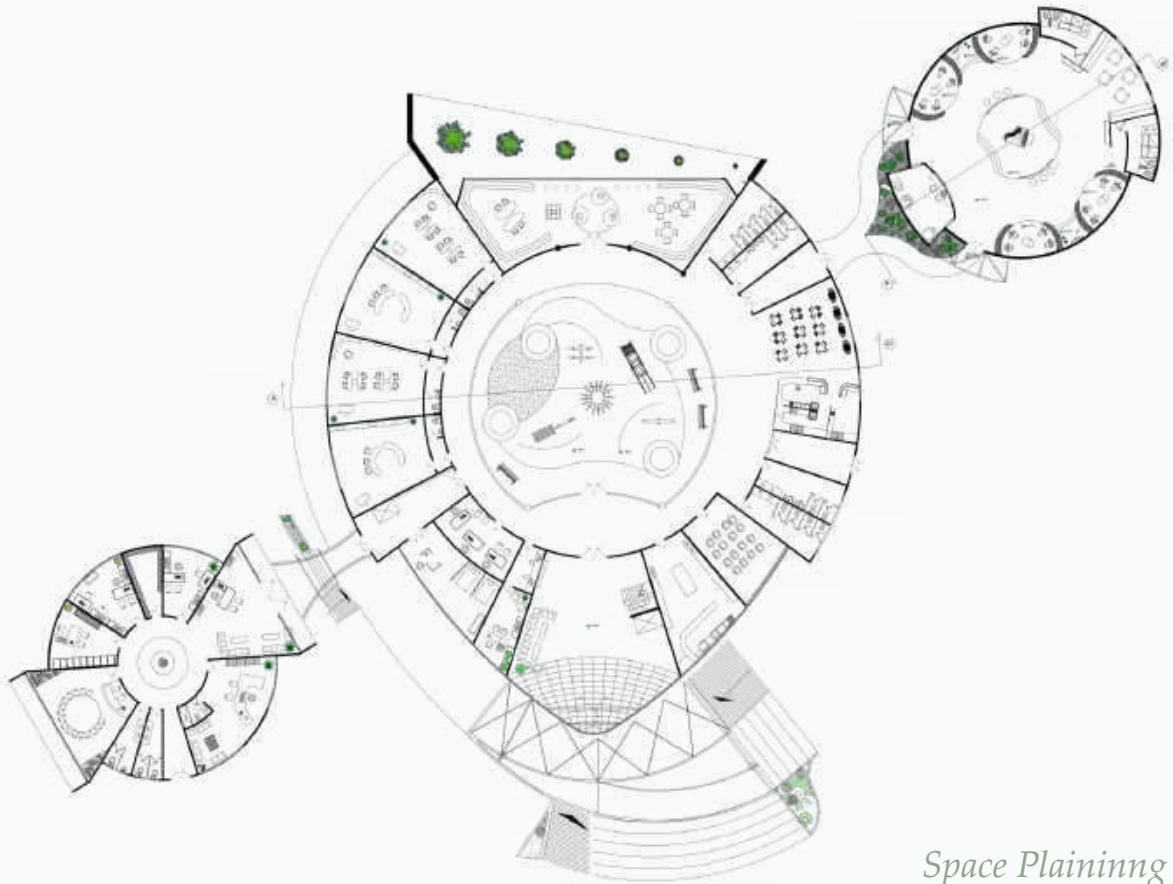


Educatuin and Recreation Canter for children with cacer

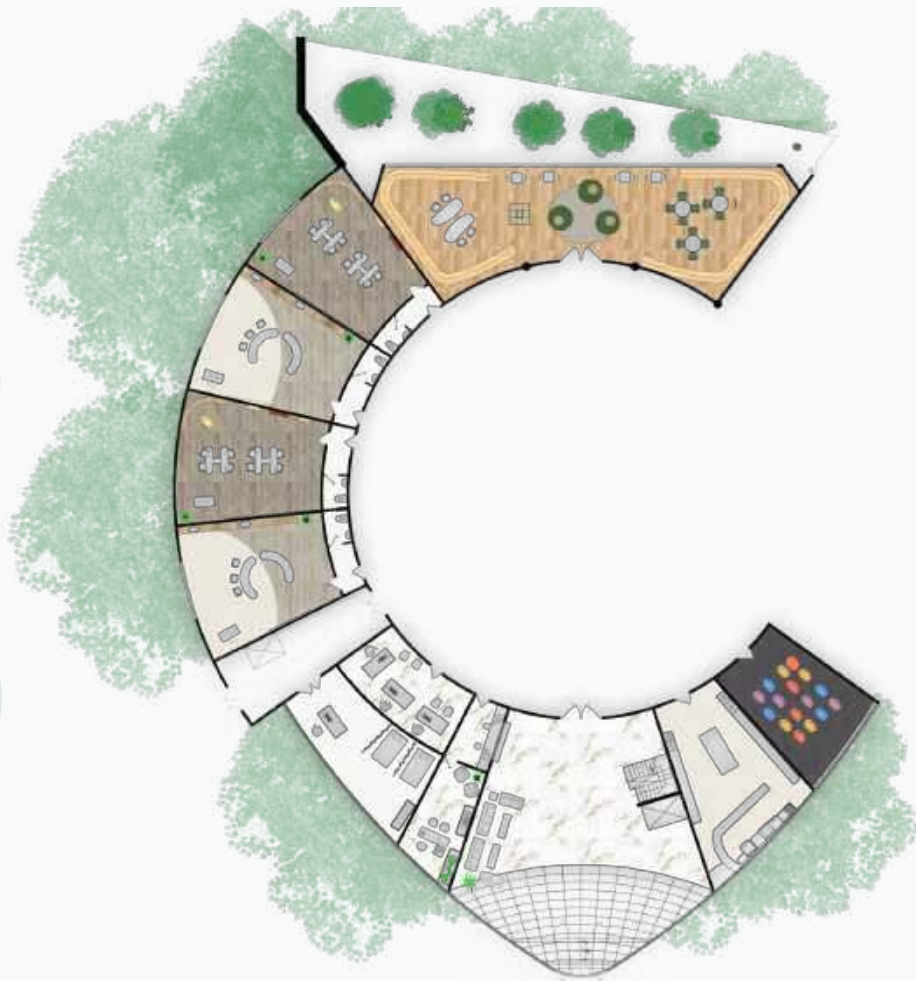
Concept:

When people think about cancer patients especially kids, they have an initial thought that they should not blend in with the environment or the community, but in fact that is what cancer patients need, they have to be a part of the community to help them fight the disease.

There's a plant that is named "Silybum marianum", this plant will be applied firstly to refresh the place with plants, and secondly to arrange the furniture in a fun way inspired by the plant, also finally extracting the main colors from them as well.

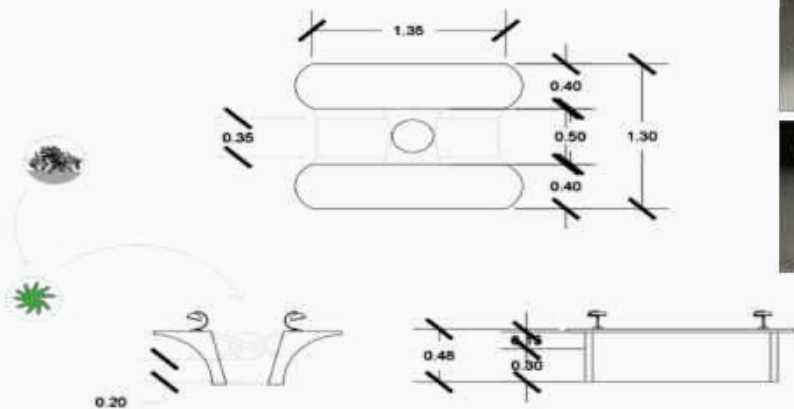
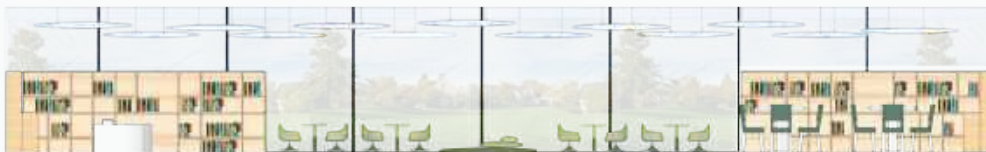


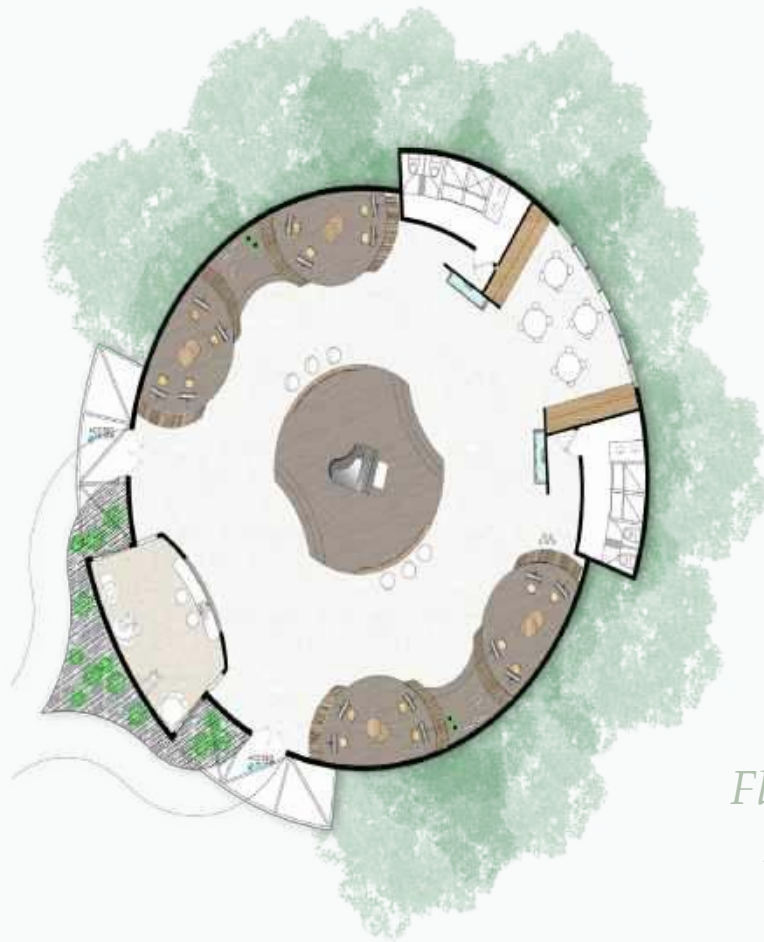
Space Plaininng



*Floor plan
Zone 1*

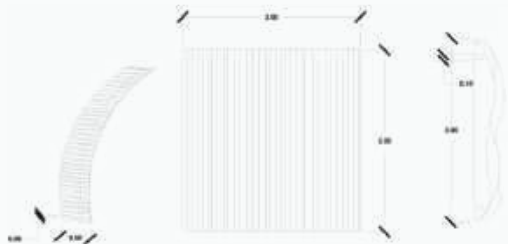
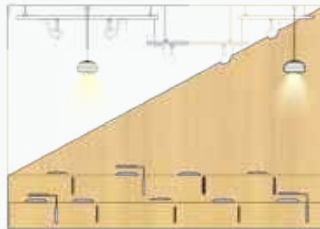
Elevation



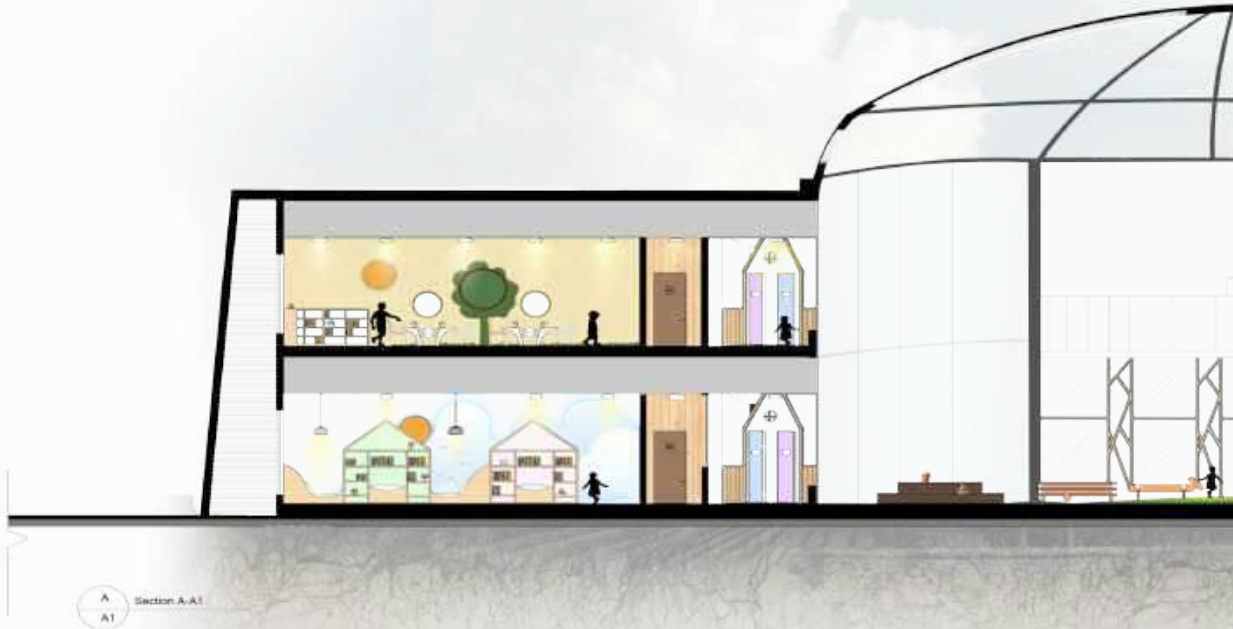


*Floor plan
Zone 2*

Elevation



Section





Section





3D shot



3D shot



3D shot



3D shot



3D shot



3D shot





Furniture Design



FURNISHING MOD

Design a coffee table

Concept

the design concept is the hurricane and its rotary motion, combined with the design style of the greek ionic column in terms of pressure and strength of endurance



3D shot

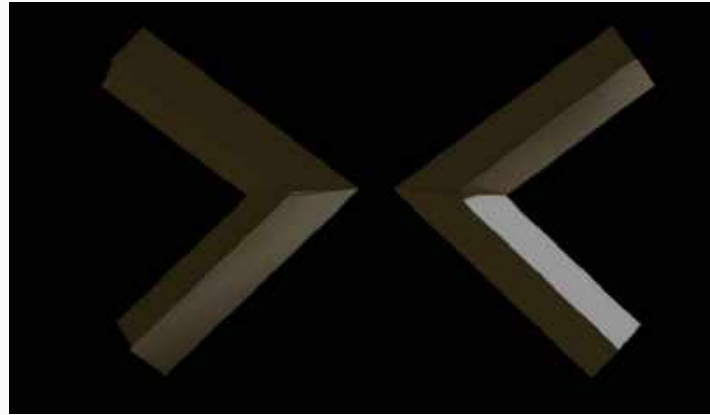


Lighting Design

consept :

Cuneiform or Sumero-Akkadian cuneiform, one of the earliest systems of writing, was invented by the Sumerians. It is distinguished by its wedge-shaped marks on clay tablets, made by means of a blunt reed for a stylus. The name cuneiform itself simply means "wedge shaped."

3D shot



Section





Implementation

