

# DISCOVER OUR HOSPITAL & MEDICAL PROFESSIONALS

## 2026

Our hospital, with our dedicated team of consultants and staff, provides the best comprehensive medical care for your well-being and treatment, making this a place of healing and comfort for you.

## OUR LOCATION

Lot 8836 (Part of Lot 6183 & 6186), Block 11, Kuala Baram  
Land District, Off Tudan Kuala Baram Link Road, Bandar  
Baru Permy Jaya, 98107 Miri, Sarawak

Latitude: 4.448041  
Longitude: 114.034164

## CONNECT WITH US



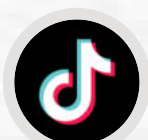
[www.kpjmiri.com](http://www.kpjmiri.com)



KPJ Miri Specialist Hospital



[kpjmiri\\_official](https://www.instagram.com/kpjmiri_official)



[kpjmiriofficial](https://www.tiktok.com/kpjmiriofficial)

**We're here to help, reach out with  
any inquiries:**



085 649 999  
General / Emergency Line



## ABOUT US

KPJ Miri Specialist Hospital is the third KPJ hospital in Sarawak, established by Malaysia's leading private healthcare provider, KPJ Healthcare Berhad.

A joint venture between KPJ Healthcare Berhad and Naim Land Sdn. Bhd., this modern seven-storey hospital is strategically located in Bandar Baru Permyjaya, a vibrant new township in the northern part of Miri City. Surrounded by extensive residential areas, industrial zones, commercial hubs, and the oil and gas sector, KPJ Miri is easily accessible.

The hospital is just a 45-minute drive from the Brunei border, 15 minutes from Miri's city center, and conveniently connected to the newly completed PAN Borneo Highway. Notably, KPJ Miri is the closest private hospital to Curtin University Malaysia, situated just 17 minutes away from the campus. This proximity provides unmatched convenience.

## OUR CORE VALUES

**Committed | Accountable | Respectful | Excellent**



### COMMITTED

*Komited*

Dedicated to achieve our shared goals and vision.

*Berdedikasi untuk mencapai matlamat dan visi bersama.*



### ACCOUNTABLE

*Bertanggungjawab*

Ownership & integrity in actions.

*Bertanggungjawab & berintegriti dalam segala tindakan.*



### RESPECTFUL

*Hormat-menghormati*

Valuing diversity and dignity with courtesy.

*Berbudi bahasa dalam menghargai kepelbagaian dan maruah.*



### EXCELLENT

*Cemerlang*

Delivering exceptional quality and performance.

*Memberikan kualiti dan prestasi yang luar biasa.*



# MEET OUR RESIDENT CONSULTANTS

## OBSTETRICS & GYNAECOLOGY



**DR. AIDA ESA**  
Resident Consultant  
Obstetrician & Gynaecologist  
MBBS (MALAYA), MOG (MALAYSIA)  
MMC NO: 33259 | NSR NO: 124832



**DR. WONG LEE LEONG**  
Resident Consultant  
Obstetrician & Gynaecologist  
Laparoscopic Surgeon  
MD (USM), MRCOG (UK), FACOG (USA),  
F.MAS (INDIA)  
MMC NO: 67874 | NSR NO: 141550

## OPHTHALMOLOGY



**DR. MATTHEW TONG JONG HAW**  
Resident Consultant  
Ophthalmologist  
MD (UMS), MMED (USM)  
MMC NO: 51057 | NSR NO: 138673

## EAR, NOSE, THROAT & NECK SURGERY



**DR. SELVA KUMAR**  
Resident Consultant Ear, Nose,  
Throat & Neck Surgeon  
MBBS (MAL), FRCS (IREL), FRCS (GLAS),  
MS ORL (MAL)  
MMC NO: 30411 | NSR NO: 125783

## INTERNAL MEDICINE



**DR. LAU KENT TER**  
Resident Consultant  
Internal Medicine  
MBBS (AIMST), HKCPIE (HK)-MRCP (UK),  
MRCPs (GLASG), CMIA (NIO SH), AM (MAL),  
FRCP (UK), FRCP (IRELAND)  
MMC NO: 52435 | NSR NO: 136198

## ANAESTHESIOLOGY



**DR. ARUN ILANTHIRAYAN**  
Resident Consultant  
Anaesthesiologist  
MBBS (MALAYA),  
M.MED ANAESTHESIOLOGIST (UM)  
MMC NO: 42237 | NSR NO: 128926

## PAEDIATRICS



**DR. WONG TIONG HIEN**  
Resident Consultant Paediatrician  
MD (USM), MRCPCH (UK)  
MMC NO: 39508 | NSR NO: 131509



**DR. PHILIP LING HUNG TOH**  
Resident Consultant Paediatrician  
MBBS (AIMST), MRCPCH (UK),  
POSTGRAD DIP PAED NUTRITION (BOSTON),  
EARLY NUTRITION SPECIALIST (LMU),  
DIPLOMA DERMATOLOGY (RCPI)  
MMC NO: 67167 | NSR NO: 142034

## OPHTHALMOLOGY & VITREORETINAL SURGERY



**DR. ALISA VICTORIA KOH**  
Resident Consultant Ophthalmologist  
& Vitreoretinal Surgeon  
MD (USM), MMED (OPHTAL) (USM),  
CCFT VITREORETINA, MINISTRY OF HEALTH  
MALAYSIA, FELLOWSHIP IN RETINA (AUS)  
MMC NO: 44138 | NSR NO: 134136

## GENERAL & LAPAROSCOPIC SURGERY



**DR. PUI WEI CHIENG**  
Resident Consultant  
General & Laparoscopic Surgeon  
MBBS (IMU), MRCS (ED),  
DRGENSURG (UKM), CMIA (NIO SH)  
MMC NO: 47080 | NSR NO: 136490

## ORTHOPAEDIC & SPINE SURGERY



**DR. DENNY CLARE**  
Resident Consultant  
Orthopaedic & Spine Surgeon  
MBBS & M.S ORTHO (UM), MASTER SPINE SURGERY  
(SPAIN), AO SPINE GLOBAL DIPLOMA (SWITZERLAND),  
ENDOSCOPIC SPINE SURGERY (WOORIDUL, SOUTH  
KOREA), ENDOSCOPIC SPINE SURGERY PROGRAMME  
(EUROSPINE, CAMBRIDGE), ENDOSCOPIC SPINE  
FELLOWSHIP (SUSHRUTA, INDIA)  
MMC NO: 46465 | NSR NO: 136400

## RADIOLOGY



**DR. JANICE WEE YONG LI**  
Resident Consultant  
Radiologist  
MBBCHBAO (IRELAND),  
FRCR (UK)  
MMC NO: 70032 | NSR NO: 142824



## MEET OUR RESIDENT MEDICAL OFFICERS



**DR. PRAGASH MANIAM**

MD (RNRMU)

**MMC NO: 76864**

**Accident & Emergency Department**



**DR. BONG JI YUAN**

MD (CSMU), CMIA, TTT, OHD (DOSH)

**MMC NO: 51792**

**Health Screening Centre,  
Level 2**

- Certified OSH Doctor
- PETRONAS & MPM AME
- Certified OEUK Doctor
- Approved Medical Practitioner for Marine
- Certified Medical Review Officer



**DR. LEVINRA V. VIJIAKUMAR**

MD (UNUD)

**MMC NO: 73996**

**Accident & Emergency Department**



**DR. LIEW SZE YUAN**

MBBS (IMU)

**MMC NO: 86952**

**Accident & Emergency Department**



**DR. SYAKILA BINTI DOMING**

MBBS (INDIA)

**MMC NO: 90453**

**Accident & Emergency Department**





## **DR. AIDA ESA**

### **Resident Consultant Obstetrician & Gynaecologist**

**MBBS (MALAYA), MOG (MALAYSIA)**

#### **Clinic 1, Level 2**

Clinic Operating Hours:

Monday to Friday : 8:30AM - 5:00PM

Saturday : 8:30AM - 12:30PM

Sunday & Public Holidays: Closed (unless otherwise announced)

#### **Education**

- Graduated with MBBS from University of Malaya in 1996
- Completed Master of Obstetrics and Gynaecology (MOG) at SGH & UKM in 2003

#### **Professional Experience**

- Completed housemanship at HUSM Kubang Kerian
- Served as a Medical Officer at Miri General Hospital until 1999
- Over 20 years of experience in Obstetrics and Gynaecology

#### **Professional Membership**

- Member of ISUOG (International Society of Ultrasound in Obstetrics and Gynaecology)

#### **Special Interest**

- Focus on Fetal Medicine

#### **Specialisations**

- Maternal-fetal Medicine
- Childbirth
- Female Reproductive Health
- Pregnancy-problems
- Sexual Health Screening
- Sexually Transmitted Infections
- Pelvic Ultrasound
- Pap Smear
- Infertility Counseling

Feel free to reach out to us for any inquiries at +6085 649 999 (General Line)



**DR. ARUN ILANTHIRAYAN  
A/L KANIAPPAN**

**Resident Consultant Anaesthesiologist**

**MBBS (MALAYA), M. MED ANAESTHESIOLOGY (UM)**

**Education**

- MBBS from University of Malaya (2002)
- Master of Medicine (Intensive Care Management) from National University of Singapore (2008)
- Master in Anaesthesiology from University Malaya Medical Center (2011)

**Professional Experience**

- Served as a Medical Officer in the Anaesthesiology Department at Penang Hospital
- Worked as an Anaesthesiologist at Sarawak General Hospital, Kuching
- Began practice in a private hospital in 2013

**Certifications**

- Certified Basic Advanced Life Support Instructor

Feel free to reach out to us for any inquiries at +6085 649 999 (General Line)





## **DR. ALISA VICTORIA KOH**

### **Resident Consultant Ophthalmologist & Vitreoretinal Surgeon**

MD (USM), MMED (OPHTAL) (USM),  
CCFT VITREORETINA, MINISTRY OF HEALTH MALAYSIA,  
FELLOWSHIP IN RETINA (AUS)

#### **Clinic 12, Level 2**

Clinic Operating Hours:

Monday to Friday : 8:30AM - 5:00PM

Saturday : 8:30AM - 12:30PM

Sunday & Public Holidays: Closed (unless otherwise announced)

### **Education**

- Graduated from Universiti Sains Malaysia (2001 - 2006)
- Master of Medicine (Ophthalmology) – Universiti Sains Malaysia (2010 - 2014)
- Vitreoretina Fellowship (Malaysia) – Ministry of Health (2018 - 2022)
- Retina Fellowship (International) – Flinders Medical Centre, Adelaide, Australia (2021–2022)

### **Professional Experience**

- House Officer & Junior Medical Officer at Hospital Likas & Hospital Queen Elizabeth, Sabah (2006 - 2007)
- Medical Officer at Klinik Kesihatan Jalan Oya, Sibu & Klinik Kesihatan Keningau, Sabah (2008 - 2010)
- Medical Officer (Ophthalmology) at Hospital Umum Sarawak, Kuching (2010 - 2012)
- Medical Officer (Ophthalmology) at (2012 - 2014)
- Ophthalmology Specialist at Hospital Miri (2014 - 2018)
- Vitreoretina Fellow at Hospital Selayang, Selangor (2018 - 2021)
- Consultant Ophthalmologist (Vitreoretinal Subspecialist) at Hospital Umum Sarawak, Kuching (2022)
- Consultant Ophthalmologist (Vitreoretinal Subspecialist) at Hospital Miri (2023 - 2025)

### **Specialisation & Procedures Performed**

- Eye Disease & Surgical Procedures
- Rhegmatogenous Retinal Detachment
- Diabetic Tractional Retinal Detachment
- Vitreous Haemorrhage (Bleeding)
- Macula Hole
- Epiretinal Membrane
- Endophthalmitis
- Intraocular Foreign Body
- Lens Dislocation
- Complications of Cataract Surgery

Feel free to reach out to us for any inquiries at +6085 649 999 (General Line)





## DR. DENNY CLARE @ CHARLES A. EMBUN

### Resident Consultant Orthopaedic & Spine Surgeon

MBBS & M.S ORTHO (UM), MASTER SPINE SURGERY (SPAIN), AO SPINE GLOBAL DIPLOMA (SWITZERLAND), ENDOSCOPIC SPINE SURGERY (WOORIDUL, SOUTH KOREA), ENDOSCOPIC SPINE SURGERY PROGRAMME (EUROSPINE, CAMBRIDGE), ENDOSCOPIC SPINE FELLOWSHIP (SUSHRUTA, INDIA)

### Clinic 9, Level 2

Clinic Operating Hours:

Monday to Friday : 8:30AM - 5:00PM

Saturday : 8:30AM - 12:30PM

Sunday & Public Holidays: Closed (unless otherwise announced)

### Education

- Bachelor of Medicine (MBBS) from University of Malaya (2007)
- Master in Orthopedic Surgery (M.S Ortho) from University of Malaya (2016)
- Professional Master Degree of Spinal Surgery, Spain (2023)
- AO Spine Global Diploma, Switzerland (2024)
- Endoscopic Spine Surgery Training at Wooridul Spine Hospital, South Korea (2023)
- Endoscopic Spine Fellowship, Sushruta, India (2023)
- Endoscopic Spine Surgery Programme, Eurospine, Cambridge (2024)

### Professional Experience

- Housemanship in Sarawak General Hospital, Kuching (2007-2008)
  - Medical (June 2007-October 2007)
  - Orthopaedic (2007-2008)
  - Obstetrics & Gynaecology (March 2008-June 2008)
- Medical Officers / Master
  - Miri General Hospital (2006-2012)
  - In Master Programme, Sarawak General Hospital (2012-2014)
  - In Master Programme, University Malaya Medical Centre, KL (2014-2016)
- Specialist
  - Period of Gazettement as Specialist (January 2017-June 2017)
  - Sarawak General Hospital (January 2017-March 2017)
  - Miri General Hospital (April 2017-September 2019)

### Specialisation & Procedures Performed

- |  |  |
|--|--|
| <ul style="list-style-type: none"> <li>• Trauma</li> <li>• Spine Surgery &amp; Spine Trauma</li> <li>• Minimal Invasive Surgery</li> <li>• Degenerative Joint Disease</li> <li>• Joint Replacement &amp; Arthroscopy</li> <li>• Spine Instrumentation</li> <li>• Sport Injuries &amp; Soft Tissue Procedure such as Carpal Tunnel Release</li> <li>• Trigger Finger Release</li> <li>• Removal of Lumps &amp; Bumps as well as Tendon Works</li> </ul> | <ul style="list-style-type: none"> <li>• Endoscopic Spine Surgery</li> <li>• Nerve Pain</li> <li>• Osteoporosis</li> <li>• Counseling about drugs for bone &amp; joints</li> <li>• Shoulder Pain</li> <li>• Fracture</li> <li>• Tendon Inflammation</li> <li>• Knee Inflammation</li> <li>• Ganglion</li> <li>• Meniscal Repair</li> <li>• Gout Complications</li> </ul> |
|--|--|

Feel free to reach out to us for any inquiries at +6085 649 999 (General Line) | +60 19 773 9936 (Dr. Denny Clare's Clinic)





## **DR. JANICE WEE YONG LI**

**Resident Consultant Radiologist**  
MBBCHBAO (IRELAND), FRCR (UK)

### **Diagnostic Imaging Services, Level 1**

Clinic Operating Hours:

Monday to Friday : 8:30AM - 5:00PM

Saturday : 8:30AM - 12:30PM

Sunday & Public Holidays: Closed (unless otherwise announced)

### **Education**

- Graduated from National University of Ireland (2014)
- Fellow of the Royal College of Radiologists (FRCR), United Kingdom (2021)

### **Professional Experience**

- House Officer at Sarawak General Hospital (2014 - 2016)
- Radiology Trainee at Miri Hospital (2016 - 2021)
- Clinical Radiologist at Sarawak General Hospital (2022 - 2023)
- Peer Auditor at Vital Radiology, United Kingdom (2023 - 2025)
- Clinical Radiologist at Miri Hospital (2024 - 2025)

### **Diagnostic Imaging Services**

- X-Ray (Digital Radiography)
- Ultrasound (General, Small Parts, Doppler)
- Mammogram
- Fluoroscopy
- CT (Multiphasic, Angiogram, HRCT Chest, 3D Reconstruction)
- MRI

### **Specialised Reporting**

- Emergency and Trauma Radiology
- Oncology Imaging (Cancer Screening and Staging)
- Preoperative & Postoperative Assessments

### **Interventional Radiology**

- Image-Guided Procedures (FNAC, Biopsy, Drainages, Venous access)

### **Teleradiology Services**

- Second Opinions
- Patient Consultation for Imaging Interpretation
- Peer Review

Feel free to reach out to us for any inquiries at +6085 649 999 (General Line) | +60 16 876 7260 (Dr. Janice Wee)





## **DR. LAU KENT TER**

### **Resident Consultant Internal Medicine**

MBBS (AIMST), HKCPIE (HK)-MRCP (UK), MRCPS (GLASG), CMIA (NIOSH), AM (MAL), FRCP (UK), FRCP (IRELAND)

#### **Clinic 11, Level 2**

Clinic Operating Hours:

Monday to Friday : 8:30AM - 5:00PM

Saturday : 8:30AM - 12:30PM

Sunday & Public Holidays: Closed (unless otherwise announced)

### **Education**

- Graduated from AIMST University (2009)
- Passed MRCP (UK) / Hong Kong College Physician Intermediate Examination conjoint exam in Hong Kong

### **Professional Experience**

- House Officer at Hospital Raja Permaisuri Bainun, Ipoh & Sarawak General Hospital, Kuching
- Medical Officer in the Medical Department of Sarawak General Hospital (2011–2013)
- Research Physician at Sarawak Heart Centre (2011–2013)
- Physician at Miri General Hospital

### **Achievements & Recognitions**

- Nominated as Academician in Academy of Medicine, Malaysia (AM [MAL])
- Fellow Physician of the Royal College of Physicians and Surgeons, Glasgow, UK (FRCP [Glasgow]) in 2019
- Admitted as a Fellow of the Royal College of Physicians of Ireland in 2020

### **Notable Accomplishment**

- One of the youngest consultants in the region to achieve dual fellowships from two European countries.

### **Services & Treatments**

#### **Internal Medicine Related Health Conditions such as:**

- Diabetes Mellitus
- Hypertension
- Infectious Diseases
- Endocrinopathies
- Autoimmune & Connective Tissue Diseases
- Chronic Kidney Disease
- Cardiology & Pulmonary
- Stroke & Parkinsonism
- Lifestyle Medicine
- Aging Population Healthcare

Feel free to reach out to us for any inquiries at +6085 649 999 (General Line)





**DR. MATTHEW TONG JONG HAW**  
**Resident Consultant Ophthalmologist**  
MD (UMS), MMED (USM)

**Clinic 15, Level 2**

Clinic Operating Hours:

Monday to Friday : 8:30AM - 5:00PM

Saturday : 8:30AM - 12:30PM

Sunday & Public Holidays: Closed (unless otherwise announced)

**Education**

- Graduated with a Medical Degree from Universiti Malaysia Sabah (2009)
- Completed Master of Medicine in Ophthalmology at Universiti Sains Malaysia (2019)

**Professional Experience**

- House Officer at Hospital Queen Elizabeth (2009–2011)
- Medical Officer at Hospital Papar (2011–2013)
- Medical Officer in Ophthalmology at Hospital Queen Elizabeth (2013–2015)
- Ophthalmologist at Hospital Umum Sarawak (2019–2022)
- Joined KPJ Miri Specialist Hospital as a Resident Consultant Ophthalmologist (July 2022)

**Notable Accomplishment**

- The only Resident Consultant Ophthalmologist in a private hospital in Miri.

**Procedures Performed & Treatment**

- Cataract Surgery
- Pterygium Excision
- Excision of Eyelid Growth and Bumps
- Intravitreal Treatment
- Laser Treatment

**Treatment of Various Eye Condition such as:**

- Diabetic Retinopathy
  - Age Related Macula Degeneration (AMD)
  - Polypoidal Choroidal Vasculopathy (PCV)
  - Retina Vascular Disorders
  - Refractive Error
- and other various eye conditions

Feel free to reach out to us for any inquiries at +6085 649 999 (General Line) | +60 14 993 1588 (Dr. Matthew Tong's Clinic)





## DR. PUI WEI CHIENG

### Resident Consultant General & Laparoscopic Surgeon

MBBS (IMU), MRCS (ED), DRGENSURG (UKM),  
CMIA (NIOSH)

#### Clinic 8, Level 2

Clinic Operating Hours:

Monday to Friday : 8:30AM - 5:00PM

Saturday : 8:30AM - 12:30PM

Sunday & Public Holidays: Closed (unless otherwise announced)

#### Education

- Graduated with MBBS from International Medical University (IMU) (2007)
- Completed Membership Examination of the Royal College of Surgeons (Edinburgh, UK) in 2012
- Awarded Doctor of General Surgery, Master's Degree by Universiti Kebangsaan Malaysia (UKM) (2016)

#### Professional Experience

- House Officer at Sibu Hospital
- Medical Officer in Obstetrics & Gynaecology, Internal Medicine & General Surgery
- Advanced surgical training in Sarawak General Hospital and Hospital Universiti Kebangsaan Malaysia (HUKM) (2012–2016)
- Head of Surgical Department at Kapit Hospital (2017), overseeing Emergency Neurosurgery, ENT cases and Orthopaedic cases

#### Notable Accomplishment

- Revived surgical services at Kapit Hospital
- Introduced laparoscopic (minimally invasive) surgery in Kapit, including:
  - Laparoscopic Appendicectomy
  - Laparoscopic Cholecystectomy
  - Laparoscopic Inguinal Hernia Surgeries

#### Procedures Performed

- Gastroscopy (Stomach)
- Colonoscopy (Colon)
- Appendectomy
- Gallstone
- Circumcision (Sunat)
- Swellings / Lumps
- Breast Lump / Cancer
- Typhoid
- Stomach Ulcer
- Bowel Surgery / Cancer
- Hernia
- Hemorrhoids

#### Special Interests

- Minimally Invasive Surgery
- Laparoscopic Surgery
- Colorectal Surgery

Feel free to reach out to us for any inquiries at +6085 649 999 (General Line) | +60 10 650 8782 (Dr. Pui Wei Chieng's Clinic)





## DR. PHILIP LING HUNG TOH

### Resident Consultant Paediatrician

MBBS (AIMST), MRCPCH (UK),  
POSTGRAD DIP PAED NUTRITION (BOSTON),  
EARLY NUTRITION SPECIALIST (LMU),  
DIPLOMA DERMATOLOGY (RCPI)

### Clinic 10, Level 2

Clinic Operating Hours:

Monday to Friday : 8:30AM - 5:00PM

Saturday : 8:30AM - 12:30PM

Night Clinic : Wednesday & Friday, 6:30PM - 9:00PM  
(unless otherwise announced)

Sunday & Public Holidays: Closed (unless otherwise announced)

### Education

- Graduated from AIMST University, Kedah, Malaysia (2009–2013)
- MRCPCH (UK) – Royal College of Paediatrics and Child Health, UK (2022)
- Postgraduate Diploma in Paediatric Nutrition, Boston, USA
- Early Nutrition Specialist Certification, Ludwig Maximilian University (LMU), Germany
- Diploma in Dermatology, Royal College of Physicians of Ireland (RCPI)

### Professional Experience

- House Officer at Miri Hospital, Sarawak
- Paediatric Medical Officer – Department of Paediatrics, Hospital Miri (2016–2019)
- Paediatric Medical Officer – Hospital Tunku Azizah, Kuala Lumpur (2019–2022)  
Rotations in General Paediatrics, Neonatology, Paediatric Haematology-Oncology, PICU, Paediatric Emergency, Paediatric Nephrology, Paediatric Neurology, and Paediatric Gastro-Hepatology & Nutrition
- Paediatrician – Department of Paediatrics, Hospital Miri (2022–2024)

### Training & Certification

- Neonatal Resuscitation Program Instructor – Actively trains doctors & nurses
- Advanced Paediatric Life Support (UK APLS 6th edition) – Completed in 2018
- Basic Life Support (BLS)
- Paediatric Basic Life Support (PBLS)
- Advanced Trauma Life Support (ATLS)
- Basic Emergency Ultrasound
- Advanced Cardiovascular Life Support (ACLS)

### Specialisation

- Newborn Resuscitation and Stabilisation
- Newborn Care
- Neonatal Jaundice
- Growth and Development of Babies and Children
- Vaccines and Immunisation
- Management for Acute or Chronic Childhood Illness
- Paediatric Nutrition
- Learning Problem and Development Screening

Feel free to reach out to us for any inquiries at +6085 649 999 (General Line) | +60 11 1503 1314 (Dr. Philip Ling's Clinic)





## **DR. SELVA KUMAR A/L SUBRAMANIAM**

### **Resident Consultant Ear, Nose, Throat & Neck Surgeon**

**MBBS (MAL), FRCS (IREL), FRCS (GLAS), MS ORL (MAL)**

#### **Clinic 6, Level 2**

Clinic Operating Hours:

Monday to Friday : 8:30AM - 5:00PM

Saturday : 8:30AM - 12:30PM

Night Clinic: Only on announced dates

Sunday & Public Holidays: Closed (unless otherwise announced)

#### **Education**

- Graduated with MBBS from University of Malaya (1992)
- Obtained FRCS (Fellowship of the Royal College of Surgeons) in Ireland and Glasgow (1998)
- Awarded Master of Surgery in Otorhinolaryngology (MS, ORL) from University of Malaya (1999)

#### **Professional Experience**

- House Officer at Terengganu Hospital (1992–1993)
- Medical Officer at Belaga Clinic (1993–1994)
- Medical Officer at Sarawak General Hospital (1994–1997)
- Specialist in Ear, Nose, and Throat at Sarawak General Hospital (1999–2007)
- Fellowship in Facial Plastics, Head & Neck Reconstructive Surgery at Royal Adelaide Hospital, South Australia (during tenure at Sarawak General Hospital)
- Practicing as an ENT specialist in the private healthcare sector since 2007

#### **Notable Accomplishment**

- Nearly 30 years of experience in ENT and head & neck surgery
- Expertise in facial plastics and head & neck reconstructive surgery

#### **Procedures & Treatments**

- Ear, Nose, Throat & Neck Chronic Infections
- Reconstructive Facial & Plastic Surgeries
- Nasopharynx Cancer Detection Screening
- Hearing Loss
- Tinnitus
- Rhinology
- Sleep Apnea
- Tonsillectomy
- Management of Vertigo

#### **Subspecialty**

- Facial Plastics + Head & Neck Reconstructive Surgery

#### **Special Interests**

- Surgery related to cancer and head and neck reconstructive surgery

Feel free to reach out to us for any inquiries at +6085 649 999 (General Line)





## **DR. WONG TIONG HIEN**

### **Resident Consultant Paediatrician**

**MD (USM), MRCPCH (UK)**

#### **Clinic 3, Level 2**

Clinic Operating Hours:

Monday to Friday : 8:30AM - 5:00PM

Saturday : 8:30AM - 12:30PM

Night Clinic: Tuesday, 7:00PM - 8:30PM (unless otherwise announced)

Sunday & Public Holidays: Closed (unless otherwise announced)

#### **Education**

- Graduated with Doctor of Medicine (MD) from Universiti Sains Malaysia (2002)
- Passed all four medical exams at the Royal College of Paediatrics and Child Health and became a Member (MRCPCH) (2014)

#### **Professional Experience**

- House Officer at Sibu Hospital (2002–2003)
- Medical Officer at Sibu Hospital, Kapit Hospital, Miri Hospital (2003–2013)
- Paediatrician in private hospitals since 2016

#### **Notable Accomplishment**

- Nearly two decades of medical experience

#### **Specialisations**

- Health Growth of Babies and Children
- Immunisations
- Children Healthcare Management
- Chronic Diseases
- Asthma
- Allergies
- Eczema
- Gastroenteritis
- Infectious Diseases (Hand Foot & Mouth Disease, Bronchitis, Pneumonia, Influenza, Chickenpox, Tuberculosis, etc.)

Feel free to reach out to us for any inquiries at +6085 649 999 (General Line) | +60 11 5757 6586 (Dr. Wong Tiong Hien's Clinic)





## **DR. WONG LEE LEONG**

### **Resident Consultant Obstetrician & Gynaecologist Laparoscopic Surgeon**

**MD (USM), MRCOG (UK), FACOG (USA), F.MAS (INDIA)**

#### **Clinic 5, Level 2**

Clinic Operating Hours:

Monday to Friday : 8:30AM - 5:00PM

Saturday : 8:30AM - 12:30PM

Night Clinic: Wednesday & Friday, 6:30PM - 9:00PM  
(unless otherwise announced)

Sunday & Public Holidays: Closed (unless otherwise announced)

### **Education**

- Medical Degree (MD) – Universiti Sains Malaysia (2013)
- MRCOG – Royal College of Obstetricians and Gynaecologists, UK (2022)
- FACOG – American College of Obstetricians and Gynaecologists, USA (2022)

### **Professional Experience**

- House Officer at Hospital Sibu (2014–2015)
- Medical Officer (Obstetrics & Gynaecology) at Hospital Sibu (2015–2017)
- Medical Officer (Obstetrics & Gynaecology) at Hospital Bintulu (2017–February 2022)
- Obstetrics & Gynaecology Specialist at Sarawak General Hospital (March–December 2022)
- Obstetrics & Gynaecology Specialist at Hospital Bintulu (January 2023–March 2024)
- Obstetrics & Gynaecology Specialist at Hospital Putrajaya (April 2024) – Laparoscopy Training

### **Specialisations**

#### **Obstetrics:**

- Antenatal Care & Follow-Up
- Obstetric Scan (3D/4D/5D)
- Normal/Instrumental Deliveries
- Caesaran Sections
- Postnatal Care

#### **Gynaecology:**

- Minimally Invasive Surgery (Keyhole) or Open Surgery
- Hysteroscopy & Biopsy
- Examination Under Anaesthesia
- Colposcopy, Cervical Biopsy or Loop Excision (LLETZ)

#### **Female Sexual Health:**

- Sexual Health Screening
- Pap Smear / Liquid Based Cytology / HPV Testing
- Pre-Pregnancy Counselling
- Family Planning Advice & Contraceptive

Feel free to reach out to us for any inquiries at +6085 649 999 (General Line) | +60 14 555 8262 (Dr. Wong Lee Leong's Clinic)



# MEET OUR SESSIONAL CONSULTANTS



**DR. BEATRIX HII YUNG SIANG**

**Orthopaedic Surgeon**  
MD (KSMU), MORTHSURG (UM)



**DR. LAU BIK LIANG**

**Neurosurgeon**  
MD (USM), MS (Neurosurgery) (USM)



**DR. CHAN SIEW HONG**

**Urologist**  
MBBS, MRCS, MRS, FRCS (URO)



**DR. LIM TZYY HUEI**

**Dermatologist**  
MD (FMSMU), MRCP (UK), AM (MAL),  
CMIA (NIOH) PGDIP IN PRACTICAL  
DERMATOLOGY (CARDIFF)  
ADVM IN DERMATOLOGY (UKM),  
FELLOWSHIP IN DERMATOLOGY (MOH)



**DR. DAPHNE DEWI STEPHEN**

**Plastic, Reconstructive &  
Aesthetic Surgeon**  
MD (UNIMAS),  
MSURG (PLASTIC SURGERY) (USM)



**DR. PUBALAN MUNIANDY**

**Dermatologist**  
MBBS (UM), MRCP (UK),  
DIP. GENITOURINARY MEDICINE  
(LONDON)



**DR. HARRIS ROLAND DEMONG**

**Gynae-Oncologist, Obstetrician &  
Gynaecologist**  
M.D (USM), M.MED (OBSTETRIC &  
GYNAECOLOGY) (UKM),  
FELLOWSHIP IN GYNAECOLOGY ONCOLOGY



**DR. PRAVIND NARAYAN**

**Internal Medicine**  
MBBS (AIMST), MRCP (UK),  
FRCP (EDIN) CMIA (NIOH)



**DR. INGRID TING PAO LIN**

**Internal Medicine & Dermatology**  
MD (KSMU), MMED (USM), ADVMDERM  
(UKM), AM (MAL), CMIA (NIOH)



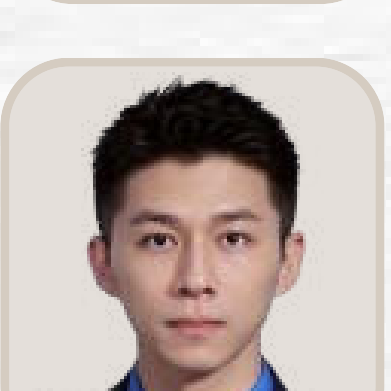
**DR. RAVIVARMA RAO**

**Psychiatrist**  
MBBS (AIMST UNIVERSITY),  
MRCPSYCH (UK)



**DR. KENNETH VOON KHER TI**

**General & Colorectal Surgeon**  
MD, MMED (USM), MRCS(ED), CCT  
(COLORECTAL SURGERY)



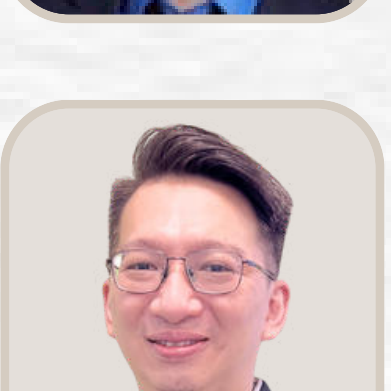
**DR. TAN CHA CHEE**

**Physician, Gastroenterologist &  
Hepatologist**  
MD (UKM), MRCP (IRELAND), ESEGH (UK),  
FELLOWSHIP IN GASTROENTEROLOGY &  
HEPATOLOGY (MALAYSIA), FELLOWSHIP IN  
ADVANCED ENDOSCOPY (JAPAN & CHINA)



**DR. LIM WOUI KOK**

**Paediatric Cardiologist**  
MD (USM), MRCPSCH (UK)



**DR. TIE TECK LIANG**

**Ortho-Oncologist & Trauma Surgeon**  
MD (KSMU), MS.ORTHO (USM), CMIA  
(NIOH), FELLOWSHIP IN  
MUSCULOSKELETAL ORTHOPAEDIC  
ONCOLOGY (MOH, TAIWAN)



**DR. LIM BOON CHUAN**

**Paediatrician, Specialised in  
Developmental Paediatrics**  
MD (UKM), MRCPCH (UK), FELLOWSHIP  
IN DEVELOPMENTAL PAEDIATRICS (MAL)

Feel free to reach out to us for any inquiries or appointments at +6085 649 999 (General Line)



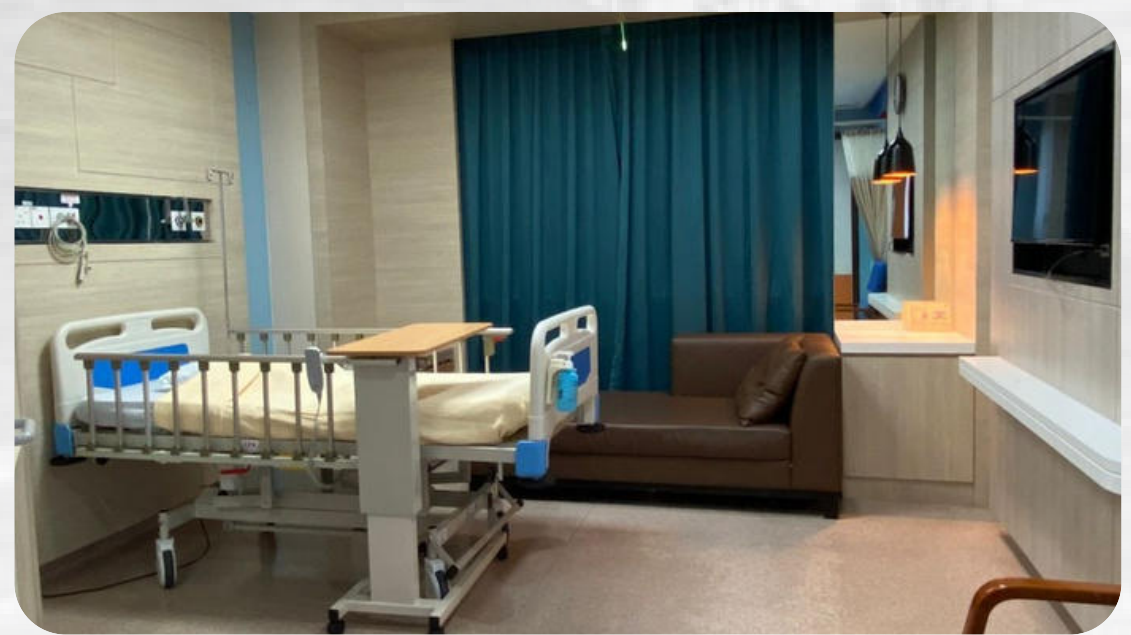
## RECOVERY IN COMFORT: OUR ROOM TYPES



### TWO-BEDDED ROOM

Room Rate: RM 120 per night

- Room Size: 25' X 12.5'
- Air Conditioned
- Shared Bathroom
- 32" Flat Screen TV
- Side Cabinet
- Visitor's Chair



### SINGLE ROOM

Room Rate: RM 200 per night

- Room Size: 25' X 12'
- Air Conditioned
- Personal Bathroom
- 32" Flat Screen TV
- Wardrobe & Side Cabinet
- Sofa Bed & Visitor's Chair



### SINGLE STANDARD ROOM

Room Rate: RM 250 per night

- Room Size: 25.5' X 13'
- Air Conditioned
- Personal Bathroom
- 32" Flat Screen TV
- Wardrobe & Side Cabinet
- Sofa Bed & Visitor's Chair



### EXECUTIVE SUITE

Room Rate: RM 400 per night

- Room Size: 23' X 13'
- Air Conditioned
- Personal Bathroom
- 40" Flat Screen TV
- Sofa Bed & Visitor's Chair
- Living Room with Sofas
- Mini Kitchen
- Guest's Bathroom



A faded, light-colored background image of the KPJ Miri Specialist Hospital building, showing its modern architecture and multiple wings.

## OUR SERVICES & FACILITIES

- 24-Hour Accident & Emergency Department (Ambulance & Emergency Services)
- 24-Hour Wound Care Clinic (at the Accident & Emergency Department)
- KPJ Miri on Wheels (Health Care at Your Doorstep)
- Pharmacy Services
- Diagnostic Imaging Services (1.5T MRI, 160-Slices CT SCAN, Mammography, 3D Ultrasound & General X-Ray)
- Hornbill Café (Cafeteria)
- Concierge & Wheelchair Service
- Outpatient Specialist Clinics
- Lablink (In-House Laboratory Services)
- Audiometry Booth
- Health Screening Centre (Includes Occupational Safety and Health Screening & OEUK Medical Check Up)
- Nebuliser Room
- Audiometry Neonatal Audiology Services
- Children Play Area
- Operation Theatre
- Endoscopy & OGDS Room
- Intensive Care Unit (ICU)
- OT Patient Waiting Area
- Physiotherapy & Rehabilitation Services
- Maternity Ward
- Labor Room & Nursery
- Cardiac Screenings



## PHYSIOTHERAPY TREATMENT TOOLS

- Laser Therapy Machine
  - Shockwave Machine
  - Ultrasound Machine
  - Transcutaneous Electrical Nerve Stimulation Machine
  - Interferential Therapy Machine
  - Infrared Machine
  - Cryocuff
  - Electric Patient Hoist
  - Traction Machine + Bed
  - Treatment Bed
- Weight Cuff
  - Parallel Bar
  - Treadmill
  - Ergometer Bike
  - Bench Press
  - Shoulder Wheel
  - Bobath Table
  - Tilt Table
  - Gym Ball
  - Trampoline

## LABLINK (IN-HOUSE LABORATORY) SERVICES

### Biochemistry & Serology

Biochemistry test consists of:

- Renal Profile
- Lipid Profile
- Cardiac Profile
- Diabetes Profile
- Liver function Screening
- Rheumatoid Screening

Serology test consists of:

- Hepatitis A Screening
- Hepatitis B Screening
- HIV Screening
- Thyroid Profile
- VDRL Screening

### Hematology & Microbiology

Hematology test consists of:

- Full Blood Count
- Erythrocyte Sedimentation Rate (ESR)
- Blood Grouping (ABO & Rhesus)
- Peripheral Blood Film
- Reticulocyte Count
- Coagulation Profile

Microbiology test consists of:

- Bacteriology, Mycology and Mycobacteriology supported by Consultant Microbiologist



# COMPREHENSIVE ACCIDENT & EMERGENCY SERVICES

At our Accident & Emergency Department, we specialise in managing critically ill and emergency cases with precision and care. We provide prompt outpatient treatment for walk-in patients requiring urgent medical attention.

Our Accident & Emergency Department is fully equipped with advanced emergency equipment, supported by a dedicated team of highly skilled and clinically trained healthcare professionals, ensuring you receive the best care when it matters most.

## A&E FACILITIES

### One Red Zone Area (Critical Bed)

- Comprises of one emergency bed fully equipped with acute resuscitation & management equipment.

### Three Yellow Zone Areas (Semi-Critical Beds)

### Green Zone Areas (Waiting Area) with 1 Consultation Room

### 24-Hour Ambulance & Emergency Services

### Decontamination Shower Room

- For Burns and Trauma cases

### 24-Hour Wound Care Clinic - Available for Walk-In

#### Types of Wound Management:

- Diabetic Wound
- Surgical Wounds\*
- Infectious Wounds
- Vascular Leg Ulcers
- Pressure Ulcers
- Stoma Care