

Exterior Insulation and Finish System (EIFS)

Stef Green System plus

Stef Green System: specifications on following pages

EIF System for exterior gypsum panel or cement panel substrate

Green System Plus: pressure equalization EIF System that incorporates a secondary protective barrier in conjunction with geometrically defined drainage features in the Type 1 **Stef GD Drainage Board / Impermea**. The EIFS integrates an adhesive coating to attach the Stef GD Drainage Board to the substrate. **Used for commercial construction.**

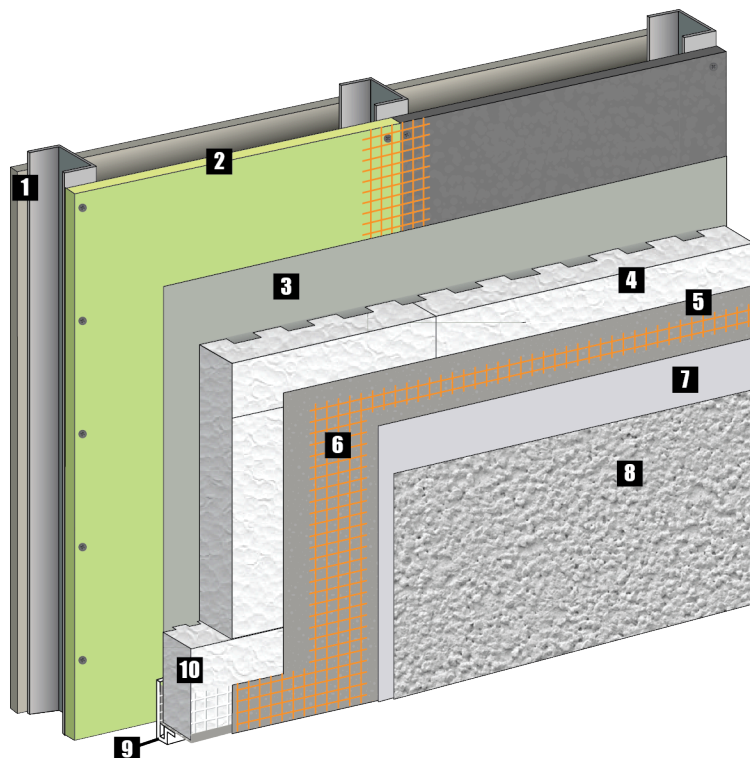
The **Green System Plus** meets the requirement of CCMC as per report #13328-R

Products used for installation

(See technical product data sheets for more information)

- **Stef GD Drainage Board / Impermea**
- **Stef Barrier Plus**
- **Fibreglass Mesh**

- **Stef Prep Coat**
- **Stef Roll-on**
- **Stef Finish & Stef Architectural Coat**



- 1** Steel structure
- 2** Substrate (gypsum or concrete panel)
- 3** Air and water penetration barrier membrane. *Stef Barrier Plus* is also used as an adhesive
- 4** *Stef GD Drainage Board / Impermea* grooved insulation panel
- 5** *Stef Prep Coat* base coat
- 6** Fiberglass mesh embedded in the base coat
- 7** *Stef Roll-on* primer coat
- 8** *Stef Finish & Stef Architectural Coat* finish coat
- 9** PVC Starter Strip
- 10** Grooved insulation starter pre-coated strip with mesh buried in base coating