



LOTUS JOINT VENTURE COMPANY



**WELCOME
TO
LOTUS PORT**

ALWAYS FOR CUSTOMERS' INTERESTS

Infrastructure - Facilities - Equipment

- Our wharves (**K.17 & K.18**) have a total of **300m length** and have been designed to accommodate ship up to **60,000 DWT – Draft 10.5 meters**.
 - Additional 220m length wharf (**K16**) in partnership with Vegetexco port. Accommodate ship up to **20,000 DWT – Draft 9.0 meters**.
- ⇒ Total length of Lotus' berth increased to **500m** and capable of receiving 04 oversea-ship.



Infrastructure - Facilities - Equipment

- Our infrastructure has 170.000 Sqm, including:
 - Container Yard 100.000 Sqm
 - Storage 60.000 Sqm
 - Warehouses 10.000 Sqm



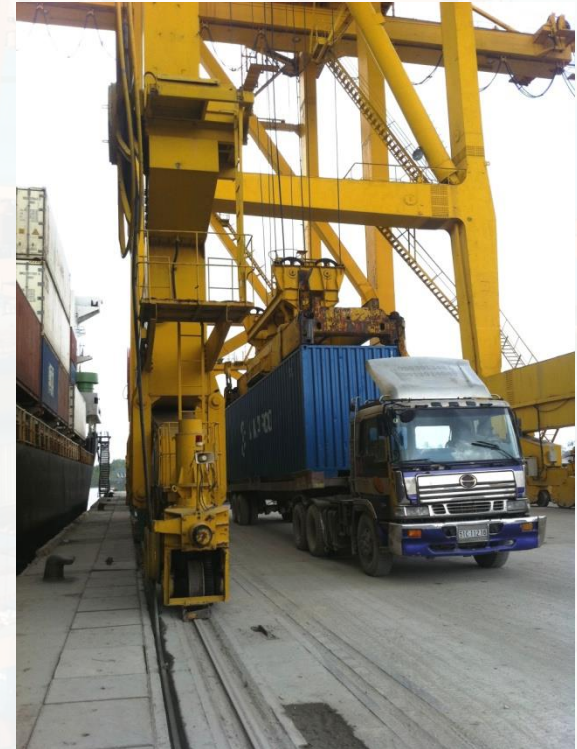
Storage

- **40.000 Sqm of General cargo yard** suitable for short-terms cargo.
- Convenient and Time efficient for cargo handling in and out .



Gantry Crane – Qty: 2 Pcs

- Specialized for handling containers.
 - Lifting capacity 40 tons. Outreach 33m.
 - Operate by experienced operator.



RMG Crane – Qty: 3 Pcs

- Specialized for handling containers.
 - Lifting capacity 40 tons
 - Operate by experienced operator.



Reach Stackers

- Specialized for handling container.
 - Handling both 20ft & 40ft Container (up to 45 Tons).
 - Operate by experienced workers.



Trailers & Tractors

- Specialized for handling containers.
 - Loading Capacity up to 35MT.
 - Operate by experienced workers.



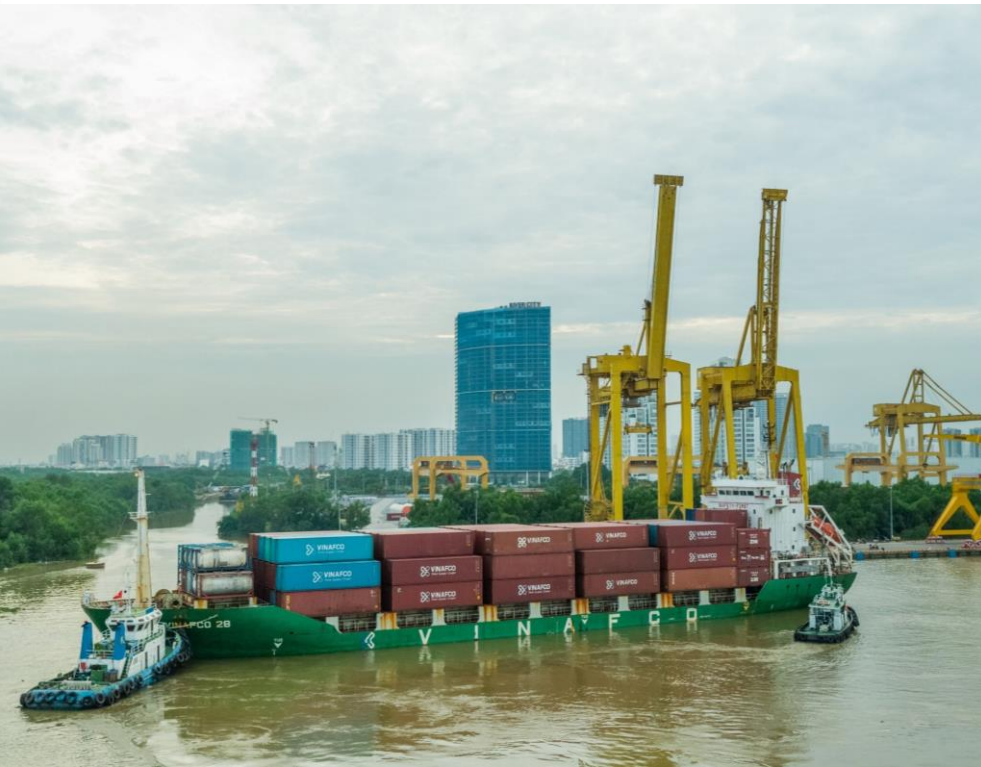
K'LINE VESSEL





VINAFCO VESSEL





CONTAINER HANDLING



HANDLING





24/7 Support

- Supporting all customers needs at anytime with Lotus Port 24/7 Support.





Contacts

- **LOTUS JOINT VENTURE COMPANY**
- **Add: 1A Nguyen Van Quy Street, Phu Thuan Ward, District 7, Hochiminh City**
- **Tel : (+ 84) 2838.730.146 / 2838.730.148 / 2838.730.334**
- **Fax : (+ 84) 2838.730.145 / 2838.730.147**
- **Email : info@lotusport.com**
- **Website : www.lotusport.com**



ALWAYS FOR CUSTOMERS' INTERESTS



THANK YOU



SEE YOU AGAIN