



LOTUS JOINT VENTURE COMPANY

ISO 9001
BUREAU VERITAS
Certification



**WELCOME
TO
LOTUS PORT**

ALWAYS FOR CUSTOMERS' INTERESTS

Prominent in Handling Equipment

- **Steel/Oversize, Overweight Equipment/Special Purpose Vehicles** is one of the prominent specialty of Lotus Port and the main focus on Lotus' development vision.



- With facilities and equipment specialized for **Steel/Oversize, Overweight Equipment/Special Purpose Vehicles stevedoring**. Cargos are guaranteed to be safely, fast and efficiently load/unload.



- Moreover, Lotus Port's official personnel with great experience, responsibility and co-operate ability have been and will always assure best performance.
- Good handling cargo skills, especially in loading an unloading equipment, higher lashing ability compared to other competitors





PROJECT CARGO



Discharging Wind-turbine projects



Discharging 350MTS Transformer



Discharging 350MTS Steel Bridge



Discharging 107 MTS equipment



Discharging 60MTS Equipment by combining cranes



Discharging 60MTS Transformer



Discharging 42MTS Equipment by combining cranes



Discharging 30MTS & 35M equipment



Discharging LIEBHERR CRANE 45m



Discharging 62MTS Equipment by joining crane



Discharging 60 MTS & 60M Equipment



Discharging 100 MTS Equipment



Discharging 146MTS TRANSFORMER to barge



Discharging 150MTS TRANSFORMER by Floating Crane



Discharging 158MTS Equipment by by Floating Crane



Discharging LILAMA CRANE



Discharging METRO PROJECT



Discharging METRO RAY



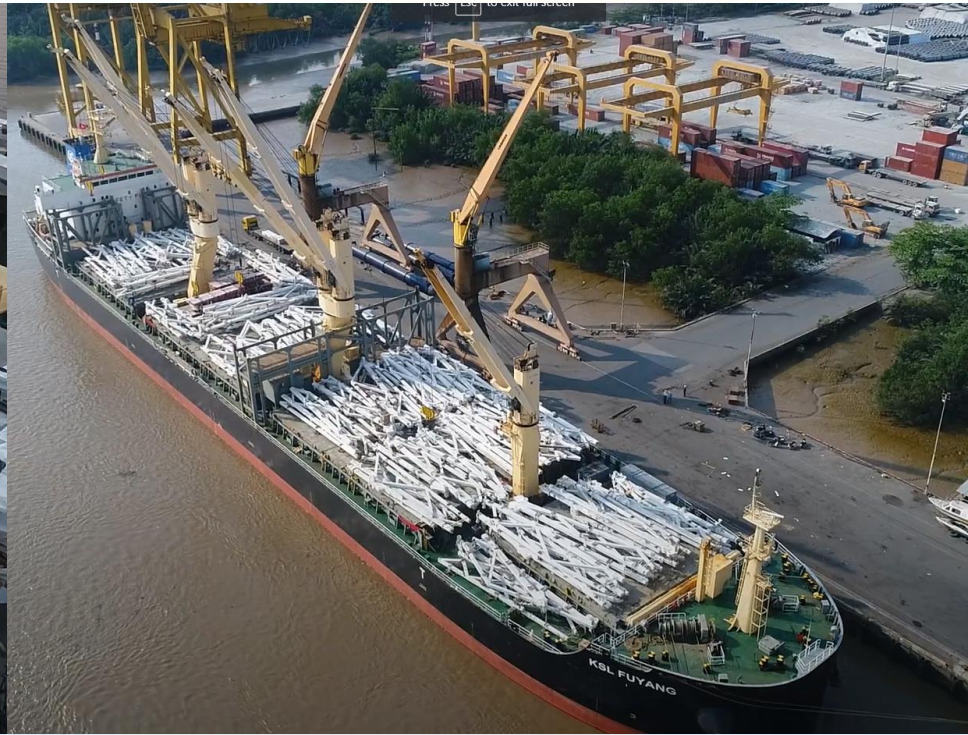
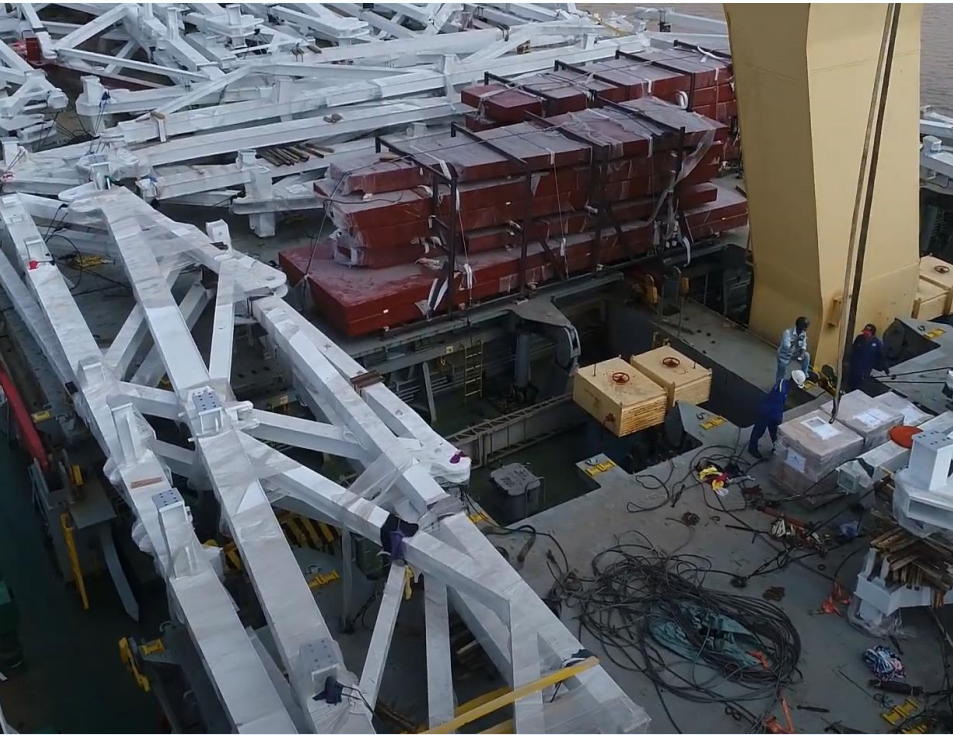
Loading Dai Dung structures – Powerhouse Parramatta – 1st Shipment



Loading Dai Dung structures – Powerhouse Parramatta – 2nd Shipment



Loading Dai Dung structures – QUATAR STADIUM



Loading DAI DUNG steel structures



Loading DAI DUNG steel structures

Loading Oversize & Overweight Dai Dung projects



Loading 45 MTS & 70M Equipment



Loading 60 MTS Equipment projects to barge





EQUIPMENT



Discharging Equipment







Loading Equipment





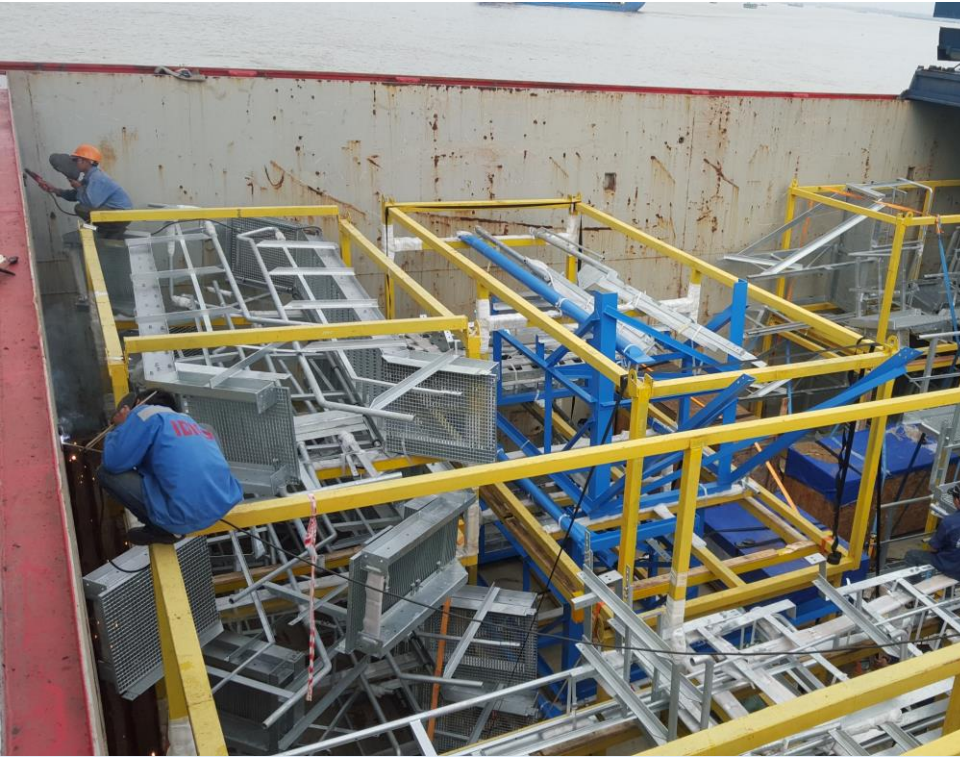












Infrastructure - Facilities - Equipment

- Our wharves (**K.17 & K.18**) have a total of **300m length** and have been designed to accommodate ship up to **60,000 DWT – Draft 10.5 meters**.
 - Additional **220m length** wharf (**K16**) in partnership with Vegetexco port. Accommodate ship up to **20,000 DWT – Draft 9.0 meters**.
- => Total length of Lotus' berths increased to 500m and capable of receiving 04 oversea-ship.**



Storage

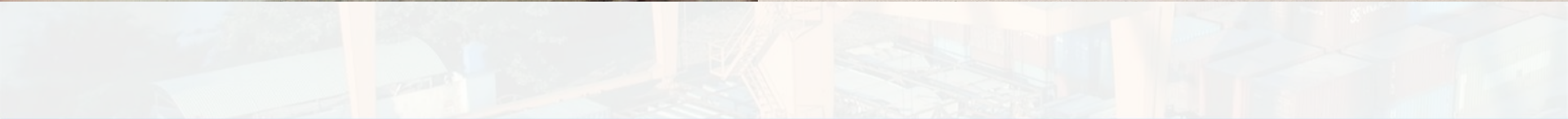
Our infrastructure has **170.000 Sqm**, including:

- Container Yard **100.000 Sqm**
- Storage **60.000 Sqm**
- Warehouses **10.000 Sqm**

(Container Yard & Storage yard can be use for multiple kind of cargo)







Warehouse

- **10.000 Sqm of warehouses** guarantee best storing conditions for cargo.
- Protect cargo from environmental effect and others harmful causes.



Liebherr Crane – Qty: 2 Pcs

- Specialized for handling steel and equipment.
 - Lifting capacity **40 tons**. Outreach **30m**.
 - **Can join-crane to handle up to 70 tons.**



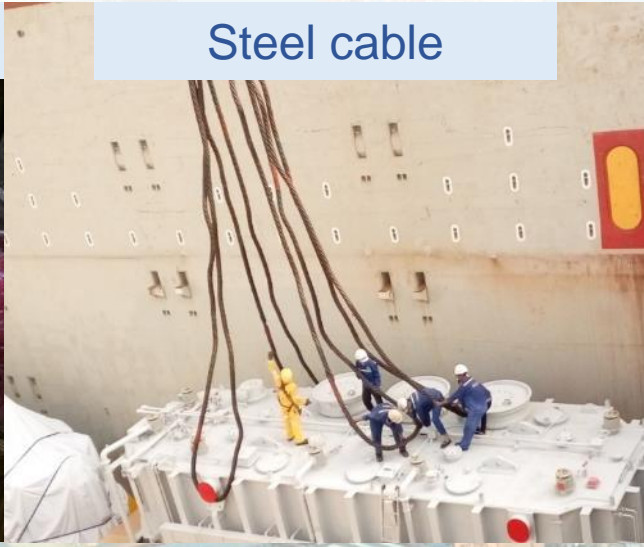
Specialized tools

- Specialized **polyester sling/steel cable** for handling equipment/steel coils.
- Specialized **bar hook** for joining crane (Up to 70T).

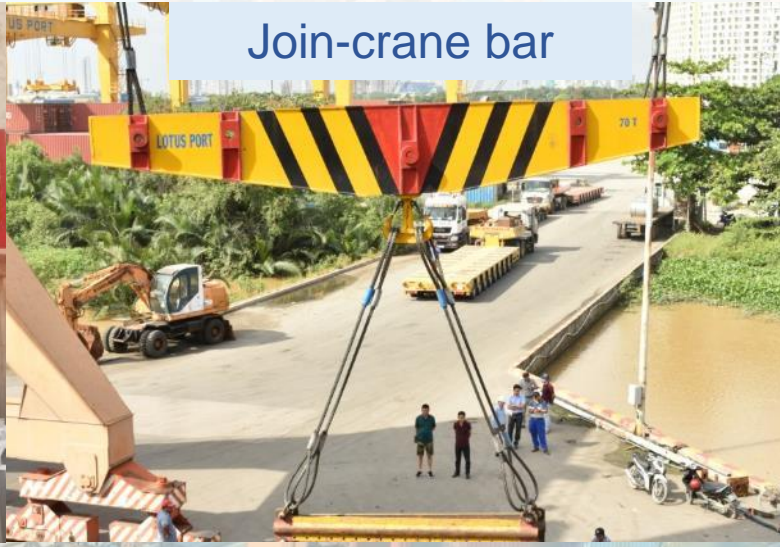
Slings



Steel cable



Join-crane bar



Rubber plated



Mobile crane (Up to 250 tons)



Floating Crane (Up to 230 tons)



Inhouse heavy load trailer.



24/7 Support

- Supporting all customers needs at anytime with Lotus Port 24/7 Support.



Partnership

- With the prominent strength at handling Equipment, Oversize & Overweight project; Lotus Port is proudly to be a main partner of various manufacturers among the country.



And more...



Contacts

- **LOTUS JOINT VENTURE COMPANY**
- **Add: 1A Nguyen Van Quy Street, Phu Thuan Ward, District 7, Hochiminh City**
- **Tel : (+ 84) 2838.730.146 / 2838.730.148 / 2838.730.334**
- **Fax : (+ 84) 2838.730.145 / 2838.730.147**
- **Email : info@lotusport.com**
- **Website : www.lotusport.com**



ALWAYS FOR CUSTOMERS' INTERESTS



THANK YOU



SEE YOU AGAIN