

# ONEWORKS:

We are a global design and consultancy firm offering integrated architecture, interior design and engineering services to clients around the world.

Dr. Claudia Palombo  
+971 502 950 788  
c.palombo@one-works.com

**One Works DMCC**  
15-03 JBC 2  
Jumeirah Lake Towers, Dubai

# ONWORKS:

EXPERIENCE AND CAPABILITY  
MIDDLE EAST AND AVIATION



2 We are a global design and consultancy firm offering integrated architecture, interior design and engineering services to clients around the world.

Drawing upon the wide range of skills and expertise of our people, we apply effective design solutions to create dynamic transport hubs for people and goods.

We believe in delivering innovative places in the best possible way through the latest techniques, technology and a suite of project support, technical support and design services.



Our experience is extensive, covering aviation, transportation, retail, leisure and commercial development sectors of the market. Projects range from large masterplans and new build developments to complicated refurbishments of existing buildings, with contract values ranging from €100,000 to over €200 million.

### HIGH-QUALITY DESIGN

Our design practice, primarily based in Italy, is guided by four key principles: Collaboration, Commitment, Innovation and Value. From this starting point, we've built an international reputation for the quality of our designs, our attention to detail and the strength of our delivery.

We're a team of diverse personalities, each with unique skills, years of experience and a passion for what we do. We communicate closely with our clients, developing a deep and holistic understanding of their needs. We also continually invest in technology and training, including BIM, to enhance the services we offer.

Over the years, we have grown long-term relationships with blue chip multinationals and small enterprises alike, across a wide range of sectors. These relationships, we believe, are a testament to the success of our unique and carefully-crafted approach.

### RESOURCES

In addition to the day-to-day management of the practice, our Managing Partners oversee the overall design quality on all projects and provide guidance to our experience Design and Engineering Team Leaders wherever necessary.

We work from different strategic locations across the globe, with our design head- quarters in Milan and offices in Singapore, London, Rome, Venice, Doha, Abu Dhabi, Dubai, Chennai and Bangkok. From these locations, our architects, interior designers, specialist consultants and engineers provide a flexible and stable approach to the design and delivery of projects worldwide.

### QUALITY AND ENVIRONMENT MANAGEMENT

The managing partners have always believed in the importance of Quality Management, Environment Management and Occupational Health and Safety Management within the company and across projects. The management systems in place are an integral part of our culture and are continuously expanded and improved upon. One Works is accredited to:

- ISO 9001 for Quality Management;
- OHSAS 18001 for Occupational H&S Management;
- and ISO 14001 Environmental Management.



We believe that every project should synthesise an Airport's unique needs with the aspirations of the wider stakeholder community, which is why our multi-disciplinary teams work together to combine their knowledge and expertise to provide integrated, sustainable design solutions.

## Architectural Design

Our design approach is based on an extensive understanding of diverse physical, environmental, historical and social conditions unique to Airport environments. Utilising BIM, we believe that successful projects are derived from a truly integrated approach to the design process, where the core disciplines are bound by creativity, innovation and a passion.

## Structural Design

As a multi-disciplinary practice, we offer a service for structural and civil engineering design, both as a stand-alone capability and as part of larger integrated design schemes. Using the latest technology, materials and construction techniques, we are able to overcome complex challenges on-time and on-budget.

## Airside & Landside Masterplanning

We believe the holistic creation of infrastructures and their surrounding area can be, if not more important, than a single structure. We provide sustainable masterplanning and urban design solutions that go beyond the initial terminal to not only meet the needs of travellers, but also the broader connections of cities and communities.

## Capacity Planning and Assessment

We provide capacity planning and assessment, analysis and capacity optimization services for all relevant airport system components considering aircraft and vehicle traffic, as well as passenger and baggage flows. Together with airports and stakeholders we help define cost effective and efficient solutions for an airport system to handle particular passenger and flight demand.

## Layout Analysis and Capacity Optimization

We provide capacity planning and assessment, analysis and capacity optimization services for all relevant airport system components considering aircraft and vehicle traffic, as well as passenger and baggage flows. Together with airports and stakeholders we help define cost effective and efficient solutions for an airport system to handle particular passenger and flight demand.



**Our dedicated team of aviation professionals working together with airport operators and carriers to deliver safe, efficient, sustainable airport operations, whilst retaining a focus on passenger experience.**


As one of the leading aviation design and consultancy firms, One Works is pleased to be supporting clients to manage the challenges introduced by the recent pandemic, maintain business continuity and ensure the health and safety of our communities, employees, colleagues and passengers.

With a strong background in airport planning, flow management, dynamic simulations and infrastructure design, we work hand-in-hand with airport operators and stakeholders to prepare and deliver strategies in all areas of airport operations. From developing long-term masterplanning strategies for managing capacity and commercial value, to optimizing existing assets on a tight budget, we are here to help.




One Works is proud to be ACI (Airports Council International) Gold Members, AOA (Airport Operators Association) Silver Members and regulation training course providers in the "Construction and Operation of Airport Infrastructure" Masters course at La Sapienza (Rome). One Works is also a key representative on the ACI Europe Facilitation and Customer Services Committee and the ACI Europe Technical and Operational Safety Committee.


**A holistic approach to Airport development**

- 


**REGIONAL ECONOMIC LINKS**

  - Datacentres
  - Retail destinations
  - Research & incubator facilities
- 


**URBAN CONNECTIVITY**

  - High-quality mass transit connections
  - Public place and spaces
  - Local active transport (walking and Cycling) facilities
- 

**TERMINAL FACILITIES**

  - High-quality mass transit connections
  - Public place and spaces
  - Local active transport (walking and Cycling) facilities
- 

**OPERATIONAL PERFORMANCE**

  - Efficient terminal design
  - Flexible capacity facilities
  - Effective ground-handling processes and facilities
  - Improved wayfinding
- 

**TERMINAL EFFICIENCY**

  - Flow management
  - Remote Check-in
  - Pre-clearance options
  - Self-service baggage systems





# AIRPORT MASTERPLANNING SELECTED EXPERIENCE



## PRINCE MOHAMMAD BIN ABDULAZIZ INTERNATIONAL AIRPORT (MED) MASTERPLAN

DESIGN FOR A NEW AIRPORT IN THE HOLY CITY OF MADINAH - PART OF A WIDER RENEWAL PROGRAM FOR THE OVERALL REGIONAL AND INTERNATIONAL SAUDI ARABIA AIRPORT NETWORK.

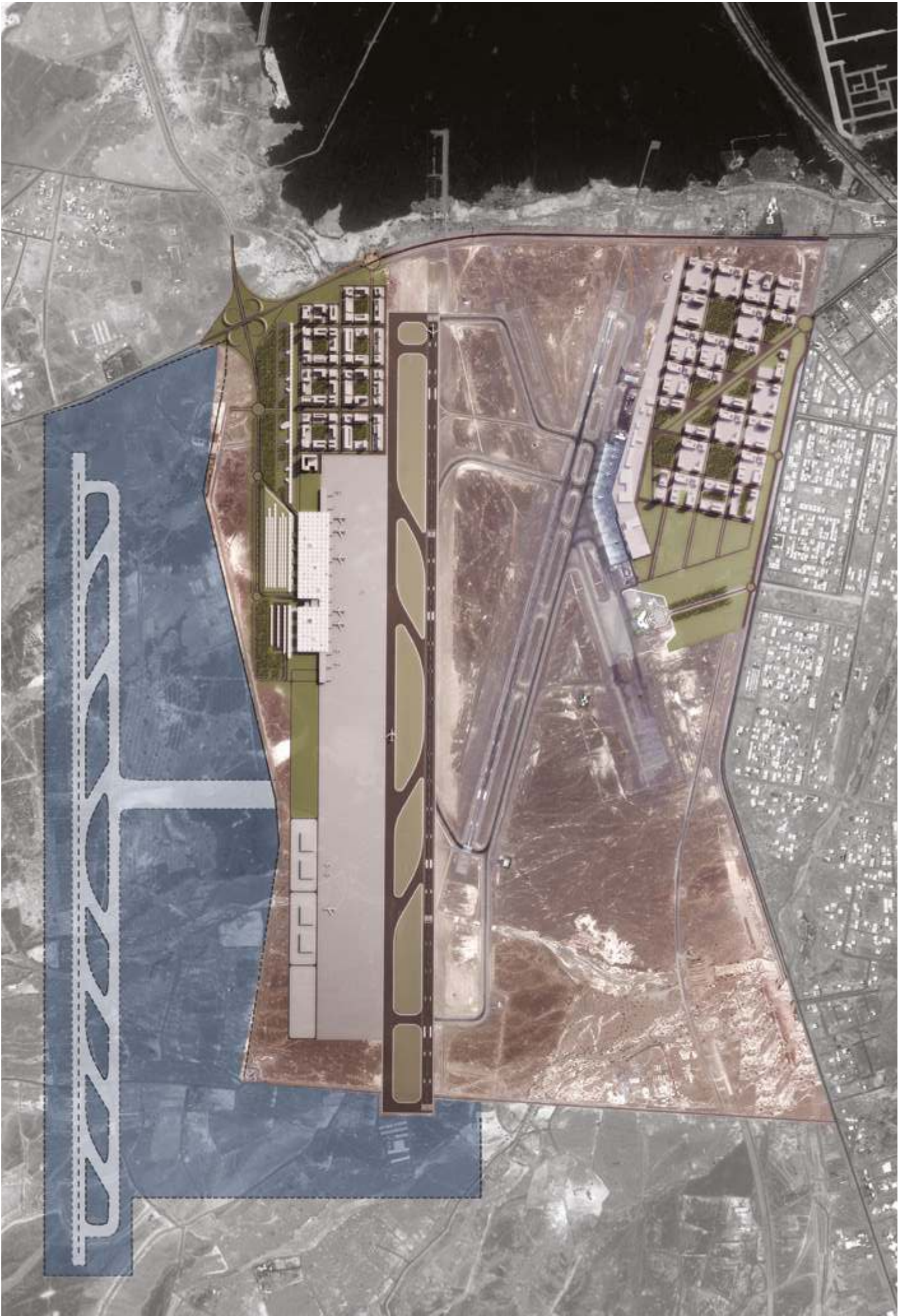
Foreshadowing a new airport in the holy city of Madinah is part of a wider renewal program for the overall regional and international Saudi Arabia Airport Network. The most important event in the territory is the Hajj pilgrimage; for which Madinah airport needs to be able to handle around eight million passengers a year. The current outdated terminal is unable to meet the increasing traffic demand; therefore, the construction of a new terminal at the opposite end of the current runway became necessary.

The final masterplan optimizes the airport's supporting infrastructure airport activity. It also offers the potential to duplicate the airport's capacity system, by developing a mirror image to the main access axis, a second terminal and a second runway.

- Date:** 2010 - 2011
- Location:** Madinah, Saudi Arabia
- Client:** Impregilo, Almbani General Contractor
- Services:** contractor's consultancy in tender process, masterplanning







## KING FAHD INTERNATIONAL AIRPORT (KSA) MASTERPLAN

A RECENT COMPETITION FOR DEVELOPMENT MASTERPLAN AND AIRPORT EXPANSION PROGRAMME FOR DAMMAM AIRPORT.

One Works has participated at the design competition for the new King Fahd International Airport of Dammam (KSA).

The design brief included the masterplan and fit-out of existing areas of the terminal which are currently Core&Shell and the extension of the new Domestic and International concourses.

The goal of the design proposal was to create a new image of the passenger terminal building with a new iconic identity and a strong "sense of place" based on local culture.

**Date:** 2018  
**Location:** Dammam, Saudi Arabia  
**Client:** DACO  
**Services:** Masterplan, Architecture, Engineering





## BERGAMO INTERNATIONAL AIRPORT (BGY) DEVELOPMENT PLAN

AMBITIOUS DEVELOPMENT PLANS FOR THE EXPANSION OF BERGAMO INTERNATIONAL AIRPORT TO SUPPORT A GROWING DEMAND OF APPROXIMATELY 13.8 MAP

In recent years, Bergamo International Airport has become more prominent within the European Market due to its position and the opportunities for growth.

The airport has recorded consistent growth in traffic volumes, primarily due to the rise of European routes operated by low-cost airlines reaching 6.5 million passengers in 2008 with a percentage increase, in just eight years, of 333%. It is anticipated that the expected requirements in 2030 will be almost 14 MAP.

To support these figures, the following objectives were identified for the upgrading and modernization of the airport:

- extend, with approximately the doubling of the current surface, the passenger terminal through gradual works with buildings positioned both east and west with respect to the existing terminal and with new volumes;

- equip the terminal with spaces dedicated to the passenger aligned to the service levels indicated by IATA for similar terminals;
- integrate the development of the air terminal in the road accessibility system, with the possibility, in the medium-long term, of a railway connection;
- expand the offer of commercial and catering activities in the land side and air side areas;
- renew the overall image, compromised by progressive and fragmented extensions, finding a line of continuity both with existing elements and through repeatable modules.

The design criteria aimed at the best functionality of the paths and spaces, the integration of the existing areas with the new extensions taking into account the gradual replacements, the renewal of the overall image with the enhancement of both internal and external spaces. The

operational characteristics of the airport, mainly used by low-cost traffic, have been the subject of in-depth analyzes to identify specific solutions, especially for the treatment of flows concentrated in time slots, offering acceptable levels of comfort with low personnel and management costs.

**Date:** 2008 - ongoing  
**Location:** Bergamo, Italy  
**Client:** SACBO  
**Services:** airport development, masterplanning  
**MAP:** 13.8 MLN



## ITALIAN AIRPORTS SYSTEM MASTERPLAN

A COMPREHENSIVE ANALYSIS OF ITALY'S NATIONAL TRANSPORT INFRASTRUCTURE AND FACILITIES FOR THE ITALIAN CIVIL AVIATION AUTHORITY

Italy is in fourth place in Europe in terms of traffic volumes and is the only country among the main European markets, which has recovered pre-crisis passenger traffic levels. The flow of passengers passing through the airports generates on the economy of the territories an estimated return of at least € 100 billion / year. Growth forecasts for the country indicate the possible doubling of traffic by 2030, about 300 million passengers, with an increase in international traffic in particular.

The National Airport Master Plan highlights the opportunities for the country to meet the development challenge by highlighting the existing critical issues, emerging needs, possible solutions, response methods, architecture of the network and the role of individual airports. For each of the themes explored, regulations and EU decisions, characterization of national air transport and of freight transport, intermodality, territory, environment, the Plan provides, in view of the related scenario, the vision and strategies to be adopted.

The Plan was based on the following key strategies:

- classification of the airports integrated with the structure of the European TEN-T network, which includes 33 national airports;
- increase in airport capacity in existing airports as an irreplaceable element to overcome the expected capacity crisis and give indispensable support to the country's economic growth;
- safeguarding the surroundings to the airports to allow the necessary expansion of the same;
- integrated planning with the territory, also to stimulate the development of synergies with public and private entities that operate near the airports;
- long-term environmental sustainability of airports as a contribution to national and European policies;
- strong focus on the construction

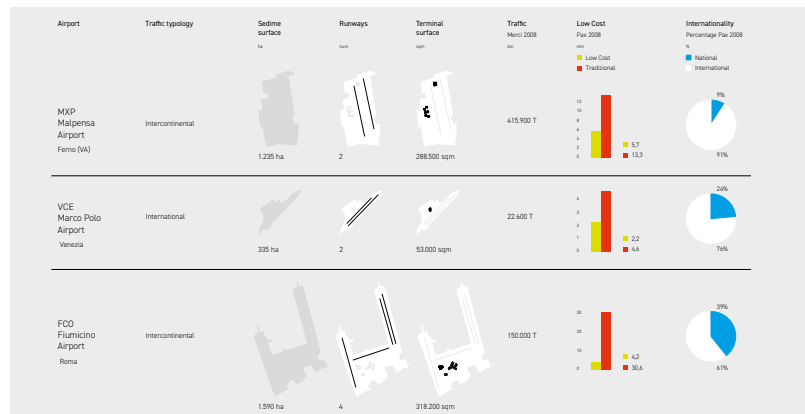
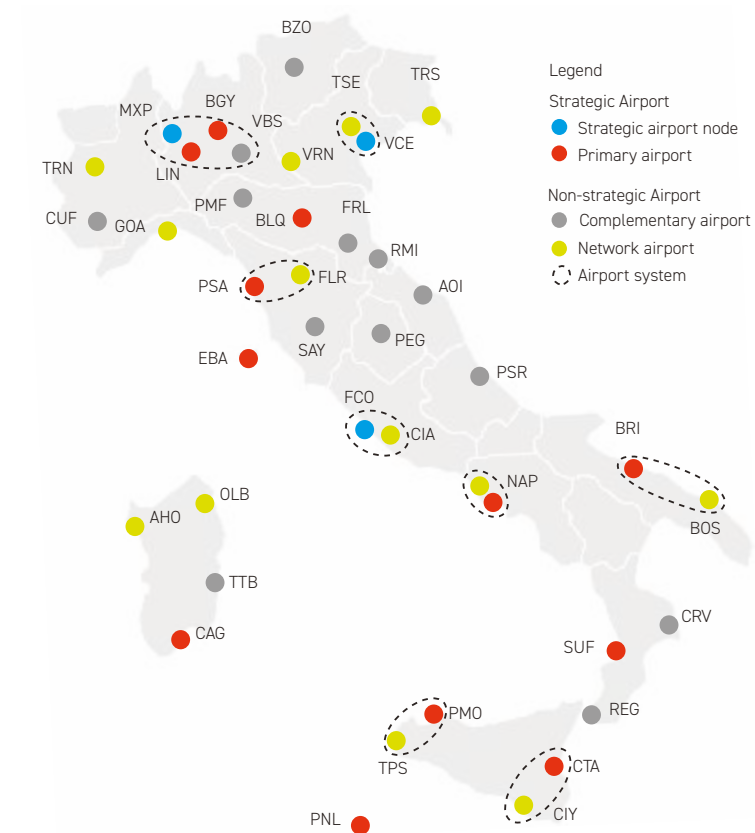


of railway works and connections to reach intermodal levels, now in deficit, also in support of environmental policies;

- limitation to the construction of new airports within the next twenty years;
- construction of only Viterbo airports in Lazio, to accommodate the traffic that will be relocated from Ciampino, and to Grazzanise, in Campania, to support developments that will not be compatible with Napoli Capodichino; (new airport to support the capacity)
- no closure of existing airports, but the indication that for airports not recognized by the market, today with little traffic, economic sustainability conditions that do not involve transfers of public resources for management are verified within the next three years; For these airports, appropriate forms of private capital involvement must be evaluated,
- including within integrated territorial development projects, without, however, commitment of costs to be paid by the tax payers;
- preparation by ENAC of simplified operational models that include airport services, to make the management of airports with limited traffic sustainable;
- activation of an institutional initiative of ENAC with Regions, other Bodies and territorial entities and Industry Associations, to assess dedicated forms and management methods for airports with limited traffic, which may be sustainable in relation to the type and level of traffic.

For the main airports, the Plan indicates the intervention strategies for the development of the national network, the priority works and the necessary interventions to strengthen and improve the services, defining the conditions to direct resources effectively in the territory. Particular attention is given in the Plan to the issue of accessibility to airports and intermodal connections, so that the territories can benefit the most from the development of the airports.

Finally, the Plan contains an "Action Plan" which defines the functional, strategic or primary profile for the main airports of the national network, in order to determine the priority of the interventions for the airports that have a strategic function in the network. For each functional profile, the type of service to be rendered and the



package of performance requirements to be fulfilled during the term of the Plan are defined, both for the air side and land side infrastructures and for the access infrastructures, rubber and iron. The Action Plan also identifies the cargo airports and airports whose traffic development, due to the constraints and existing relationships within the catchment areas, must be correlated to respond more effectively to the need of the territory.

**Date:** 2009 - 2011  
**Client:** ENAC (Italian Civil Aviation Authority)  
**Services:** accessibility studies, air traffic forecasting feasibility studies, masterplanning



## VENICE INTERNATIONAL AIRPORT (VCE) MASTERPLAN

DEVELOPMENT AND DELIVERY OF A STRATEGIC MASTERPLAN TO ACCOMMODATE TRAFFIC DEMAND CAPACITY UNTIL 2030 AND PROVIDE NEW INFRASTRUCTURES. 2010-2030



Marco Polo Airport has witnessed significant growth in the last few years with new routes to North America and the Middle East. The masterplan ensures traffic demand capacity until 2030, providing new infrastructures and related facilities within

The masterplan, co-financed by the European Commission within the TEN-T program, aims to upgrade Marco Polo Airport into a modern intermodal hub. The strategic masterplan features airside expansion with a second runway equipped for F code aircraft, and reserved space for the making of an integrated intermodal node and city airport. Viewed as a primary concern for the airport’s development, surface accessibility transport modes to enable the efficient interchange of air, road, rail and water traffic.

**Date:** 2005  
**Location:** Venice, Italy  
**Client:** SAVE  
**Services:** masterplanning, strategic planning, accessibility and intermodality  
**MAP:** 22 MLN



## U-TAPAO INTERNATIONAL AIRPORT (UIA) MASTERPLAN

CONCEPT MASTERPLAN AND AIRPORT TERMINAL DESIGN FOR AN AMBITIOUS PUBLIC-PRIVATE PARTNERSHIP (PPP) PROJECT IN A STRATEGIC AREA OF THAILAND.



One Works was recently appointed to develop an extensive concept masterplan to create one of the most innovative new airports and multi-modal transport hubs in Asia. Designs for the terminal building and airside facilities ensure the expansion of U-Tapao International Airport (UIA) can ultimately reach the 60-75 MAP required to meet demand in this rapidly growing market.

The PPP Project will provide the main anchor and pivot by which the Eastern Economic Corridor for Innovation (EECi) can achieve its full potential to bring new competitiveness and prosperity to Thailand. U-Tapao aims to

establish itself as the third main international airport in Thailand for business expansions, as well as to better facilitate the establishment of a Special Economic Zone in anticipation of the EEC expansion. In addition, it this will serve a passenger link to Don Muang International Airport and Suvarnabhumi International Airport, while simultaneously supporting growth as a regionally important aviation hub.

**Date:** 2018

**Location:** Rayong, Thailand

**Client:** Confidential

**Services:** Masterplanning, Architectural Design, BIM





## SALERNO INTERNATIONAL AIRPORT (QSR) MASTERPLAN

A NEW MASTERPLAN TO PROVIDE TO GROWTH IN PASSENGER TRAFFIC OF UP TO 3.5 MAP WITHIN THE NEXT TEN YEARS WITH THE AMBITION TO REACH APPROX. 5.5 MAP

An airport is a complex system whose adaptation and growth must be governed in an organic and harmonious way, with punctual programs and long-term prospects, in particular when, as in the case of Salerno, it is necessary to consider interventions aimed at adjustment of available operational capacity and enhancement of the levels of functionality and quality of service offered.

Following the new business plan, an update of the Airport Master Plan was necessary in relation to the new estimated traffic volumes. New measures are therefore envisaged to provide the Salerno Costa d'Amalfi airport with the necessary infrastructures to manage 3.5 MAP in the short term and 5.5 MAP in the long term.

The Master Plan provides a framework within which the airport itself can evolve and develop by defining a maximum perimeter of grounds and a maximum capacity in terms of aircraft, passenger and cargo movements. This plan will indicate the main construction phases as well as the implementation times within which, according to forecasts, they will have to be realized.

Although referring to a new traffic growth scenario, the update of the Airport Development Plan for Salerno Costa d'Amalfi Airport is still based on the guiding principles that characterize the development of airport infrastructures, namely:

- maintain a high level of service in line with the expected level of traffic growth;
- maximize project flexibility to be proactive to future scenario changes;
- minimize the risk of investment losses caused by changes in traffic growth levels;
- increase the infrastructure dedicated to connections and circulation to control the flow of passengers and improve safety levels in the entire area of the airport (aircraft parking areas, infrastructure for charter traffic, terminal 1, etc.);

**Date:** 2018  
**Location:** Salerno, Italy  
**Client:** Gesac  
**Services:** Masterplanning  
**MAP:** 5.5 MLN



## NAPOLI INTERNATIONAL AIRPORT (NAP) MASTERPLAN

17

THE SENSITIVE EXPANSION OF NAPLES INTERNATIONAL AIRPORT THAT RESPONDS TO RECENT TRAFFIC GROWTH AND EXPLORING OPPORTUNITIES FOR COMMERCIAL DEVELOPMENT



In recent years, Napoli Airport has recorded substantial growth between 5-10 million passengers a year to position it as one of Europe's "fast & furious" airports. The masterplan therefore represents an update of the existing Airport Development Plan with the aim of verifying and aligning the capacity of the airport system with the growth of passenger traffic.

The masterplan verified and assessed, in detail, the sizing of all the main components including: the new landside access roads; the relative passenger parking areas; the airside infrastructure and the passenger terminal.

The passenger terminal represents a key element in the configuration of the new masterplan of Naples and will see a significant increase in capacity thanks to the planned expansions of the boarding areas and other functional subsystems. As mentioned before, the main goal of the study was to achieve the maximum optimization of surfaces and operational processes of the passenger terminal,

following the IATA recommendations. In order achieved this, a great deal of attention was given to reduce the expansion volumes, in order to reduce the developments environmental impacts and economic investments.

Analysis of the new 'forecourt' was not only focused on the parking areas intended for loading and unloading passengers and baggage at the airport, but also considered the existing road infrastructures. This was to ensure that the qualitative analysis of the internal road traffic (drop-off / pick-up lanes) was considered as an impact to the broader analysis of the road systems connected to the city, which in the short term, will also be impacted by the completion of the new underground metro line.

Date: 2018  
Location: Napoli, Italy  
Client: Gesac  
Services: Masterplanning  
MAP: 12 MLN





## PISA INTERNATIONAL AIRPORT (PSA) MASTERPLAN

AN AMBITIOUS DEVELOPMENT MASTERPLAN TO SUPPORT GROWTH UP UNTIL 2025 AND INCREASE CONNECTIVITY TO THE WIDER REGION.



The project focuses on key issues for airport development such as intermodality, through the improvement of the Pisa airport-train station connection; accessibility and parking, through the strengthening of the entrance and distribution traffic of the airport and the rational distribution of parking; the gradual extension of the airport and the extension of the services connected to it necessary for the development of the airport; the construction of a new cargo area with a dedicated road system; environmental remediation of residential areas adjacent to airport grounds; the enhancement of the existing airside infrastructures in relation to the expected traffic and the mitigation of the impact of noise on the city.

**Date:** 2006-2012  
**Location:** Pisa, Italy  
**Client:** SAT  
**Services:** masterplanning  
**MAP:** 7.1 MLN



## LINATE AIRPORT CITY (LIN) MASTERPLAN

A DEVELOPMENT FOR A GROWING AIRPORT CITY THAT SEEKS TO EXPLORE TO KEY OPPORTUNITIES RELATING TO ACCESSIBILITY AND CITY REAL ESTATE DEVELOPMENT.



The Concept Masterplan bases itself on two design issues, accessibility/modality and city real estate development. They are, on one hand, part of the recent airport development plan submitted by the SEA to ENAC, and on the other, part of the strategies developed by the same SEA for Linate's modernization and upscaling as an "Airport City".

In order to clarify the Masterplan's scope of influence, in relation to SEA's programming needs, the two closely interconnected themes were subject to a preliminary investigation.

The Forlanini airport's modernization framework moves on a territorial scale within one of the most important Milanese urban regeneration context. The highly anthropic district on the city outskirts, today, is at the same time fully immersed in the green landscape of both the Forlanini and Idroscalo Park. These two

incredible presences bring forth potentials and opportunities, which dictate this complex infrastructure's adaption, aiming to govern the changes in an organic, harmonious, and timely manner.

Linate, therefore, more and more adherent to its role as a City Airport, can become, on a larger scale, part of a territorial "mending" program that foreshadows a continuous park system and natural landscape. An uninterrupted "green line" that runs through the airport compound, manifesting itself in different ways in diverse situations, connects two major urban parks, Forlanini Park and Idroscalo.

**Date:** 2012  
**Location:** Linate, Italy  
**Client:** SEA  
**Services:** masterplanning  
**MAP:** 10.6 MLN



## MALPENSA INTERNATIONAL AIRPORT MASTERPLAN

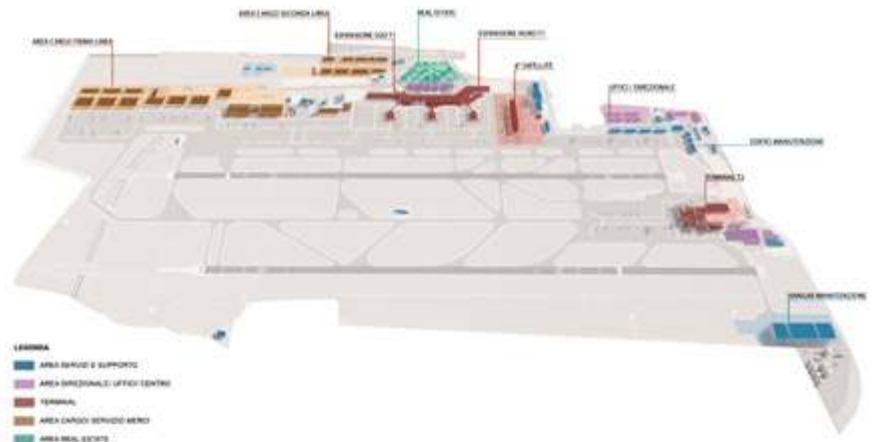
A COMPREHENSIVE MASTERPLAN FOR ITALY'S SECOND LARGEST AIRPORT TO SUPPORT A GROWING DEMAND OVER 30 MILLION PASSENGERS AND INCREASING FREIGHT ROUTES.

Currently, the airport primarily serves the Lombardy region (more than 20% of Italian GDP) and the entire Northern Italian Area, as well as communities in Swiss region of Canton Ticino and is home to two terminals, two runways and a dedicated cargo terminal.

Following detailed analysis of the wider aviation market and factors including historical data, position of the airport in the Italian network and data available on specific airlines operating at the airport (inc. share of international and domestic passengers, as well the legacy and low cost traffic), One Works developed a forecast for both passengers and freight movements and outlined a planning period of the masterplan is 2018-2035, with two main phases in between 2025-2030 to meet the anticipated 35 million annual passengers in 2035.

Based on the forecast, One Works continued to develop a detailed Capacity Study of all existing infrastructures and prepare a strategy that introduced new facilities and/or extension in order for the Airport to meet the requirements for the expected traffic growth. Building on One Works strength in transport planning and design, the Malpensa Masterplan also included opportunities for improving the existing intermodal connectivity, where both terminals are currently served by a railway system direct to Milan City Centre. The proposed masterplan also explores the option for future extension of the system with a regional Light Rail system and changes to improve the existing vehicle accessibility.

The proposed masterplan also include a range of opportunities for real estate development and non-aviation commercial functions, such as Hotel facilities, Commercial Offices, Leisure facilities, as well as Retail and Entertainment to serve visitors, staff and the local communities. One Works is currently working with the client and related stakeholders in order to get the necessary approvals for a wider expansion programme.



Date: 2018  
Location: Malpensa, Varese, Italy  
Client: SEA  
Services: Masterplanning, BIM  
MAP: 34 MLN

# AIRSIDE + LANDSIDE DEVELOPMENT SELECTED PROJECTS

## GIZ KING ABDULLAH BIN ABDULAZIZ AIRPORT

DETAILED CONCEPT DESIGN FOR THE NEW TERMINAL AT JAZAN INTERNATIONAL AIRPORT - AS PART OF A CONTRACTORS BID TO WIN THE PROJECT.

The new Jazan Airport will overlook the Red Sea about 700km south of Jeddah. The project distributes the terminal's principal functions on two main levels, arrivals on the ground floor and departures on the first floor. There will also be a mezzanine level dedicated to passenger arrivals by contact stand type aircrafts, for a total floor area of approximately 55.000mq.

A central body executed in reinforced concrete vaults characterizes the terminal architecture; it acts as a connective device between the two lobbies, the express check-in / departure on landside and boarding on the opposite side. The arched roofing solution allowed for the use of pillars to remain at a minimum, guaranteeing maximum spacial flexibility, and a strong architectural characterization of the interior spaces.

**Date:** 2012  
**Location:** Jazan, Saudi Arabia  
**Client:** Edge - Ahmed Zaidan Architects, GACA - General Authority Civil Aviation (ultimate client)  
**Floor Area:** 55.000 sqm  
**Services:** Architectural Design, Functional Layout, Structural Engineering



## MEHRABAD INTERNATIONAL AIRPORT (THR)

REFURBISHMENT AND EXTENSION, A DETAILED CONCEPT DESIGN FOR THE BUSIEST IRAN'S AIRPORT TEHRAN MEHRABAD INTERNATIONAL AIRPORT.



One Works was commissioned by SEA to develop a detailed concept design for Tehran Mehrabad International Airport (IATA: THR, ICAO: OIII). Although only domestic flights are served by this airport, in 2016 Mehrabad Airport handled over 16.5 million passengers and was the busiest airport in Iran in terms of passengers.

The design brief included the refurbishment of the CIP Terminal, as well as the construction of a new passenger terminal building and multi-storey car park to accommodate the expected capacity of 18-20 million passengers by 2020.

The main focus of the design was to improve the overall passenger experience

and to increase the terminal capacity in order to handle the expected traffic providing a complete new terminal dedicated to the arrivals and departures.

**Date:** 2018 - ongoing  
**Client:** SEA  
**Location:** Tehran, Iran  
**Services:** Architectural Design, Functional Layout, Landside Capacity Assessment, Pedestrian Simulation, Planning, Terminal Sizing  
**MAP:** 18 MLN





## KUWAIT AIRPORT NEW SUPPORT TERMINAL (KWI)

DESIGN OF A NEW SUPPORT PASSENGER TERMINAL THAT WILL PLAY A FUNDAMENTAL ROLE IN STRENGTHENING THE AIRPORT'S ACTIVITY.



The new passenger terminal has been designed to accommodate the estimated increase in airport traffic, and has been configured to connect the car parking facilities with the main terminal building via a sky bridge. The new satellite building has a wing spread arched roof with standing seam metal-sheeted roof and fully glazed curtain wall façades.

The building is organized on three floors: the ground level handles most functional systems; mezzanine 1 level handles departures, main commercial facilities and operational spaces; while mezzanine 2 hosts the arrival corridor.

**Date:** 2015 - 2016  
**Location:** Kuwait  
**Client:** UGCC, MCC  
**Services:** masterplanning and concept design  
**MAP:** 13 MLN



## ABHA INTERNATIONAL AIRPORT (AHB) II PHASE

DESIGN PROPOSAL FOR A NEW ADDITION TO THE SAUDI ARABIA AIRPORT NETWORK.

The Saudi Arabia Abha Airport design proposal foresees the terminal's 70.000 m<sup>2</sup> floor area organized on two main levels. The assignment, developed in partnership with RVA and EDGE architectural offices, include all phases of the project, from the preliminary master plan up to the executive design for tender, verifying and sharing with the Saudi authorities (GACA) the entire approval process.

During the concept phase, various design configurations evaluated operational needs and responsiveness to functional performance required by the client that among the various aspects envisaged the terminal realized in two different periods.

**Date:** 2012 - 2013

**Location:** Abha, Saudi Arabia

**Client:** Edge - Ahmed Zaidan Architects, RVA - Rafael Vinoli Architects JV, GACA - General Authority Civil Aviation (End Client)

**Services:** Masterplan Review Airside Design





## BARCELONA INTERNATIONAL AIRPORT (BCN) NEW TERMINAL

A NEW ICONIC AND VIBRANT TERMINAL FOR A CITY THAT HAS ITS ROOTS IN HISTORY, BUT LOOKS TOWARDS THE FUTURE.



The development project for Barcelona airport, which will allow up to 55 million passengers to be accommodated / managed, foresees a new satellite terminal connected to T1 through a people mover. The project starts from a careful analysis of the constraints that have determined the area of intervention, creating a terminal overlooking T1 and T2 on one side and the sea on the other and whose dimensions have been optimized to the maximum leaving room for a possible future expansion.

The external envelope was designed to efficiently respond to climatic and environmental conditions, so as to guarantee the best conditions of comfort for both passengers and airport workers operating in the building.



**Date:** 2020 - on going  
**Location:** Barcelona, Spain  
**Client:** Aena  
**Services:** Masterplanning, Architectural Design  
**MAP:** 55 MLN

## BRUXELLES SOUTH INTERNATIONAL AIRPORT (CRL)

COMPLETE REFURBISHMENT AND EXTENSION OF THE AIRPORT PASSENGER TERMINAL WITH SIMPLICITY AND EFFICIENCY FOR PASSENGERS INFORMING THE DESIGN.



Located in the city of Charleroi, Brussels South International Airport is the second busiest airport in Belgium, serving over 7.5 million passengers.

The new lounges are an extension to the recently built passenger terminal serving a range of low cost airlines and flights. Simplicity and efficiency informed the design to allow for the smooth flow of passengers. The long and low building enables passengers to board their flights efficiently. The design also enables future expansion, such as adding levels or strengthening the structure.

**Date:** 2010

**Location:** Charleroi, Belgium

**Client:** SAVE

**Services:** airside capacity assessment and layout configuration, architectural design, landside capacity assessment and layout configuration



## VENICE MARCO POLO INTERNATIONAL AIRPORT (VCE), LOT 1

PHASE 1 OF AN EXTENSIVE REFURBISHMENT AND EXTENSION PROJECT, FOR BOTH LANDSIDE AREA.



The Marco Polo Airport project comprises a phased extension program that will add more than 100,000 sq.m to the existing terminal to meet the most complex functional, architectural and constructive demands in the landside and airside areas, supporting more than 15 million passengers expected every year. This project will accommodate the required traffic capacity up until 2030, whilst respecting the fragile ecosystem of the neighbouring lagoon and the historic centre of Venice. The project will also provide greater comfort and accessibility to increased numbers of international passengers, offering spaces with higher quality standards.

In order to meet the highest European standards, security and infrastructure capabilities consistent with demand to

provide an adequate level of service, as well as environmental and economic sustainability, are key factors for the success of the strategic masterplan. The approach will enable the airport's complex infrastructure to be integrated with potential urban developments in a straightforward manner, offering the potential for even greater accessibility.

### LOT 1

Inaugurated on June 17, the new 11,000 sq.m extension creates a forecourt for the airport, improving accessibility to the terminal and connecting passengers to the dock via the new moving walkway; from here passengers can travel to Venice in style by Vaporetto or water taxi. The new forecourt, which will accommodate passengers arriving from all means of transport (including train journeys







in future development phases), is an 280-metre-long, fully glazed gallery that takes advantage of the 22-metre-wide interstitial space left available from the original complex between the terminal and the dual level road. This allows the new forecourt to offer generous, light-filled spaces, for departures and arrivals, with a lightweight roof structure that offers strategic flexibility.

The new distribution layout has been developed to bring together the functional requirements of the day-to-day terminal operations, but also to embrace the beauty of the spectacular views of the Venice lagoon, which embarking passengers receive from the commercial square. One Works has created a harmonious dialogue between the original airport buildings and the new extensions, ensuring that the iconic lagoon landmark is expanded sustainably, now and in the future.

**Date:** 2013 - ongoing  
**Location:** Venice, Italy  
**Client:** SAVE

**Cost:** 322 M Euro  
**Services:** Airside capacity assessment and layout configuration, architecture, cost consultancy, development phasing, functional layout, landside capacity assessment and layout configuration, MEP, structural engineering and BIM.  
**MAP:** 10 MLN





## VENICE INTERNATIONAL AIRPORT (VCE) PHASE 2 EXPANSION AND SOUTH PIER EXTENSION

PHASE TWO OF AN EXTENSIVE, 261 MILLION EURO, REFURBISHMENT AND EXTENSION PROJECT, FOR BOTH LANDSIDE AND AIRSIDE.

This project will accommodate the required traffic capacity up until 2030, whilst respecting the fragile ecosystem of the neighbouring lagoon and the historic centre of Venice.

The project will also provide greater comfort and accessibility to increased numbers of international passengers, offering spaces with higher quality standards. In order to meet the highest European standards, security and infrastructure capabilities consistent with demand for an adequate level of service, as well as environmental and economic sustainability are key factors for the success of the strategic masterplan.

**Date:** 2015 - 2017  
**Location:** Venice, Italy  
**Client:** Save Engineering  
**Cost:** 261 M  
**Services:** Architectural Design, BIM (Revit), Structural Design, Mechanical Design, BoQ, Programme Management and Phasing, BHS Design.  
**MAP:** 15 MLN



## BERGAMO IL CARAVAGGIO INTERNATIONAL AIRPORT (BGY)

A MODULAR APPROACH TO THE DEVELOPMENT AND EXTENSION OF ONE OF THE BUSIEST AIRPORTS IN ITALY TO INCREASE OPERATIONAL EFFICIENCY AND PASSENGER EXPERIENCE.

Bergamo has become the third most active airport in Italy and a recognized low-cost gateway for Milan. In this fast-growing scenario, attentive management of the functional demand has identified the need for development, whilst preserving airport operations, through diversifying revenues and the introduction of commercial spaces.

As part of the overall re-design and extension of the Orio Passenger Terminal, One Works also reexamined the shopping experience at the Airport. While introducing or replacing 12.000 sqm of GFA, high priority was given to retail and a new food court, increasing ceiling heights and opening vistas onto the surrounding landscape while bringing in great quantities of natural light

**Date:** 2006 - 2015

**Location:** Bergamo, Italy

**Client:** SACBO

**Services:** architecture, cost consultancy, development phasing, mep, structural engineering, terminal sizing, site supervision.

**MAP:** 15 MLN





## RIGA INTERNATIONAL AIRPORT (RIX) EXPANSION

REFURBISHMENT AND EXTENSION OF THE BALTIC STATES LARGEST AIRPORT (7 MAPS) SERVING THE CAPITAL OF LATVIA TO INCREASE CAPACITY TO 12 MILLION PASSENGERS PER YEAR



Serving the capital of Latvia, Riga International Airport is the largest airport in the Baltic states serving approx. 7 million passengers per year with direct flights to 106 destinations. With growing capacity demand for the region and the need for facility upgrades, One Works has been appointed to design the passenger terminal extension to serve up to 12 MAP.

The new terminal extension will provide a gross area of circa 15.000 m<sup>2</sup> and sensitively integrated with the original 1973 soviet building to provide a new landside façade of the

airport. New Departures and Arrivals halls, check-in and baggage claim facilities will provide an increase in both operational and public spaces to create a more positive experience for staff, airlines and customers travelling through the airport.

**Date:** 2018 - ongoing

**Client:** RIX

**Location:** Riga, Latvia

**Services:** Architectural Design, Functional Layout, Landside Capacity Assessment, Pedestrian Simulation, Planning, Terminal Sizing

**MAP:** 12 MLN

## U-TAPAO INTERNATIONAL AIRPORT (UTP) EXPANSION

CONCEPT DESIGN FOR AN AMBITIOUS PRIVATE PUBLIC PARTNERSHIP PROJECTS TO EXPAND U-TAPAO AIRPORT AND ACCOMMODATE UP TO 60-75 MAPS



One Works was recently appointed to develop an extensive concept masterplan to create one of the most innovative new airports and multi-modal transport hubs in Asia. Designs for the terminal building and airside facilities ensure the expansion of U-Tapao International Airport (UIA) can ultimately reach the 60-75 MAP required to meet demand in this rapidly growing market.

The PPP Project will provide the main anchor and pivot by which the Eastern Economic Corridor for Innovation (EECi) can achieve its full potential to bring new competitiveness and prosperity to Thailand. U-Tapao aims to establish itself as the third main international airport in Thailand for business expansions, as well as to better facilitate the establishment of a Special Economic Zone in anticipation of the EEC expansion.

**Date:** 2018

**Location:** Rayong, Thailand

**Client:** Confidential

**Services:** Masterplanning, Architectural Design, BIM



## SEA PRIME MALPENSA - BUSINESS TERMINAL

A NEW VIP TERMINAL TO SUPPORT THE INCREASING NUMBER OF HIGH-END BUSINESS TRAVELLERS - OFFERING PASSENGERS THE ULTIMATE TRAVEL EXPERIENCE.



Milan–Malpensa Airport is the largest international airport in the Milan metropolitan area in northern Italy and now handles over 22 million passengers a year. In order to manage the large increase in business travellers, One Works has been asked to design a new state-of-the-art Business Terminal with two key objectives: Enhance the travellers experience for high-end business customers and optimize existing operations to support the introduction of the new terminal.

The building is a compact volume and the presence of the new terminal from both the ground and in flight. The building is covered in panels of painted aluminum sheets with a 'mother of pearl' gray to provide a unique glossy and mirroring effect. This also provides a contrast with the dark color of the external covering to give more light to the entrances for welcoming passengers

**Date:** 2017  
**Location:** Malpensa, Varese, Italy  
**Client:** SEA Prime  
**Services:** Architectural Design, Interior Design, BIM



## ROMA URBE AIRPORT - ENAC ACADEMY

DESIGN PROPOSAL FOR AN EFFICIENT AND SUSTAINABLE NEW TRAINING FACILITY FOR THE ITALIAN CIVIL AVIATION AUTHORITY (ENAC)



The project area, about 4 Ha, is located at the extreme north of the Rome Urbe airport perimeter.

The program at the base of the new flight academy project involves the construction of a series of classrooms for teaching (10 of about 20 seats each), an auditorium (about 200 seats), laboratories, services, support spaces, administrative offices, a library / media library, a cafeteria and a large number of parking lots.

The functions listed above are organized within a building of approximately 4,000 square meters, near which an additional area has been identified for a possible future expansion to provide for the construction of residences for students.

**Location:** Rome, Italy  
**Client:** Enac  
**Area:** 4.000 sqm  
**Services:** Concept Design





## NAPLES AIRPORT (NAP) NEW CARGO TERMINAL

DESIGN AND DELIVER A NEW CARGO TERMINAL TO SUPPORT THE GROWING OPERATIONS AT CAPODICHINO INTERNATIONAL AIRPORT OF NAPLES.



One Works was appointed to design and deliver a new Cargo Terminal to support the growing operations at Capodichino International Airport of Naples. The new terminal comprised of two key activities

- Design and construction of a new 2,600 sqm goods building, following the demolition of the existing Aeroclub and industrial buildings.
- The complex restructure and refurbishment of an existing building that is soon to be occupied by DHL.

On the ground floor of the new building, the functional layout has been designed to create greater efficiency for all handling operations of goods in transit, as well as the flow of airport personnel. The loading and unloading operations in the landside area take place on two sides of the new building, where the stalls of the vehicles are planned. The airside front of the building, comprises of the main exits for operation vehicles. The first floor now provides over 1,000 sqm of commercial offices space, as well as amenities to

support the needs of airport staff. Redevelopment of the existing 3,250 sqm building was designed to increase the operational capacity, whilst ensuring greater flexibility in the use of space on the ground floor. The project also included all associated with civil and plant engineering works and the implementation of technologically advanced solutions aimed at introducing a level of automation to various phases of the process, including the necessary sorting systems and specialist systems, as well the managing the security level of airport staff. The project also plans to build a new office facility on the first floor to provide approx. 500 sqm.

**Date:** 2018  
**Location:** Naples, Italy  
**Client:** GESAC  
**Floor Area:** 2.600 m2  
**Services:** Preliminary Design, Detailed Design



## WROCLAW-COPERNICUS AIRPORT (WRO) HANGAR

DESIGN AND ENGINEERING FOR A NEW AIRSIDE BUILDING ABLE TO ACCOMMODATE MULTIPLE AIRCRAFT FOR MAINTENANCE.

Development of a new building intended as a hangar for use by Ryanair aircraft maintenance. Part of the design brief was to ensure the building was large enough for two aircraft to be worked on at a time.

The project also included the airside works, external accommodation external and connection to subservices, as well as design of the parking areas and external oil and gas storage.

The project also included the extension and reconnection to the main power square in rigid paving between the hangar and the existing apron.

**Date:** 2015 - 2017

**Location:** Wroclaw, Poland

**Client:** Ryanair

**Services:** detailed design, structural engineering and site supervision





## RYANAIR HANGAR AT BERGAMO INTERNATIONAL AIRPORT (BGY)

DESIGN, ENGINEERING AND CONSTRUCTION SUPERVISION OF A NEW AIRCRAFT MAINTENANCE HANGAR TO ACCOMMODATE GROWING DEMAND



The construction of a new aircraft maintenance hangar, approximately 50 x 44 m. within the Bergamo airport area, foresees an all in one maintenance management facility. The steel structured, insulated sandwich paneled roof building is equipped with complete MEP systems.

**Date:** 2015  
**Location:** Bergamo, Italy  
**Client:** Airside Capacity Assessment and Layout Configuration, Airside Design, Civil Engineering, Concept Design, Cost Consultancy, Functional layout, MEP, Program Management, Project Management, Seismic Studies, Site Construction Supervision, Structural Engineering





## TAXIWAY REFURBISHMENT AT NAPLES INTERNATIONAL AIRPORT (NAP)

THE ADAPTATION OF TAXIWAY TN ENVISAGED THE COMPREHENSIVE REQUALIFICATION AND EXTENSION OF THE EXISTING INFRASTRUCTURE TO ACCOMMODATE A DEMAND OF 9M MAP.

The adaptation of Taxiway TN envisaged the deep requalification and extension of the current infrastructure, according to the EASA, to make it compatible for operations with aircrafts of code D.

The extension of the Taxiway, plans to widen in the southern part, adapting both geometries with the existing infrastructures and the longitudinal and transversal slopes, as well as a total requalification of existing floors, of the AVL systems and of the rainwater collection network. The project also included the construction of a new section of Perimeter road along the Military border, to allow a correct management of vehicle traffic in the direction of Apron 2 and Piazzale Militare.

The assignment includes the design of the following infrastructures:

- New Pavings (Taxiway, shoulder and service roads);
- Vertical and horizontal signs
- Adaptation and implementation of the existing AVL system
- Meteorological water disposal system

A key role on this project was to oversee works by the contractor to ensure a high level of quality was maintained and that method statements were adhered to.

**Date:** 2015

**Location:** Napoli, Italy

**Client:** GESAC

**Services:** Concept and detailed design for regulatory compliance and construction design for the Apron extension.



## MALPENSA AIRPORT (MPX) - WAREHOUSING NEW CARGO CITY FACILITIES AND MASTERPLAN

DESIGN OF A NEW CARGO WAREHOUSE AND ASSOCIATED OFFICES FACILITIES FOR THE INTERNATIONAL FREIGHT TRANSPORT COMPANY, FEDEX.

As part of a wider development plan, the new 'Cargo City' involves the complex development to two key macro-activities. The first was development of the external areas surrounding the main building which is bound by a customs enclosure on the east side along the demarcation between both the land-side and air-side areas, and by an ordinary fence along the demarcation with the external urbanization works.

The second, was design of the new 16,800 sqm rectangular-shaped building with an average height of about 16m for a total development of 265,000 cubic meters. The new warehouse provides 12,000 sqm of surface area dedicated to goods storage and 4,800 sqm of dedicated commercial offices space.

**Date:** 2014 - 2016  
**Location:** Malpensa, Italy  
**Client:** SEA  
**Floor Area:** 16.800 m2  
**Cost:** 35.5 MLN Euro  
**Services:** Preliminary Design, Final Design, Detailed Design, BIM



## RUNWAY EXTENSION AT BRESCIA MONTICHIARI AIRPORT (VBS)

NEW DEVELOPMENT FOR BRESCIA MONTICHIARI AIRPORT TO INCREASE PRODUCTIVITY AND ACCOMMODATE GROWING DEMAND FOR THE GEOGRAPHICALLY SIGNIFICANT AIRPORT

The Brescia Montichiari Gabriele D'Annunzio Airport is an emblematic case of an airport infrastructure suffering from low productivity, which nevertheless retains high strategic potentials for its geographical position and elevated territorial interconnectivity level.

The renovation will also interest the airside infrastructures serving both cargo and passenger traffic. Special attention is given to environmental remediation and the developing phases.

**Date:** 2014

**Location:** Brescia, Italy

**Client:** Aeroporti del Garda

**Services:** Accessibility Studies, Airport Cities Planning, Accessibility Studies, Preliminary Design





## APRON REFURBISHMENT AND RUNWAY END SAFETY AREA EXTENSION AT PANTELLERIA AIRPORT (RESA)

ADAPTATION AND EXPANSION OF THE AIRCRAFT APRON TO BE IMPLEMENTED TO MEET THE NEEDS OF BOTH THE ADAPTATION AND EXTENSION WORK ON THE "RUNWAY END SAFETY AREA



The adjustment of the aircraft apron and the construction of the new riser is structured so as to satisfy in safety conditions the need for maneuvering and parking of aircraft operating on the Pantelleria airport, completing the existing pavement over all the space available in the area between the runway, the passenger terminal and the fire brigade unit. The paving will be extended to the areas east and west of the existing square up to the airport borders; upon completion of the works, the parking area will change from the current 12,000 square meters to a total of 43,000 square meters.

Adjustment interventions and extension of the "Runway End Safety Area" (acronym RESA) - "End of Runway Safety Area" located at head 26 of the RWY 08/26 runway at Pantelleria Island (Trapani) ); the work is aimed primarily at increasing the operational safety level of the runway 08/26, extending

the RESA (safety area beyond the end of the runway) in warhead 26 from the current 90 m to 180 m, in compliance with the current ENAC Regulation for the Construction and Operation of Airports (2nd Edition of 10/21/2003 - 5th Amendment of 09/23/2008). Moreover, from the operational point of view, the benefit of being able to restore the original position of the THR 26 threshold (having been penalized at the time to allow the presence of the current 90 m YIELD) will be obtained.

The interventions in the project, identified with the ENAC-PN-15 sheet, fall within the broader program of works aimed at strengthening the Pantelleria Airport.

**Date:** 2010

**Location:** Pantelleria, Italy

**Client:** Enac

**Services:** Detailed Design, Construction Supervision and Safety coordination



# CONSULTANCY SUPPORT SELECTED PROJECTS

## GIZ KING ABDULLAH BIN ABDULAZIZ AIRPORT

THE NEW JAZAN AIRPORT WILL OVERLOOK THE RED SEA ABOUT 700KM SOUTH OF JEDDAH.



The new Jazan Airport will overlook the Red Sea about 700km south of Jeddah. The project distributes the terminal's principal functions on two main levels, arrivals on the ground floor and departures on the first floor. There will also be a mezzanine level dedicated to passenger arrivals by contact stand type aircrafts, for a total floor area of approximately 55.000mq.

A central body executed in reinforced concrete vaults characterizes the terminal architecture; it acts as a connective device between the two lobbies, the express check-in / departure on landside and boarding on the opposite side.

The arched roofing solution allowed for the use of pillars to remain at a minimum, guaranteeing maximum spacial flexibility, and a strong architectural characterization of the interior spaces.

The layout dedicates particular attention to movement flows, passengers and goods, and their relationship with the different subsystems operating on the definition of public spaces, retail areas and F & B activities, to ensure high quality standards and appropriate level of services.

**Date:** 2012

**Location:** Jazan, Saudi Arabia

**Client:** Edge - Ahmed Zaidan Architects, GACA - General Authority Civil Aviation (ultimate client)

**Floor Area:** 55.000 sqm

**Services:** Functional Layout, Structural Engineering



## JED JEDDAH KING ABDULAZIZ INTERNATIONAL AIRPORT: CONSULTANCY

### CONTRACTOR CONSULTANCY FOR THE JEDDAH AIRPORT

One Works as general due diligence advisor assisted JV contractor during the tender preparation. The principle tasks undertaken concerned tender analysis and documentation control before submission. One Works also prepared the preliminary BOQ and the parametric cost estimation.

**Date:** 2009

**Location:** Jeddah, Saudi Arabia

**Client:** Impregilo Spa

**Services:** Contractor's Consultancy in Tender Process, Risk Assessment



## LEONARDO DA VINCI - FIUMICINO INTERNATIONAL AIRPORT

FUNCTIONAL AND OPERATIONAL ANALYSIS TO SUPPORT CHANGES IN THE MARKET REGARDING GROUND-HANDLING SERVICES, AS WELL AS RISK ASSESSMENT AERONAUTICAL STUDIES SUPPORTING DESIGNING AND ENGINEERING DECISIONS.

One Works carried out a functional and operational analysis in support of a request for market limitation regarding ground-handling services. Through a simulation model and operations impact analysis of investment plans operations, a Risk Assessment quantified the risk level generated by airport handlers and vehicle flows. The Civil Aviation Authority approved this methodology for use at other airports.

One Works offered specialized consulting concerning the European Aviation Safety Agency (EASA) for the recent Commission Regulation n.139/2014 implementation that introduces new infrastructure, organization and operation requirements. Recertification is mandatory for all European airports by national authorities according to common requirements and One Works is one of the major specialists today, both for the regulatory as well as technical aspects.

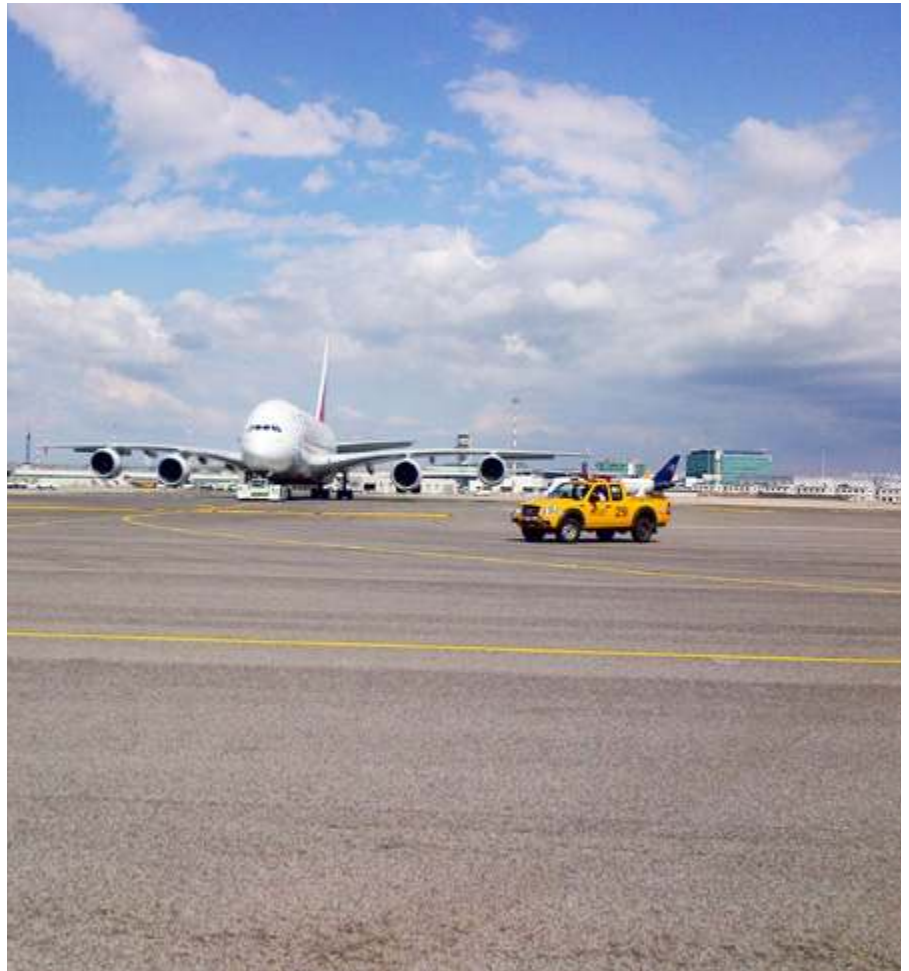
One Works advised on in Risk Assessment Aeronautical Studies to support design and engineering decisions, used to demonstrate compliance in Europe and internationally. In particular, Bird Strike analysis were a major part of an aeronautical study and risk assessment for the installation of a wild life strike hazard reduction system.

**Date:** 2013

**Location:** Rome, Italy

**Client:** AdR (Aeroporti di Roma)

**Services:** Ground handling operational consultancy; EASA Aerodromes Rules



**ANALYSIS OF:**

- Operative Procedures
- Safety Management System
- Updated Cartography
- Airport Regulation
- Apron Management Service
- Investments Plan



**VIDEO SURVEY:**

- 14 FCO police fixed cameras
- 2 movable cameras
- 465 Hours of tapes



**AIRSIDE SURVEY:**

- 25 km of apron

## SELECTED CONSULTANCY EXPERIENCE



### TRN Turin International Airport

2015, Turin, Italy  
Client: SAGAT  
Services: airside infrastructure risk assessment and EASA regulation compliance advisory.



### TSF Treviso International Airport

2014 - 2017, Treviso, Italy  
Client: Aertre  
Services: EASA regulation compliance advisory & Four-year plan for infrastructural investments, quality and environmental sustainability.



### PSA Pisa International Airport

2010 - 2012, Pisa, Italy  
Client: SAT  
Services: airport management consultancy



### GRU São Paulo Guarulhos Airport

2011 - 2012, Sao Paolo, Brazil  
Client: Impregilo, Ecorodovias, Fraport  
Services: consultancy in tender process



### CTA Catania Fontanarossa Airport

2009 - 2011, Catania, Italy  
Client: SAC  
Services: TEN-T programme evaluations



### GOA Genova International Airport

2014 - ongoing, Genova, Italy  
Client: Aeroporto di Genova  
Services: TEN-T programme evaluations; EASA regulation compliance advisory; Four-year plan for infrastructural investments, quality and environmental sustainability.





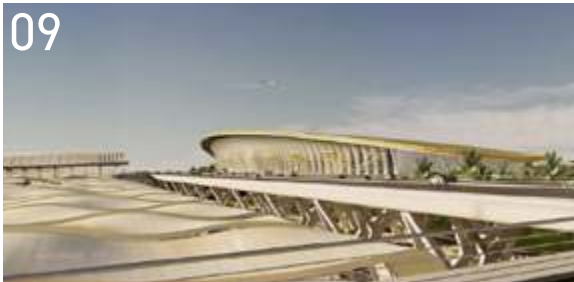
## FCO Fiumicino Leonardo da Vinci International Airport

2013, Rome, Italy  
Client: ADR  
Services: EASA regulation compliance advisory and ground handling operational consultancy



## OLB Olbia Costa Smeralda Airport

2014 - ongoing, Olbia, Italy  
Client: Geasar  
Services: EASA regulation compliance advisory and ground handling operational consultancy



## JED King Abdulaziz International Airport

2010, Jeddah, Saudi Arabia  
Client: Impregilo, Altabani General Contractor  
Services: technical and economical due diligence, consultancy in tender process



## BGY Il Caravaggio International Airport

2010 & 2015, Bergamo, Italy  
Client: SACBO  
Services: RWY strip 10/28 risk assessment; TEN-T programme evaluations; Four-year plan for infrastructural investments, quality and environmental sustainability



## VCE Marco Polo International Airport

2016 - 2017, Venice, Italy  
Client: SAVE  
Services: EASA regulation compliance advisory; TEN-T programme evaluations; ground handling operational consultancy



## NAP Naples International Airport

2016 - 2017, Naples, Italy  
Client: GESAC  
Services: EASA regulation compliance advisory and ground handling operational consultancy

## OTHER MIDDLE EAST RELEVANT EXPERIENCE

## RIYADH METRO WESTERN STATION

PART OF THE NEW RIYADH METRO SYSTEM - OMRANIA'S ICONIC WESTERN STATION DEMONSTRATES A DESIGN REFLECTIVE OF LOCAL CULTURE AND HERITAGE WITH A LANDMARK QUALITY.

Western Station is one of four Iconic Stations of the new Riyadh Metro. The design proposal, for this remarkable 110.000 m2, aims to be a catalyst for urban renewal, demonstrating a design reflective of local culture and heritage with a landmark quality.

A new urban "crossroad" that will host an above ground Metro Station, Bus Station, underground Park & Ride facility, a Market, Mosque and vast public plaza.

Important part of the intervention is the Market. The main goal of the market is to create a powerful

engine for economic, community, and agricultural development that would fill the Market with successful and distinctive owner-operated private businesses that represent the unique character and culture of the region, while meeting it citizen's everyday shopping needs.

**Location:** Riyadh, Saudi Arabia  
**Client:** CWG JV (Salini-Impregilo, Larsen & Toubro, and Nesma)  
**Services:** architecture, civil-structural-MEP engineering, project management, cost consultancy.  
**With:** CREW and Omrانيا  
**Status:** On Site





## RIYADH METRO DOWNTOWN STATION

DESIGNED BY SNØHETTA, THE QASR AL HOKM DOWNTOWN METRO STATION WILL SOON BECOME ONE OF THE MAIN FOCAL POINTS OF THE NEW RIYADH METRO SYSTEM.



Designed by Snøhetta

The North-South and East-West lines' orientation makes it a central hub within the overall Metro system. The design proposal consists of a vast public plaza, mosque, monumental entrance, three story parking facility and underground connections to an off-site plaza.

The station itself is made up of a urban scale public concourse area, retail activities and offices, ticketing facilities and access points to the two intersecting metros, the Blue Line spanning from North to South and the Red line spanning from East to West. The building stands as an icon in virtue of its large stainless steel canopy that, besides providing abundant shaded areas, channels daylight into the metro station and characterize the internal architecture.

The interior is characterized by large spaces and a sense of airiness; it receives indirect daylight down to all levels in virtue of the iconic concave roof. Within this unifying cone element - at the bottom of the station - there lies a wonder garden. An unexpected presence, which provides to the visitors comfort and wellness, and underlines a direct link with the exterior by way of vast slabs openings at every level.

**Location:** Riyadh, Saudi Arabia  
**Client:** CWG JV (Salini-Impregilo, Larsen & Toubro, and Nesma)  
**Services:** architecture, civil-structural-MEP engineering, project management, cost consultancy  
**With:** CREW and Snøhetta  
**Status:** On Site



## KING ABDUL AZIZ ROAD (KAAR) URBAN DEVELOPMENT PROJECT AND RETAIL STRATEGY

A SIGNATURE URBAN DEVELOPMENT PROJECT PROVIDING CONNECTIVITY TO THE AL HARAM A LONG GRAND PEDESTRIAN BOULEVARD.



The King Abdul Aziz Road (KAAR) is located in the Holy City of Mecca, at the heart of the Islamic culture and its religion. The project comprises over 1.2 million square metres of new development articulated by a central pedestrian boulevard leading to Al Haram Mosque.

The new KAAR development is a signature urban development project providing connectivity to the Al Haram a long Grand Pedestrian Boulevard, flanked by hotels, commercial and retail facilities, residential buildings, car parking, public spaces and public amenities to support religious, social and commercial activities to Hajj and Umrah pilgrims and other visitors and local residents.

As experts in dealing with crowded spaces, One Works' leadership and expertise has led the design to respond successfully

not only to Mecca Municipality's design codes, but also to the highest international standards, particularly with regards to the public realm of the entire central pedestrian boulevard and the 100-Ha plaza.

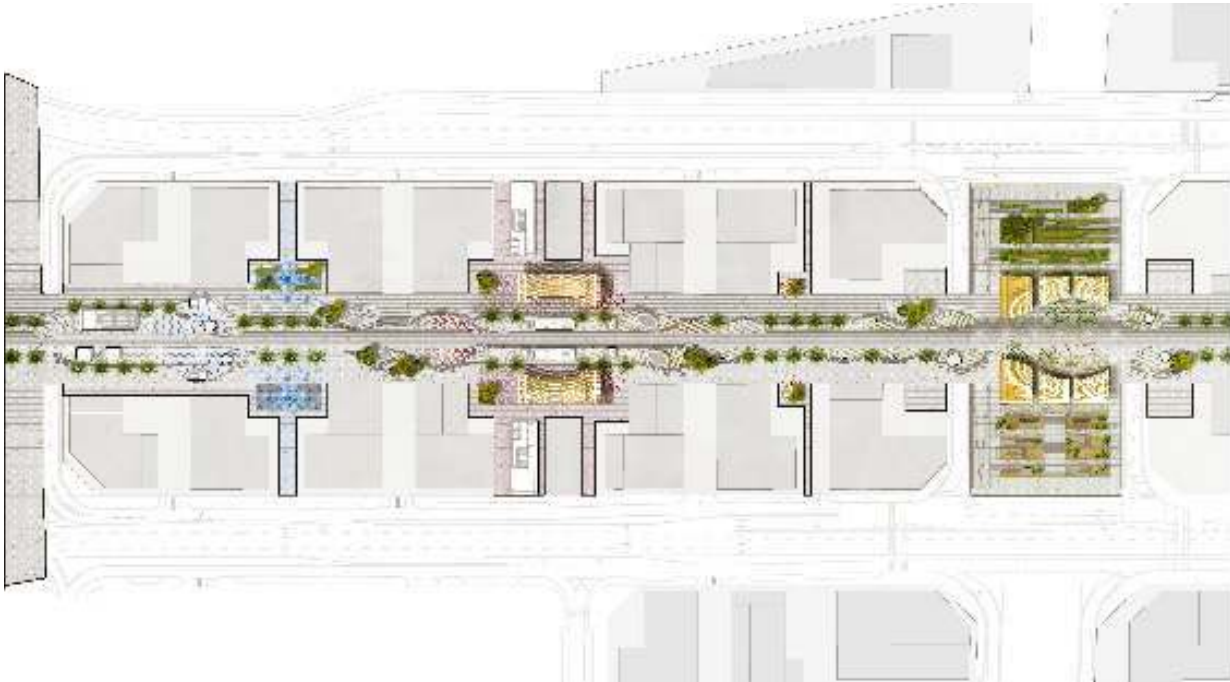
One Works is also leading the functional architectural layout and passenger dynamics simulations for two metro stations, and architectural detailed design for four underground car parks (10,000 parking spaces).

**Date:** 2016 - on going

**Location:** Makkah, Saudi Arabia

**Client:** Confidential

**Services:** Functional layout, Parking Design, Pedestrian Simulation, Masterplanning, Transport Planning and Urban Design





## DOHA METRO RED LINE NORTH STATIONS

DELIVERY OF A NUMBER OF EXCEPTIONAL METRO STATIONS THROUGH HIGH LEVEL ARCHITECTURE, ADVANCED INSTALLATION TECHNIQUES AND UNIQUE INTERIORS THAT ADOPT THE FINEST QUALITY MATERIALS.



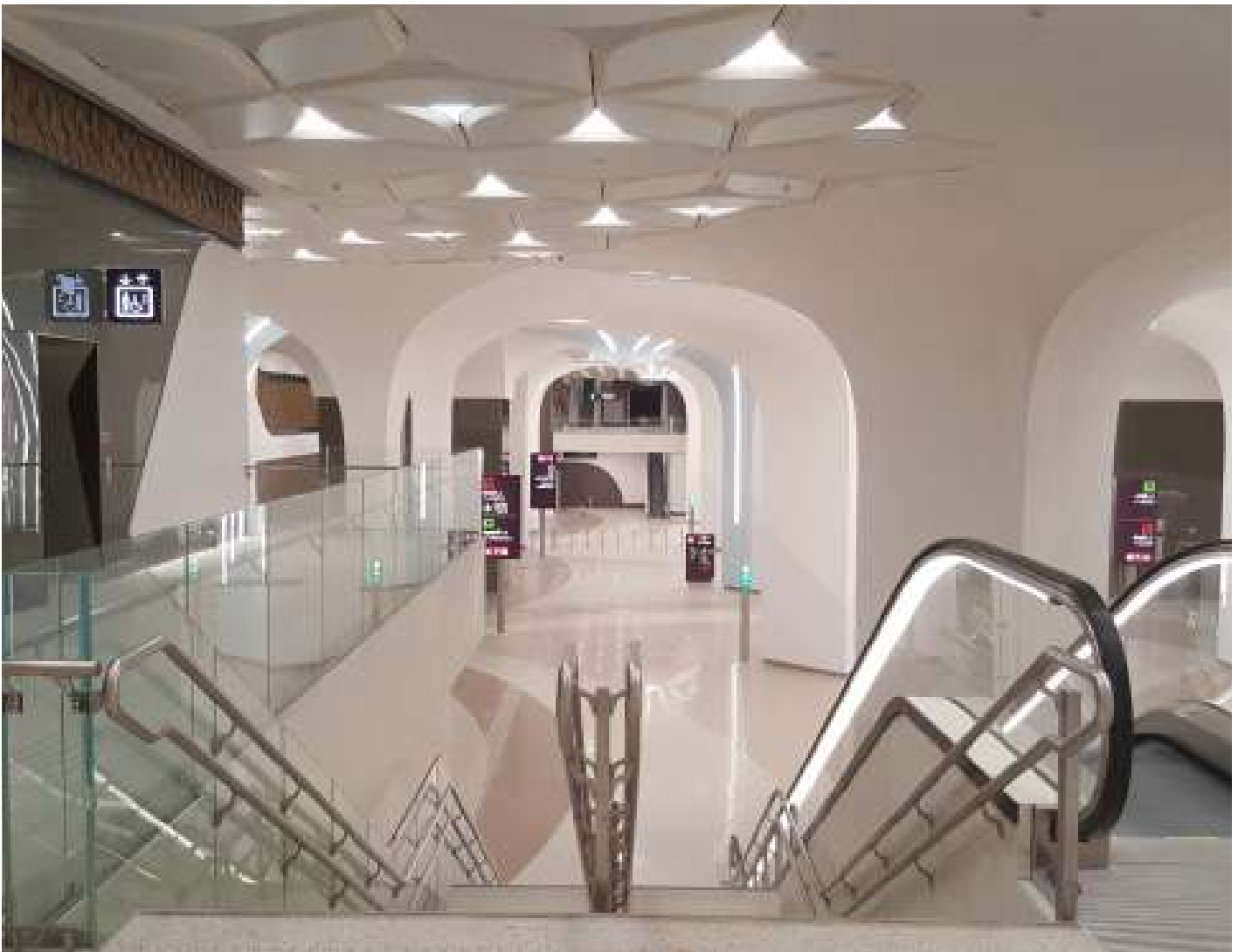
One Works together with CIO Team (COWI, Italferr & One Works) as consultant of the Design & Build Contractor ISG JV, is working to integrate the Corporate Architectural Branding vision selected by HH the Emir (design by UNstudio) for the Red Line North Metro Stations.

The design is pursuing the goals, which reflect Qatar Rail's mission. The first - establish a network identity recognizable in the urban surroundings that functions as a powerful Public Transportation Benefits Statement. Its instant recognition at busy road intersections will be a permanent reminder of the alternative to private transportation. The network's visibility results in immediate benefits on neighbouring properties appeal in virtue of entrance proximity.

Secondly, to create an excellent public transportation network with renown services for comfort and reliability, and encourage the use of public transportation as a valid and clean alternative to private transportation, reducing congestion and pollution.

**Location:** Doha, Qatar  
**Client:** ISG JV (Salini Impregilo, SK E&C, Galfar)  
**Services:** finishes design, landscape design, interface management, follow up and technical assistance during construction phase  
**With:** COWI and Italferr (CIO JV)







## DOHA METRO MAJOR STATION MSHEIREB

DELIVERY OF TWO MAJOR METRO STATIONS THROUGH HIGH LEVEL ARCHITECTURE, ADVANCED INSTALLATION TECHNIQUES AND UNIQUE INTERIORS THAT ADOPT THE FINEST QUALITY MATERIALS.



Following the experience had in Red line North Underground, One Works has been designated as Design Consultant by QR for detail design development of the 2 Major Stations of the whole Doha metro lines. Msheireb is the main station in Doha with the interchange of three lines, in the heart of the new developed area of Msheireb Properties masterplan.

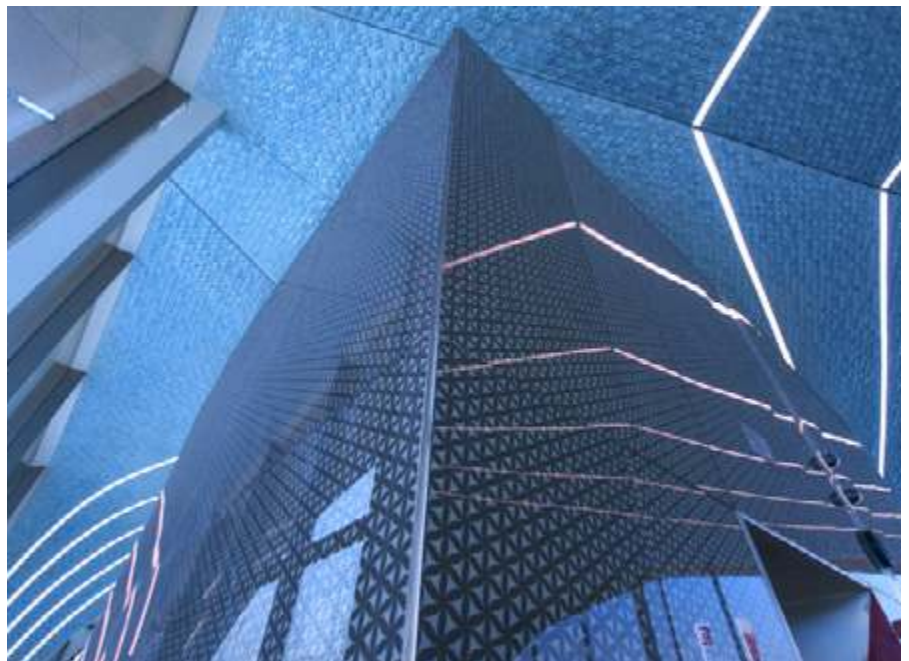
Education city is Green line station defined by large shelter and a reaching the new area of Education City and Qatar Foundation.

For both stations One Works has developed the internal detail design and fit out of all public areas with the purpose of optimize and rationalize the internal finishes, the details maintaining the Look and feel required by the Client.

**Location:** Doha, Qatar

**Client:** Qatar Rail

**Services:** design consultant for stations public areas architecture, interior design, landscape, design management







## DUBAI 2020 PAVILION ROOFTOP CAFE' AND EVENTS AREA

DESIGN PROPOSAL FOR ALGERIAN PAVILLION, A NEAT SIMPLIFIED REPRESENTATION OF THIS HUGE, VARIEGATED AND EXTREMELY FASCINATING COUNTRY.



A single 2 storeys building, telling about the communal identity, is punctuated by five iconic towers expressing specific features of the main five Algerian geographic areas through different regional referred decorative patterns, applied on the monochromatic brick cladding as well as on the colourful ceramic tiles in the pavilion entrances. The towers themselves recall traditional Algerian architectural elements and local natural elements: the evocative desert pinnacles. The building is intended like a single huge reddish earth block, with a vibrant pleated brick panels cladding, excavated in order to generate a white intimate, iridescent inner courtyard, characterized by clear glazed ceramic tiles.

**Location:** Dubai  
**Client:** Confidential  
**Services:** Architectural Design, Interior Design



## EXPO PAVILLION DUBAI 2020

### DESIGN PROPOSAL FOR THE COOPERATION COUNCIL FOR THE ARAB STATES OF THE GULF

The reflecting pool, in continuity with the main public path level, is cut by a huge stair merging seating steps and accessibility ramps, leading the visitors to a wide regular space located at the basement level.

This spatial solution, entailing an easy and quick direct access next to evocative waterfalls, will allow managing possible queuing directly inside the Pavilion. Already in a comfort zone, visitors will be engaged with contents, experiences and information since the very beginning of their journey.

Two elevators and a spectacular spiral stair give access to the upper levels of the Pavilion.

A series of office spaces, meeting rooms and ancillary spaces are located on the ground floor, together with a service entrance and a vip entrance. On the first floor an evocative concave room with six ogival arches generates a unique symbolic space facing a huge transparent façade overlooking the main entrance area.

Support spaces and a rooftop terrace are placed on the top of the Pavilion.

Date: 2018  
Location: Confidential  
Client: Confidential  
Services: Architectural Design





## EXPO PAVILLION DUBAI 2020

PROJECT THAT REFLECTS ON THE ITALIAN NATURALNESS THAT CAN BE CONSIDERED AS A UNIQUE EXAMPLE IN THE WORLD OF CULTURAL AND CREATIVE BIODIVERSITY, A LIVING LABORATORY FOR A SUSTAINABLE EVOLUTION OF SPECIES.

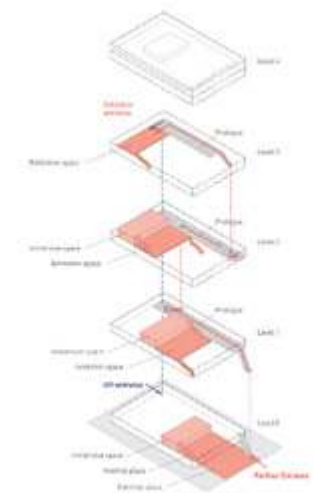
The wonders of the Italian landscape constitute the very shape of the pavilion, starting from its envelope: a large garden / landscape that can be crossed in which we encounter thematic stories and services in an immersive experience, while productive, inventive, cultural and technological activities make it up the framework, the internal structure, the schedule: a great scenic machine in constant motion.

The Italian Pavilion for Expo Dubai 2020 interprets the idea of the garden as a place of openness and exchange, aimed at telling a productive, active, open, progressive and pluralist Italy where nature and technology are continuously intertwined: our technology is founded on our relationship with the territory and our future.

In typological terms, the building has an unprecedented relationship between inside and outside, developed in particular in a large garden facade suitable for hosting the 'queuing' and introduction path, making the visitor immerse in an interesting and complex experience even before enter the Pavilion.

This external path leads the visitor on his ascension and sensorial journey towards the entrance of the pavilion, making him an active subject in the discovery of three different landscapes: the arid landscape and the Mediterranean maquis (level +1), the agricultural productive landscape (level +2) and the Forest (level +3).

**Date:** 2018  
**Location:** Confidential  
**Client:** Confidential  
**Services:** Architectural Design









## WEST BAY STATION OVERPASS DOHA, QATAR

ONE OF THE INTERVENTIONS INCLUDED IN THE DETAILED DESIGN OF 7 UNDERGROUND STATIONS IN DOHA, PART OF THE CITY'S URBAN AND SUBURBAN TRANSFORMATION

One Works developed the detailed design of the 7 underground Stations included in the Red Line North Underground section and the 2 Major Stations, Musheireb and Education City, all part of the Doha Metro System.

The station consists in one station box and related entrances, which in some cases are pedestrian underpass, in other cases overpasses, that link the concourse level to the public entrances located on the opposite side of the main streets.

Location: Doha, Qatar  
 Client: Qatar Rail  
 Services: Structural Engineering  
 N. of Entrances: 2  
 Total Length: 70m  
 Width: 10m







## TRANSPORT EDUCATION CENTRE

A NEW STATE-OF-THE-ART EDUCATION CENTRE FOR DOHA CELEBRATING THE PAST AND FUTURE OF TRANSPORTATION

As well as a source of education, the new centre will provide exhibition space and a recreational facility. The combination of these three major functions into one harmonious whole will embody the vision of Qatar Rail while enhancing the environmental factors and characteristics of the area, to represent the project's real innovative approach. The TEC is designed to create a direct relationship with citizens and visitors, making them a pro-active and vibrant component to the museum complex.

- Date:** 2017 - on going
- Location:** Doha, Qatar
- Client:** Qatar Rail
- Services:** Architectural Design and Engineering
- With:** CEG International









## AL KHOR STADIUM

THE PROJECT SCOPE OF WORK IS THE DESIGN, CONSTRUCTION, COMPLETION AND MAINTENANCE OF AL BAYT STADIUM AT AL KHOR CITY AND ENERGY CENTRE.

Al Bayt Stadium is located in Al Khor, a seaside city in the north of Qatar, approximately 40 kilometers from the capital Doha.

The Project Scope of Work is the Design, Construction, Completion and Maintenance of Al Bayt Stadium at Al Khor City and Energy Centre. The Aspire Zone Foundation, a stakeholder of the Supreme Committee for Delivery & Legacy In 2022, will deliver Al Bayt Stadium that has the capacity to host 60,000 spectators, and fulfills all FIFA requirements for hosting FIFA World Cup™ matches through to the semi-final round.

**Date:** 2016 - 2018

**Location:** Doha, Qatar

**Client:** Salini-Impregilo, Cimolai, Galfar, SBP

**Services:** Cast in situ concrete and precast concrete structural Workshop Drawings, Architectural Workshop Drawings, BIM Revit 3D model till LOD 500, Review for the Contractors, the structural packages, Structural design for all temporary bracing systems



## DOHA BUSINESS PARK

DESIGN OF A STATE-OF-THE-ART COMMERCIAL OFFICE BUSINESS PARK,  
AS PART OF WIDER MASTERPLAN PROJECT,

One Works has been appointed to design a state-of-the-art Business Park with a series of ancillary functions public oriented and intragrated into a wider masterplan project.

The intervention will combine the efficiency of the working & logistic spaces with other business, education, commerce and events sectors opened to the public. Great attention was given to the circulation and the buildings and the surrounding complex, as well as the sustainability features for the development project.

**Location:** Doha, Qatar  
**Client:** Confidential  
**Services:** Architectural Design, Masterplan, Landscape







# MAJOR PROJECTS LISTS



## Ongoing

(BKK) Suvarnabhumi International Airport, Bangkok - Construction Management for Phase 2 Expansion - ongoing

(DIA) Doha International Airport - Consultancy Services – Design of Airfield Delethalization Works - ongoing

(UTP) U-Tapao International Airport, Thailand - Overall PPP Lead (Technical/Commercial/Financial) for Airside/Landside Expansion Programme - ongoing

(RIX) Riga International Airport - Passenger Terminal Building extension - ongoing

(BLQ) Guglielmo Marconi International Airport, Bologna, Italy - AirBP Italia New Fuel farm, Urbanization Works. Final design - SAB Srl - ongoing

(BLQ) Guglielmo Marconi International Airport, Bologna, Italy - Apron extension phase 3. Preliminary and Final design - SAB Srl - ongoing

(VCE) Marco Polo Airport, Venice-Tessera, Italy - Upgrade and new layout of North Apron. Preliminary design - Save Spa - ongoing

(PMF) Parma Airport, Parma, Italy - Upgrading of the runway strip and service road. Final and Detail Design - SO.GE.A.P. Spa - ongoing

(BGY) Orio Al Serio International Airport, Bergamo, Italy - Passenger Terminal Extension arrival area, Site Supervision - SACBO Spa - ongoing

(BGY) Orio Al Serio International Airport, Bergamo, Italy - Ryanair New maintenance area, Preliminary design and Site Supervision - Ryanair - ongoing

(FCO) Fiumicino and Ciampino Airports, Rome, Italy - General contract for airside works - ADR Roma Spa - ongoing

## Completed

Chiang Mai Airport, Hat Yai Airport and Phuket Airport Duty Free Concession for Dufry Consortium, Thailand - Bid Coordination and Design - 2019

Suvarnabhumi International Airport, Duty Free Concession for Dufry Consortium, Thailand - Bid Coordination and Design - 2019

(VCE) Marco Polo Airport, Venice-Tessera, Italy - Passenger Terminal Building extension (Phase: TL1 (built), Piersud (construction); TL2A (design Submitted)) - Final and detail Design - SAVE engineering SpA - 2018

(AHB) Abha International Airport, Abha, Ksa - New Terminal Building, Airside Design, Preliminary and Final design - GACA/EDGE - ahmed abdulaziz zaidan consulting architects 2461 - 2018

(AHB) Abha International Airport, Abha, Ksa - Masterplan revision and design of the Airside structures (apron, taxiway). Schematic and detail design - GACA General Authority of Civil Aviation/Rafael Vinoly Architects JV - 2017

(BDS) Brindisi Airport, Brindisi, Italy - Airport Runway and apron Rehabilitation, new apron. Tender Detail Design - Imprese Orfeo Mazzitelli - 2017

(WRO) Wroclaw Airport, Poland - Ryanair New maintenance hangars Detail design and Site Supervision - Ryanair - 2017

(VCE) Marco Polo Airport, Venice-Tessera, Italy - Venice Airport Assessment of infrastructure for A380 operations, Consultancy - SAVE Spa - 2016

(BGY) Orio Al Serio International Airport, Bergamo, Italy - Runway RESA extension, Feasibility Study - SACBO Spa - 2016

(VRN) Villafranca Airport, Verona, Italy - Rehabilitation of terminal Building Preliminary design - Aeroporti del Garda - 2016

(NAP) Capodichino Airport, Napoli, Italy - Upgrade of Taxiway Nord, Hotel Bypass and service roads. Schematic design, detail and final design - GESAC - 2015

(MXP) Malpensa International Airport, Milan, Italy - Cargo City, Preliminary and detail design - SEA Aeroporti di Milano - 2015

(BZO) Aeroporto Bolzano Dolomiti, Italy - Runway drainage culvert, Risk Assessment - ABD Airport S.p.a. - 2015

(LIN) Milan Linate Airport, Italy - General Aviation Terminal restyling, Detail design - SEA Prime S.p.A. - 2015

(TRN) Turin Airport, Italy - Runway Risk Assessment (RESAs; De Icing bay and holding position), Risk Assessment - Sagat Torino - 2015

(VCE) Marco Polo Airport, Venice-Tessera, Italy - Vip lounge, Detail Design - SAVE Spa - 2015

(RUH) Riyadh Airport, Saudi Arabia - Airside Facilities Upgrade. Consultancy and technical assistance for Tender - Al Bawani general contractor - 2014

Al Bawani Kkia - Airside Facilities Upgrade, Consultancy and technical assistance for Tender - 2014

(ABT) Al Baha International Airport, Al Baha, Ksa - Masterplan revision and design of the Airside structures (apron, taxiway). Schematic and detail design - GACA General Authority of Civil Aviation/Rafael Vinoly Architects JV - 2014

(MXP) Malpensa International Airport, Milan, Italy - Support to maintenance works, Detail Design - SEA Aeroporti di Milano - 2014

(BLQ) Guglielmo Marconi International Airport, Bologna, Italy - Refurbishment of commercial areas, Detail design - Aeroporto Guglielmo Marconi di Bologna S.p.A. - 2014

(BLQ) Guglielmo Marconi International Airport, Bologna, Italy - Rehabilitation and extension of terminal Building, Preliminary, Final and detail design - Aeroporto Guglielmo Marconi di Bologna S.p.A. - 2014

(BLQ) Guglielmo Marconi International Airport, Bologna, Italy - Rehabilitation and extension of terminal Building, Site supervision - Aeroporto Guglielmo Marconi di Bologna S.p.A. - 2014

(EBA) Elba Isle Airport, Italy - New Terminal Building extension, Site Supervision - Alatoscana S.p.A. - 2014

(MXP) Malpensa International Airport T2, Milan, Italy - Commercial area, Detail design - SEA Aeroporti di Milano - 2014

(PSA) Galileo Galilei International Airport, Pisa, Italy - Passenger terminal Rehabilitation and extension East Area, Preliminary design - SAT Società Aeroporto Toscano Spa - 2014

(ABT) Al Baha International Airport, Al Baha, Ksa - New Terminal Building -Airside Design, Preliminary and Final design - GACA/EDGE - ahmed abdulaziz zaidan consulting architects 2461 - 2013

(VBS) Brescia Montichiari Airport, Italy - Runway Extension Preliminary design - Aeroporto Valerio Catullo di Verona Villafranca - 2013

(MXP) Malpensa International Airport, Milan, Italy - Ticket Office inside terminal Building, Detail design - SEA Aeroporti di Milano - 2013

(JAZ) Jazan international Airport, Saudi Arabia - New Terminal Building design, Final design - Structural works and layout - GACA/EDGE - ahmed abdulaziz zaidan consulting architects 2461 - 2012

(PMF) Parma Airport, Parma, Italy - RWY Strip West, Risk Assessment - SO.GE.A.P. spa - 2012

(BJV) Bodrum Airport , Turkish - Traffic Forecast 2011 - 2016 for Bodrum Airport in Turkey, Traffic Forecast, Specific Analysis - Mondial Milas Bodrum Airport International- 2012

(EBA) Elba Isle Airport, Italy - New Terminal Building extension, Detail design - Alatoscana S.p.A. - 2012

(GOA) Genova International Airport, Italy - Utilities and parking upgrade, Final design - Aeroporto di Genova SpA - 2012

(BGY) Orio Al Serio International Airport, Bergamo, Italy - Passenger Terminal Extension arrival area, Detail design - SACBO Spa - 2012

(BGY) Orio Al Serio International Airport, Bergamo, Italy - Passenger Terminal Extension 2011 - 2013, Preliminary design 2010 - SACBO Spa

(BGY) Orio Al Serio International Airport, Bergamo, Italy - Passenger Terminal Extension of departure Schengen and extra Schengen, Site supervision - SACBO Spa - 2011

(BGY) Orio Al Serio International Airport, Bergamo, Italy, Passenger Terminal Extension of departure Schengen and extra Schengen, Detail design - SACBO Spa - 2011







Madinah Airport, Saudi Arabia Terminal and ancillary building  
Tender support and due diligence - Salini Impregilo, Altabani  
General Contractor - 2011

Milan Malpensa and Linate Airport, Italy - Lot 7: fabbricati uffici  
D.G., VVF, GDF, C.C di Linate, Siesmic analysis and assessment -  
SEA Aeroporti di Milano - 2011

(PMF) Parma Airport, Parma, Italy - RWY Strip and service roads,  
Detail Design - SO.GE.A.P. spa - 2011

(PSA) Galileo Galilei International Airport, Pisa, Italy - Passenger  
terminal Rehabilitation West Area, Preliminary and detail design -  
SAT Società Aeroporto Toscano Spa - 2011

(BLQ) Guglielmo Marconi International Airport, Bologna, Italy -  
Terminal Building, Siesmic analysis and assessment - Aeroporto  
Guglielmo Marconi di Bologna S.p.A. - 2011

(GOA) Genova International Airport, Italy - Passenger terminal  
extensions, Preliminary and detail design - Aeroporto di Genova  
SpA - 2011

(GOA) Genova International Airport, Italy - Passenger terminal  
Siesmic analysis and assessment - Aeroporto di Genova SpA - 2010

Jeddah Airport, Saudi Arabia Terminal and ancillary building,  
Tender support and due diligence - Salini Impregilo, Altabani  
General Contractor - 2010

(BGY) Orio Al Serio International Airport, Bergamo, Italy, Runway  
Strip 10/28, Risk Assessment - SACBO Spa - 2010

(PNL) Pantelleria Airport, Pantelleria, Italy, Runway Extension,  
Detail design for tender - Impresa Maltauro S.p.A - 2010

(PMF) Parma Airport, Parma, Italy, RWY Strip, Risk Assessment -  
SO.GE.A.P. spa - 2010

(BLQ) Guglielmo Marconi International Airport, Bologna, Italy -  
Rehabilitation and extention of terminal Building, Preliminary,  
Final and detail design - Aeroporto Guglielmo Marconi di Bologna  
S.p.A. - 2010

(PSA) Galileo Galilei International Airport, Pisa, Italy, New Terminal  
Rent a Car, Preliminary, final, detail design and site supervision -  
SAT Società Aeroporto Toscano Spa - 2010

(PNL) Pantelleria Airport, Pantelleria, Italy - Extension of aprons,  
Final Design, Extension of Runway 08-26 and RESA, Tender Detail  
Design - Impresa Maltauro Spa - 2010

(MXP) Malpensa International Airport, Milan, Italy - Cargo City  
Urbanization Works. Final design - SEA Spa - 2010

(MXP) Malpensa International Airport, Milan, Italy - Cargo City  
Urbanization Works, Detail design - SEA Aeroporti di Milano - 2010

Rome Urbe Airport, Italy - New passenger terminal Building,  
Preliminary, final and detail design and site supervision - ENAC  
(Italian Civil Aviation Authority) - 2010

(RAN) Ravenna Airport, Italy - New Fence and fence extention,  
Detail design and site supervision - ENAC (Italian Civil Aviation  
Authority) - 2009

(REG) Tito Minniti Airport, Reggio Calabria, Italy, BHS system,  
Detail design and site supervision - Sogas SpA - 2009

(PSA) Galileo Galilei International Airport, Pisa, Italy - Runway strip  
Rehabilitation Final and Detail Design - SAT Società Aeroporto  
Toscano Spa - 2009

(PSA) Galileo Galilei International Airport, Pisa, Italy - Technical  
support and consultancy" - SAT Società Aeroporto Toscano Spa -  
2009

(PSA) Galileo Galilei International Airport, Pisa, Italy - Works  
necessary for the consolidation and pre-loading of the land, Detail  
Design - SAT Società Aeroporto Toscano Spa - 2009

(PSA) Galileo Galilei International Airport, Pisa, Italy - Edificio A,  
zona check-in Area: upgrade and extentions, Detail design - SAT  
Società Aeroporto Toscano Spa - 2008

(PSA) Galileo Galilei International Airport, Pisa, Italy, New Terminal  
Cargo village and related urbaization works, Preliminary and final  
design - SAT Società Aeroporto Toscano Spa - 2008

(PNL) Pantelleria Airport, Pantelleria, Italy - Apron Extension, Detail  
design - ENAC (Italian Civil Aviation Authority) - 2008

(FRL)Forli Airport, Forli, Italy - Upgrading of the airside  
infrastructures. Final Design - SEAF Spa - 2007

(REG) Tito Minniti Airport, Reggio Calabria, Italy - Upgrading of runway 15-33 and 11-29. Rehabilitation and upgrading of, runway pavements, runway strip, rainwater drainage, service roads and fence. Schematic design, Final, Detail design and site supervision - Sogas Spa - 2007

(REG) Tito Minniti Airport, Reggio Calabria, Italy - Lot 1 & Lot 2. Airside infrastructures: Apron extension, Taxiways, service roads and drainage network. Schematic design, Final and Detail design - Sogas Spa - 2007

(VCE) Marco Polo Airport, Venice-Tessera, Italy - New Fire Brigade building complex (RFF, RFF and Financial Police), Preliminary, final and detail design - SAVE engineering SpA - 2007

(VCE) Marco Polo Airport, Venice-Tessera, Italy - Upgrading of the air side infrastructures, strips and RESA. Final and Detail Design - Save Spa - 2007

(FRL) Forti Airport, Forlì, Italy - Air-Side Infrastructure upgrade Detail Design and site supervision - Seaf SpA - 2007

(BGY) Orio Al Serio International Airport, Bergamo, Italy - Passenger Terminal Extension of departure lounge, Detail design - SACBO Spa - 2007

(REG) Tito Minniti Airport, Reggio Calabria, Italy - Passenger terminal extension phase 2, Preliminary and Detail design - Sogas SpA - 2007

(VCE) Marco Polo Airport, Venice-Tessera, Italy - Upgrading of the air side infrastructures, strips and RESA. Final and Detail Design - SAVE engineering SpA - 2006

(BZO) Aeroporto Bolzano Dolomiti, Italy - Maintenance Hangar, Feasability Study - ABD Airport S.p.a. - 2006

(REG) Tito Minniti Airport, Reggio Calabria, Italy - Air-Side infrastructure upgrade Phase 2, Final and detail design - Sogas SpA - 2006

(PSA) Galileo Galilei International Airport, Pisa, Italy - RWY 04R/22L Strip and RESA Rehabilitation, Detail design - SAT Società Aeroporto Toscano Spa - 2006

(PSA) Galileo Galilei International Airport, Pisa, Italy - Check-in Area Functional and capacity works, Detail design - SAT Società Aeroporto Toscano Spa - 2006

(REG) Tito Minniti Airport, Reggio Calabria, Italy - Air-Side infrastructure upgrade Phase, Final and detail design - Sogas SpA - 2006

(REG) Tito Minniti Airport, Reggio Calabria, Italy - Air-Side infrastructure upgrade Phase 1 and 2, Preliminary design - Sogas SpA - 2006

(REG) Tito Minniti Airport, Reggio Calabria, Italy - GSE Building Preliminary, final and detail design - Sogas SpA - 2006

(REG) Tito Minniti Airport, Reggio Calabria, Italy - Sogas SpA - Runway 15-33 rehabilitation works: Pavement, drainage and strip, Preliminary, final and detail design and site supervision - Sogas SpA - 2006

(VCE) Marco Polo Airport, Venice-Tessera, Italy, Passenger Terminal Building extension (phase: TL1, Piersud; TL2A e TL2B), Preliminary Design - SAVE engineering SpA - 2005

(REG) Tito Minniti Airport, Reggio Calabria, Italy, Runway 11-29: Strip Rehabilitation, pavement works and drainage works, Preliminary, Final and Detail design - Sogas SpA - 2005

(EBA) Elba Isle Airport, Italy - New Terminal Building, Detail Design - AerElba S.p.A. - 2005

(PMO) Palermo Airport, Italy - Aeroporto di Palermo, Runway and Taxiway rehabilitation works, Preliminary Works - GESAP S.p.A. - 2003

(PSA) Galileo Galilei International Airport, Pisa, Italy - Realization of the temporary system for sorting and control of hold baggage in the passenger terminal - SAT Società Aeroporto Toscano Spa - 2001

## WHY WORK WITH US:

74



### Global Network

We have worked on a range of infrastructure projects across Europe, Middle-East and the Asia-Pacific, including Venice International Airport, Malpensa Airport Masterplan, Riga Airport and Airport Extension, Riyadh Metro, Chennai Metro and U-Tapao International Airport Masterplan. Our record of delivery is second to none.



### A Full Service Package

We help clients through a full range of services - from masterplanning and concept design to detailed architectural, engineering design and site supervision. We also provide a full suite of services to support contractors including D&B support, BIM Management and Tender Support.



### Multidisciplinary Expertise

As a multi-sector design and consultancy firm, we can advise you on adjacent infrastructure needs and support the development of infrastructure assets as part of wider development masterplan.



### Sustainability Benefits

We realise and fully understand the business benefits of delivering sustainable solutions. From demand forecasting and risk management to climate resilience and carbon management, we know how to make your assets fit for the long term.



### Strong Reputation

Our experts have a strong background of developing long-lasting relationships with organisations across the industry. Our deep understanding of operational procedures and flow management, means we can help you to realise efficiencies to increase capacity, adopt new technologies and prolong the life of your assets.



### Ready for Innovation

We work with suppliers at the forefront of developments in the transport sector, from biometrics and security measures to new sustainable vehicles and systems. We can help you to navigate the opportunities and risks to the airport business model created by technological and behavioural change.



### We Create Value

Our experience aviation and infrastructure teams can bring added value to your business by gathering, making sense of and manipulating big data to enable better use of capital and operational investment and improve user experience for travellers and staff.





# ONEWORKS:

[one-works.com](https://one-works.com)

**Milan (Head Office)**

t +39 02 6559131

[milan@one-works.com](mailto:milan@one-works.com)

**Dubai (OW DMCC)**

t +971 4 4534805

[dubai@one-works.com](mailto:dubai@one-works.com)

**London**

t +44 (0) 20763 77255

[london@one-works.com](mailto:london@one-works.com)

**Bangkok**

t +66 271 827 859

[bangkok@one-works.com](mailto:bangkok@one-works.com)

**Singapore**

t +65 6828 1024

[singapore@one-works.com](mailto:singapore@one-works.com)

**Venice**

t +39 041 50967.00

[venice@one-works.com](mailto:venice@one-works.com)

**Rome**

t +39 06 77800001

[rome@one-works.com](mailto:rome@one-works.com)